

## DOMSTAL BABY

---

### 1. Generic Name

Domperidone oral Drops.

### 2. Qualitative and quantitative Composition:

Each ml contains:

Domperidone I.P. 10 mg

Flavoured Syrupy base q.s.

Colour: Ponceau 4R

OTHER INACTIVE INGREDIENTS ARE POLYSORBATE 80, METHYL PARABEN, PROPYL PARABEN, SUCROSE, SORBITOL SOLN.(NON.CRY), PROPYLENE GLYCOL, GLYCERIN, XANTHAN GUM, PONCEAU , CITRIC ACID MONO. HYD. , SODIUM CITRATE, ESSENCE ICECREAM SODA, STRAW BERRY FLAVOUR (LIQUID), CITRIC ACID MONO. HYD.

### 3. Dosage form and strength

Domperidone oral Drops is available in 5 ml bottle pack.

### 4. Clinical particulars

#### 4.1 Therapeutic indication

Indicated for treatment of gastric motility disorder etc.

#### 4.2 Posology and method of administration

Domperidone should be used at the lowest effective dose for the shortest duration necessary to control nausea and vomiting.

It is recommended to take oral domperidone before meals. If taken after meals, absorption of the drug is somewhat delayed.

Patients should try to take each dose at the scheduled time. If a scheduled dose is missed, the missed dose should be omitted and the usual dosing schedule resumed. The dose should not be doubled to make up for a missed dose.

Usually, the maximum treatment duration should not exceed one week.

#### Adults and adolescents (12 years of age and older and weighing 35 kg or more)

10 ml (of oral suspension containing domperidone 1mg per ml) up to three times per day with a maximum daily dose of 30 ml per day.

Oral domperidone should be taken before meals/feeding. If taken after meals absorption of the drug is somewhat delayed.

#### Hepatic Impairment

Domperidone is contraindicated in moderate or severe hepatic impairment (see section 4.3).

Dose modification in mild hepatic impairment is however not needed (see section 5.2).

### Renal Impairment

Since the elimination half-life of domperidone is prolonged in severe renal impairment, on repeated administration, the dosing frequency of domperidone should be reduced to once or twice daily depending on the severity of the impairment, and the dose may need to be reduced. Such patients on prolonged therapy should be reviewed regularly (see sections 4.4 and 5.2)

### Paediatric population

The efficacy of domperidone in children less than 12 years of age has not been established (see section 5.1).

The efficacy of domperidone in adolescents 12 years of age and older and weighing less than 35 kg has not been established.

Adults and adolescents 12 years of age and above

## **4.3 Contraindications**

Domperidone is contraindicated in the following situations:

- Known hypersensitivity to domperidone or any of the excipients
- Prolactin-releasing pituitary tumour (prolactinoma).
- when stimulation of the gastric motility could be harmful, e.g. in patients with gastro-intestinal haemorrhage, mechanical obstruction or perforation.
- in patients with moderate or severe hepatic impairment (see section 5.2).
- in patients who have known existing prolongation of cardiac conduction intervals, particularly QTc, patients with significant electrolyte disturbances or underlying cardiac diseases such as congestive heart failure (see section 4.4)
- co-administration with QT-prolonging drugs, at the exception of apomorphine (see sections 4.4 and 4.5)
- co-administration with potent CYP3A4 inhibitors (regardless of their QT prolonging effects) (see section 4.5)

## **4.4 Special warnings and precautions for use**

### Cardiovascular effects

Domperidone has been associated with prolongation of the QT interval on the electrocardiogram. During post-marketing surveillance, there have been very rare cases of QT prolongation and torsades de pointes in patients taking domperidone. These reports included patients with confounding risk factors, electrolyte abnormalities and concomitant treatment which may have been contributing factors (see section 4.8).

Epidemiological studies showed that domperidone was associated with an increased risk of serious ventricular arrhythmias or sudden cardiac death (see section 4.8). A higher risk was observed in patients older than 60 years, patients taking daily doses greater than 30 mg, and patients concurrently taking QT-prolonging drugs or CYP3A4 inhibitors.

Domperidone should be used at the lowest effective dose in adults and adolescents 12 years of age and older.

Domperidone is contraindicated in patients with known existing prolongation of cardiac conduction intervals, particularly QTc, in patients with significant electrolyte disturbances (hypokalaemia, hyperkalaemia, hypomagnesaemia), or bradycardia, or in patients with underlying

cardiac diseases such as congestive heart failure due to increased risk of ventricular arrhythmia (see section 4.3.). Electrolyte disturbances (hypokalaemia, hyperkalaemia, hypomagnesaemia) or bradycardia are known to be conditions increasing the proarrhythmic risk.

Treatment with domperidone should be stopped if signs or symptoms occur that may be associated with cardiac arrhythmia, and the patients should consult their physician.

Patients should be advised to promptly report any cardiac symptoms.

#### Use with apomorphine

Domperidone is contra-indicated with QT prolonging drugs including apomorphine, unless the benefit of the co-administration with apomorphine outweighs the risks, and only if the recommended precautions for co-administration mentioned in the apomorphine SmPC are strictly fulfilled. Please refer to the apomorphine SmPC.

#### Renal impairment

The elimination half-life of domperidone is prolonged in severe renal impairment. For repeated administration, the dosing frequency of domperidone should be reduced to once or twice daily depending on the severity of the impairment, and the dose may need to be reduced. Such patients on prolonged therapy should be reviewed regularly (see section 5.2).

#### **Domperidone Oral Solution contains sorbitol, propylhydroxybenzoate (E216) and methylhydroxybenzoate (E218)**

- Each 5 ml contains 2.275 g of sorbitol (E420). Patients with hereditary problems of fructose intolerance (HFI) should not take this medicine.
- Each 5 ml contains 9.000 mg of propylhydroxybenzoate (E216) which may cause allergic reactions (possibly delayed).
- Each 5 ml contains 1.000 mg of methylhydroxybenzoate (E218) which may cause allergic reactions (possibly delayed).

#### **4.5 Drugs interactions**

Antacids or antisecretory agents should not be taken simultaneously with oral formulations of domperidone as they lower the oral bioavailability of domperidone. Domperidone should be taken before meals and antacids or antisecretory agents after meals.

The main metabolic pathway of domperidone is through CYP3A4. *In vitro* data suggest that the concomitant use of drugs that significantly inhibit this enzyme may result in increased plasma levels of domperidone.

Increased risk of occurrence of QT-interval prolongation, due to pharmacodynamic and/or pharmacokinetic interactions.

Concomitant use of the following substances is contraindicated

QTc prolonging medicinal products

- anti-arrhythmics class IA (e.g., disopyramide, hydroquinidine, quinidine)
- anti-arrhythmics class III (e.g., amiodarone, dofetilide, dronedarone, ibutilide, sotalol)
- certain anti-psychotics (e.g., haloperidol, pimozone, sertindole)
- certain anti-depressants (e.g., citalopram, escitalopram)
- certain antibiotics (e.g., erythromycin, levofloxacin, moxifloxacin, spiramycin)
- certain antifungal agents (e.g., pentamidine)
- certain antimalarial agents (in particular halofantrine, lumefantrine)
- certain gastro-intestinal medicines (e.g., cisapride, dolasetron, prucalopride)
- certain antihistaminics (e.g., mequitazine, mizolastine)
- certain medicines used in cancer (e.g., toremifene, vandetanib, vincamine)
- certain other medicines (e.g., bepridil, diphemanil, methadone) (see section 4.3).
- apomorphine, unless the benefit of the co-administration outweighs the risks, and only if the recommended precautions for co-administration are strictly fulfilled. Please refer to the apomorphine SmPC.

Potent CYP3A4 inhibitors (regardless of their QT prolonging effects), i.e.:

- protease inhibitors
- systemic azole antifungals
- some macrolides (erythromycin, clarithromycin, telithromycin) (see section 4.3).

Concomitant use of the following substances is not recommended

Moderate CYP3A4 inhibitors i.e. diltiazem, verapamil and some macrolides.

(see section 4.3)

Concomitant use of the following substances requires caution in use

Caution with bradycardia and hypokalaemia-inducing drugs, as well as with the following macrolides involved in QT-interval prolongation: azithromycin and roxithromycin (clarithromycin is contra-indicated as it is a potent CYP3A4 inhibitor).

The above list of substances is representative and not exhaustive.

Separate *in vivo pharmacokinetic/pharmacodynamic* interaction studies with oral ketoconazole or oral erythromycin in healthy subjects confirmed a marked inhibition of domperidone's CYP3A4 mediated first pass metabolism by these drugs.

With the combination of oral domperidone 10mg four times daily and ketoconazole 200mg twice daily, a mean QTc prolongation of 9.8 msec was seen over the observation period, with changes at individual time points ranging from 1.2 to 17.5 msec. With the combination of domperidone 10mg four times daily and oral erythromycin 500mg three times daily, mean QTc over the observation period was prolonged by 9.9 msec, with changes at individual time points ranging from 1.6 to 14.3 msec. Both the Cmax and AUC of domperidone at steady state were increased approximately three-fold in each of these interaction studies. In these studies domperidone monotherapy at 10mg given orally four times daily resulted in increases in mean QTc of 1.6 msec (ketoconazole study) and 2.5 msec (erythromycin study), while ketoconazole monotherapy (200mg twice daily) led to increases in QTc of 3.8 and 4.9 msec, respectively, over the observation period.

#### **4.6 Use in special populations (such as pregnant women, lactating women, paediatric patients, geriatric patients etc.)**

##### Pregnancy

There are limited post-marketing data on the use of domperidone in pregnant women. Studies in animals have shown reproductive toxicity at maternally toxic doses (see section 5.3). Domperidone should only be used during pregnancy when justified by the anticipated therapeutic benefit.

##### Breast-feeding

Domperidone is excreted in human milk and breast-fed infants receive less than 0.1 % of the maternal weight-adjusted dose. Occurrence of adverse effects, in particular cardiac effects cannot be excluded after exposure via breast milk. A decision should be made whether to discontinue breast-feeding or to discontinue/abstain from domperidone therapy taking into account the benefit of breast feeding for the child and the benefit of therapy for the woman. Caution should be exercised in case of QTc prolongation risk factors in breast-fed infants.

#### **4.7 Effects on ability to drive and use machines**

Domperidone has no or negligible influence on the ability to drive and use machines.

#### **4.8 Undesirable effects**

##### Tabulated list of adverse reactions

The safety of domperidone was evaluated in clinical trials and in postmarketing experience. The clinical trials included 1275 patients with dyspepsia, gastro-oesophageal reflux disorder (GORD), Irritable Bowel Syndrome (IBS), nausea and vomiting or other related conditions in 31 double-blind, placebo-controlled studies. All patients were at least 15 years old and received at least one dose of domperidone (domperidone base). The median total daily dose was 30 mg (range 10 to 80 mg), and median duration of exposure was 28 days (range 1 to 28 days). Studies in diabetic gastroparesis or symptoms secondary to chemotherapy or parkinsonism were excluded.

The following terms and frequencies are applied:

very common ( $\geq 1/10$ ); common ( $\geq 1/100$  to  $< 1/10$ ); uncommon ( $\geq 1/1,000$  to  $< 1/100$ ); rare ( $\geq 1/10,000$  to  $< 1/1,000$ ); very rare ( $< 1/10,000$ ), Where frequency can not be estimated from clinical trials data, it is recorded as “Not known”.

very common ( $\geq 1/10$ ); common ( $\geq 1/100$  to  $< 1/10$ ); uncommon ( $\geq 1/1,000$  to  $< 1/100$ ); rare ( $\geq 1/10,000$  to  $< 1/1,000$ ); very rare ( $< 1/10,000$ ), Where frequency can not be estimated from clinical trials data, it is recorded as “Not known”.

System Organ Class	Adverse Drug Reaction		
	Frequency		
	Common	Uncommon	Not known
<b>Immune system disorders</b>			Anaphylactic reaction (including anaphylactic shock)
<b>Psychiatric disorders</b>		Loss of libido Anxiety	Agitation Nervousness
<b>Nervous system disorders</b>		Somnolence Headache	Convulsion Extrapyramidal disorder
<b>Eye disorders</b>			Oculogyric crisis
<b>Cardiac disorders (see section 4.4)</b>			Ventricular arrhythmias Sudden cardiac death QTc prolongation Torsade de Pointes
<b>Gastrointestinal disorders</b>	Dry mouth	Diarrhoea	
<b>Skin and subcutaneous tissue disorder</b>		Rash Pruritus	Urticaria Angioedema
<b>Renal and urinary disorders</b>			Urinary retention
<b>Reproductive system and breast disorders</b>		Galactorrhoea Breast pain Breast tenderness	Gynaecomastia Amenorrhoea
<b>General disorders and administration site conditions</b>		Asthenia	
<b>Investigations</b>			Liver function test abnormal Blood prolactin increased

In 45 studies where domperidone was used at higher dosages, for longer duration and for additional indications including diabetic gastroparesis, the frequency of adverse events (apart from dry mouth) was considerably higher. This was particularly evident for pharmacologically predictable events related to increased prolactin. In addition to the reactions listed above, akathisia, breast discharge, breast enlargement, breast swelling, depression, hypersensitivity, lactation disorder, and irregular menstruation were also noted.

### **Description of adverse reactions**

Torrent Pharma available at:  
[http://www.torrentpharma.com/index.php/site/info/adverse\\_event\\_reporting](http://www.torrentpharma.com/index.php/site/info/adverse_event_reporting).

By reporting side effects, you can help provide more information on the safety of this medicine.

## **4.9 Overdose**

### Symptoms

Symptoms of over dosage may include agitation, altered consciousness, convulsions, disorientation, somnolence and extrapyramidal reactions.

### Treatment

There is no specific antidote to domperidone, but in the event of overdose, standard symptomatic treatment should be given immediately. Gastric lavage as well as the administration of activated charcoal, may be useful. ECG monitoring should be undertaken, because of the possibility of QT interval prolongation. Close medical supervision and supportive therapy is recommended.

Anticholinergic, anti-parkinson drugs may be helpful in controlling the extrapyramidal reactions.

## **5 Pharmacological properties**

### **5.1 Mechanism of Action**

Domperidone is a dopamine antagonist with anti-emetic properties, Domperidone does not readily cross the blood-brain barrier. In domperidone users, especially in adults, extrapyramidal side effects are very rare, but domperidone promotes the release of prolactin from the pituitary. Its anti-emetic effect may be due to a combination of peripheral (gastrokinetic) effects and antagonism of dopamine receptors in the chemoreceptor trigger zone, which lies outside the blood-brain barrier in the area postrema. Animal studies, together with the low concentrations found in the brain, indicate a predominantly peripheral effect of domperidone on dopamine receptors.

Studies in man have shown oral domperidone to increase lower oesophageal pressure, improve antroduodenal motility and accelerate gastric emptying. There is no effect on gastric secretion. In accordance with ICH—E14 guidelines, a thorough QT study was performed. This study included a placebo, an active comparator and a positive control and was conducted in healthy subjects with up to 80 mg per day 10 or 20 mg administered 4 times a day of domperidone. This study found a maximal difference of QTc between domperidone and placebo in LS-means in the change from baseline of 3.4 msec for 20 mg domperidone administered 4 times a day on Day 4. The 2-sided 90 % CI (1.0 to 5.9 msec) did not exceed 10 msec. No clinically relevant QTc effects were observed in this study when domperidone was administered at up to 80 mg/day (i.e., more than twice the maximum recommended dosing).

However, two previous drug-drug interaction studies showed some evidence of QTc prolongation when domperidone was administered as monotherapy (10 mg 4 times a day). The largest time-matched mean difference of QTcF between domperidone and placebo was 5.4 msec (95 % CI: -1.7 to 12.4) and 7.5 msec (95 % CI: 0.6 to 14.4), respectively.

#### Clinical study in infants and children 12 years of age and younger

A multicentre, double-blinded, randomised, placebo-controlled, parallel-group, prospective study was conducted to evaluate the safety and efficacy of domperidone in 292 children with acute gastroenteritis aged 6 months to 12 years (median age 7 years). In addition to oral rehydration treatment (ORT), randomised subjects received domperidone oral suspension at 0.25 mg/kg (up to a maximum of 30 mg domperidone/day), or placebo, 3 times a day, for up to 7 days. This study did not achieve the primary objective, which was to demonstrate that domperidone suspension plus ORT is more effective than placebo plus ORT at reducing vomiting episode during the first 48 hours after the first treatment administration (see section 4.2).

## **5.2 Pharmacokinetic properties**

### Absorption

Domperidone is rapidly absorbed after oral administration, with peak plasma concentrations occurring at approximately 1 hr after dosing. The C<sub>max</sub> and AUC values of domperidone increased proportionally with dose in the 10 mg to 20 mg dose range. A 2- to 3-fold accumulation of domperidone AUC was observed with repeated four times daily (every 5 hr) dosing of domperidone for 4 days.

The low absolute bioavailability of oral domperidone (approximately 15%) is due to an extensive first-pass metabolism in the gut wall and liver. Although domperidone's bioavailability is enhanced in normal subjects when taken after a meal, patients with gastro-intestinal complaints should take domperidone 15-30 minutes before a meal. Reduced gastric acidity impairs the absorption of domperidone. Oral bioavailability is decreased by prior concomitant administration of cimetidine and sodium bicarbonate. The time of peak absorption is slightly delayed and the AUC somewhat increased when the oral drug is taken after a meal.

### Distribution

Oral domperidone does not appear to accumulate or induce its own metabolism; a peak plasma level after 90 minutes of 21 ng/ml after two weeks oral administration of 30 mg per day was almost the same as that of 18 ng/ml after the first dose. Domperidone is 91-93% bound to plasma proteins. Distribution studies with radiolabelled drug in animals have shown wide tissue distribution, but low brain concentration. Small amounts of drug cross the placenta in rats.

### Biotransformation

Domperidone undergoes rapid and extensive hepatic metabolism by hydroxylation and N-dealkylation. *In vitro* metabolism experiments with diagnostic inhibitors revealed that CYP3A4 is a major form of cytochrome P-450 involved in the N-dealkylation of domperidone, whereas CYP3A4, CYP1A2 and CYP2E1 are involved in domperidone aromatic hydroxylation.



## Excretion

Urinary and faecal excretions amount to 31 and 66% of the oral dose respectively. The proportion of the drug excreted unchanged is small (10% of faecal excretion and approximately 1% of urinary excretion). The plasma half-life after a single oral dose is 7-9 hours in healthy subjects but is prolonged in patients with severe renal insufficiency.

## Hepatic impairment

In subjects with moderate hepatic impairment (Pugh score 7 to 9, Child-Pugh rating B), the AUC and  $C_{max}$  of domperidone is 2.9- and 1.5-fold higher, respectively, than in healthy subjects. The unbound fraction is increased by 25%, and the terminal elimination half-life is prolonged from 15 to 23 hours. Subjects with mild hepatic impairment have a somewhat lower systemic exposure than healthy subjects based on  $C_{max}$  and AUC, with no change in protein binding or terminal half-life. Subjects with severe hepatic impairment were not studied. Domperidone is contraindicated in patients with moderate or severe hepatic impairment (see section 4.3).

## Renal impairment

In subjects with severe renal insufficiency (creatinine clearance  $<30\text{ml/min/1.73m}^2$ ) the elimination half-life of domperidone is increased from 7.4 to 20.8 hours, but plasma drug levels are lower than in healthy volunteers. Since very little unchanged drug (approximately 1%) is excreted *via* the kidneys, it is unlikely that the dose of a single administration needs to be adjusted in patients with renal insufficiency.

However, on repeated administration, the dosing frequency should be reduced to once or twice daily depending on the severity of the impairment, and the dose may need to be reduced.

## Paediatric population

No pharmacokinetic data are available in the paediatric population..

## **6 Nonclinical properties**

Electrophysiological *in vitro* and *in vivo* studies indicate an overall moderate risk of domperidone to prolong the QT interval in humans. In *in vitro* experiments on isolated cells transfected with hERG and on isolated guinea pig myocytes, exposure ratios ranged between 26- 47-fold, based on IC50 values inhibiting currents through IKr ion channels in comparison to the free plasma concentrations in humans after administration of the maximum daily dose of 10 mg administered 3 times a day. Safety margins for prolongation of action potential duration in *in vitro* experiments on isolated cardiac tissues exceeded the free plasma concentrations in humans at maximum daily dose (10 mg administered 3 times a day) by 45-fold. Safety margins in *in vitro* pro-arrhythmic models (isolated Langendorff perfused heart) exceeded the free plasma concentrations in humans at maximum daily dose (10 mg administered 3 times a day) by 9- up to 45-fold. In *in vivo* models the no effect levels for QTc prolongation in dogs and induction of arrhythmias in a rabbit model sensitized for torsade de pointes exceeded the free plasma concentrations in humans at maximum daily dose (10 mg administered 3 times a day) by more than 22-fold and 435-fold, respectively. In the anesthetized guinea pig model following slow intravenous infusions, there were no effects on QTc at total plasma concentrations of 45.4 ng/mL, which are 3-fold higher than the total plasma

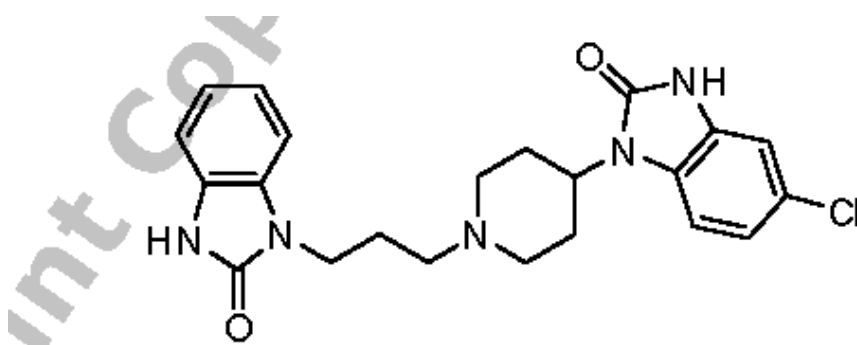
levels in humans at maximum daily dose (10 mg administered 3 times a day). The relevance of the latter study for humans following exposure to orally administered domperidone is uncertain.

In the presence of inhibition of the metabolism via CYP3A4 free plasma concentrations of domperidone can rise up to 3-fold.

At a high, maternally toxic dose (more than 40 times the recommended human dose), teratogenic effects were seen in the rat. No teratogenicity was observed in mice and rabbits.

## 7 Description

Domperidone is 5-chloro-1-[1-[3-(2-oxo-2,3-dihydro-1H-benzimidazol-1-yl)propyl]piperidin-4-yl]-1,3-dihydro-2H-benzimidazol-2-one. Having molecular weight 425.9 and its empirical formula is C<sub>22</sub>H<sub>24</sub>ClN<sub>5</sub>O<sub>2</sub>. The structural formula is:



Domperidone is a white or almost white powder. Soluble in dimethylformamide, slightly soluble in ethanol(95 percent) and in methanol; practically insoluble in water.

### Product Description:

Domstal baby is Pink coloured pleasantly flavoured viscous suspension. Other inactive ingredients are POLYSORBATE 80, METHYL PARABEN, PROPYL PARABEN, SUCROSE, SORBITOL SOLN.(NON.CRY), PROPYLENE GLYCOL, GLYCERIN, XANTHAN GUM, PONCEAU , CITRIC ACID MONO. HYD. , SODIUM CITRATE, ESSENCE ICECREAM SODA, STRAW BERRY FLAVOUR (LIQUID), CITRIC ACID MONO. HYD.

## 8 Pharmaceutical particulars

### 8.1 Incompatibilities

Not applicable

### 8.2 Shelf-life

Do not use later than date of expiry.

### 8.3 Packaging information

Domstal Baby is available in 5 ml bottle pack.

### 8.4 Storage and handing instructions

STORE AT A TEMPERATURE NOT EXCEEDING 30°C, PROTECTED FROM LIGHT.

## 9 Patient Counselling Information

### DOMSTAL BABY

Domperidone oral Drops.

Read all of this leaflet carefully before you start taking this medicine because it contains important information for you.

- Keep this leaflet. You may need to read it again.
- If you have any further questions, ask your doctor or your pharmacist.
- This medicine has been prescribed for you only. Do not pass it on to others. It may harm them, even if their signs of illness are the same as yours.
- If you get any side effects, talk to your doctor or pharmacist. This includes any possible side effects not listed in this leaflet.

#### What is in this leaflet

##### What is in this leaflet?

- 9.1. What DOMSTAL BABY oral Drops are and what they are used for
- 9.2. What you need to know before you take DOMSTAL BABY oral Drops
- 9.3. How to take DOMSTAL BABY oral Drops
- 9.4. Possible side effects
- 9.5. How to store DOMSTAL BABY oral Drops
- 9.6. Contents of the pack and other information

#### 9.1 What DOMSTAL BABY is and what it is used for

DOMSTAL BABY oral Drops Contains Domperidone I.P. 10 mg Flavoured Syrupy base q.s. Colour: Ponceau 4R

DOMSTAL BABY oral drops Indicated for treatment of gastric motility disorder etc.

#### 9.2 What you need to know before you take DOMSTAL BABY oral Drops

##### Do not take DOMSTAL BABY oral Drops if

- Known hypersensitivity to domperidone or any of the excipients
- Prolactin-releasing pituitary tumour (prolactinoma).
- when stimulation of the gastric motility could be harmful, e.g. in patients with gastro-intestinal haemorrhage, mechanical obstruction or perforation.
- in patients with moderate or severe hepatic impairment (see section 5.2).
- in patients who have known existing prolongation of cardiac conduction intervals, particularly QTc, patients with significant electrolyte disturbances or underlying cardiac diseases such as congestive heart failure (see section 4.4)
- co-administration with QT-prolonging drugs, at the exception of apomorphine (see sections 4.4 and 4.5)
- co-administration with potent CYP3A4 inhibitors (regardless of their QT prolonging effects) (see section 4.5)

#### Warnings and precautions

##### Cardiovascular effects

Domperidone has been associated with prolongation of the QT interval on the electrocardiogram. During post-marketing surveillance, there have been very rare cases of QT prolongation and torsades de pointes in patients taking domperidone. These reports

included patients with confounding risk factors, electrolyte abnormalities and concomitant treatment which may have been contributing factors (see section 4.8).

Epidemiological studies showed that domperidone was associated with an increased risk of serious ventricular arrhythmias or sudden cardiac death (see section 4.8). A higher risk was observed in patients older than 60 years, patients taking daily doses greater than 30 mg, and patients concurrently taking QT-prolonging drugs or CYP3A4 inhibitors.

Domperidone should be used at the lowest effective dose in adults and adolescents 12 years of age and older.

Domperidone is contraindicated in patients with known existing prolongation of cardiac conduction intervals, particularly QTc, in patients with significant electrolyte disturbances (hypokalaemia, hyperkalaemia, hypomagnesaemia), or bradycardia, or in patients with underlying cardiac diseases such as congestive heart failure due to increased risk of ventricular arrhythmia (see section 4.3.). Electrolyte disturbances (hypokalaemia, hyperkalaemia, hypomagnesaemia) or bradycardia are known to be conditions increasing the proarrhythmic risk.

Treatment with domperidone should be stopped if signs or symptoms occur that may be associated with cardiac arrhythmia, and the patients should consult their physician.

Patients should be advised to promptly report any cardiac symptoms.

#### Use with apomorphine

Domperidone is contra-indicated with QT prolonging drugs including apomorphine, unless the benefit of the co-administration with apomorphine outweighs the risks, and only if the recommended precautions for co-administration mentioned in the apomorphine SmPC are strictly fulfilled. Please refer to the apomorphine SmPC.

#### Renal impairment

The elimination half-life of domperidone is prolonged in severe renal impairment. For repeated administration, the dosing frequency of domperidone should be reduced to once or twice daily depending on the severity of the impairment, and the dose may need to be reduced. Such patients on prolonged therapy should be reviewed regularly (see section 5.2).

#### **Domperidone Oral Solution contains sorbitol, propylhydroxybenzoate (E216) and methylhydroxybenzoate (E218)**

- Each 5 ml contains 2.275 g of sorbitol (E420). Patients with hereditary problems of fructose intolerance (HFI) should not take this medicine.
- Each 5 ml contains 9.000 mg of propylhydroxybenzoate (E216) which may cause allergic reactions (possibly delayed).
- Each 5 ml contains 1.000 mg of methylhydroxybenzoate (E218) which may cause allergic reactions (possibly delayed).

### 9.3 How to take DOMSTAL BABY

Shake well before use for pediatric use.

Always take this medication exactly as described in this leaflet or as your doctor or pharmacist have told you. Check with your doctor if you are not sure.

If you have no symptom-relief after taking this medicine for 2 weeks continuously, consult your doctor.

#### **If you forget to take DOMSTAL BABY**

If you forget to take a dose of DOMSTAL BABY oral drops, take the next dose at the usual time. Do not take a double dose to make up for the forgotten dose.

#### **If you stop taking DOMSTAL BABY**

Should your doctor decide to stop your DOMSTAL BABY oral drops treatment, he/she will instruct you about the gradual withdrawal of DOMSTAL BABY.

If you have any further questions on the use of this medicine, ask your doctor or pharmacist.

### 9.4 Possible side effects

**Immune system disorders:** Anaphylactic reaction.

**Psychiatric disorders:** Loss of libido, Anxiety, Agitation, Nervousness.

**Nervous system disorders:** Somnolence, Headache, Convulsion, Extrapyrmidal disorder.

**Eye disorders:** Oculogyric crisis.

**Cardiac disorders:** Ventricular arrhythmias, Sudden cardiac death, QTc prolongation, Torsade de Pointes.

**Gastrointestinal disorders:** Dry mouth, Diarrhoea.

**Skin and subcutaneous tissue disorder:** Rash, Pruritus, Urticaria, Angioedema

**Renal and urinary disorders:** Urinary retention.

**Reproductive system and breast disorders:** Galactorrhoea, Breast pain, Breast tenderness.

**General disorders and administration site conditions:** Asthenia.

**Investigations:** Liver function test abnormal, Blood prolactin increased.

Like all medicines, this medicine can cause side effects, although not everybody gets them.

If you experience the following serious side effect stop taking DOMSTAL BABY and seek medical help immediately:

#### **Reporting of side effects**

If you get any side effects, talk to your doctor, pharmacist or nurse. This includes any possible side effects not listed in this leaflet. You can also report side effects directly via any point of contact of Torrent Pharma available at: [http://www.torrentpharma.com/Index.php/site/info/adverse\\_event\\_reporting](http://www.torrentpharma.com/Index.php/site/info/adverse_event_reporting). By reporting side effects, you can help provide more information on the safety of this medicine.

### 9.5 How to store DOMSTAL BABY

STORE AT A TEMPERATURE NOT EXCEEDING 30°C, PROTECTED FROM LIGHT AND MOISTURE.

## **9.6 Contents of the pack and other information**

DOMSTAL BABY is available in 5ml bottle pack.

## **10 Details of manufacturer**

Torrent Pharmaceuticals Ltd  
Indrad-382 721, Dist, Mehsana, INDIA, At:22, Sector-6A,I.I.E; SIDCUL,  
Ranipur, Haridwar-249 403, Uttarakhand.

## **11 Details of permission or licence number with date**

Mfg. Lic. No. 68/UA/LL/2015 issued on 15.12.2015

## **12. Date of revision**

FEB 2022

**MARKETED BY**



TORRENT PHARMACEUTICALS LTD.

**IN/DOMSTAL BABY 5ml/FEB-2022/03/PI**