

For the use of a Registered Medical Practitioner or a Hospital or a Laboratory only

**CYCLOSPASMOL
(Cyclandelate Capsules)**

COMPOSITION

CYCLOSPASMOL 200

Each hard gelatin capsule contains:

Cyclandelate U.S.P. 200 mg

Approved colors used in hard gelatin capsule shells.

CYCLOSPASMOL 400

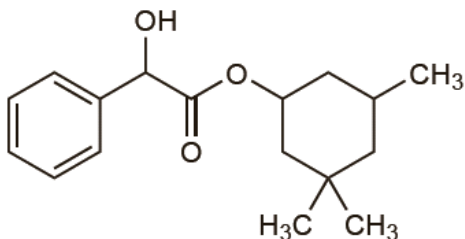
Each hard gelatin capsule contains:

Cyclandelate U.S.P. 400 mg

Approved colors used in hard gelatin capsule shells.

DESCRIPTION

Cyclandelate is a mandelic acid derivative with vasodilating and antispasmodic properties. Its 3,3,5-trimethylcyclohexyl 2-hydroxy-2-phenylacetate, molecular formula is $C_{17}H_{24}O_3$ and molecular weight is 276.4. Cyclospasmol contains cyclandelate, which enhances microcirculation.



CLINICAL PHARMACOLOGY

Cyclandelate improves the microcirculation by:

Inhibiting the deformability of RBCs.

Inhibiting the platelet aggregation.

A direct vasodilatory effect.

Cyclandelate produces peripheral vasodilation by a direct effect on vascular smooth muscle. Pharmacological action may be due to calcium-channel antagonism. A direct-acting smooth muscle relaxant used to dilate blood vessels. It may cause gastrointestinal distress and tachycardia.

Direct-acting vasodilators act predominantly on the arterioles reducing peripheral resistance and producing a fall in blood pressure. Their main use is in hypertension, although other drugs are generally preferred and also used in hypertensive crises.

INDICATIONS

Peripheral vascular disease:

- Atherosclerosis accompanied by intermittent claudication, cold hands and feet dystrophic conditions.
- Vasospastic states e.g. Raynaud's disease, Buerger's disease.
- Cerebrovascular disease
- Transient Ischaemic attacks initiated by vasospasm; hypertensive encephalopathy; neurological defects such as paresia, hemiplegia, aphasia and cerebral atherosclerosis with disturbance of concentration, disorientation, vertigo, insomnia, confusion, fatigue, loss of memory and disturbance in behaviour. One must remember that these diseases can manifest themselves in several ways, depending on the localization.

DOSAGE AND ADMINISTRATION

800 to 1600 mg (4 to 8 Capsules) daily or as directed by the Physician.

It is given orally in an initial dosage of up to 2 g daily in divided doses; a usual maintenance dose is 0.8 to 1.2 g daily.

CONTRAINDICATIONS

Acute phase of cerebrovascular accidents.

PRECAUTIONS

Patients with severe obliterative coronary artery disease or cerebrovascular disease.

ADVERSE EFFECTS

Flushes, GI upset, nausea, tingling, tachycardia, sweating, dizziness, headache.

EXPIRY DATE

Do not use later than date of expiry.

STORAGE

Store in cool, dry place

PRESENTATION

Cyclospasmol 200 and Cyclospasmol 400 are available in blister pack of 10 Capsules

MARKETED BY:



TORRENT PHARMACEUTICALS LTD.

Torrent House, Off Ashram Road,

Ahmedabad-380 009, INDIA