

**For the use of a Registered Medical Practitioner or a Hospital or a Laboratory only**

---

---

**TRI-OLMETOR**

---

---

**1. Generic Name**

Olmesartan Medoxomil, Amlodipine & Hydrochlorothiazide Tablets

**2. Qualitative and quantitative composition**

**TRI-OLMETOR 20**

Each film coated tablets contains:

Olmesartan Medoxomil I.P.....20 mg

Amlodipine Besilate I.P.

equivalent to Amlodipine.....5 mg

Hydrochlorothiazide I.P.....12.5 mg

Excipients.....q.s.

Colours : Red oxide of Iron, Yellow oxide of Iron, Black oxide of iron and Titanium dioxide I.P.

The excipients used are Silicified Microcrystalline Cellu, Croscarmellose Sodium, Starch, Pregel, Colloidal Silicon Dioxide, Magnesium Stearate, Starlac, Talc, Opadry II Pink.

**TRI-OLMETOR 40**

Each film coated tablet contains:

Olmesartan medoxomil I.P. 40 mg

Amlodipine Besilate I.P.

Equivalent to Amlodipine 5 mg

Hydrochlorothiazide I.P. 12.5 mg

Colours: Yellow oxide of Iron and Titanium dioxide I.P.

The excipients used are Silicified Microcrystalline Cellu, Croscarmellose Sodium, Starch, Pregel, Colloidal Silicon Dioxide, Magnesium Stearate, Starlac, Talc, Opadry II Yellow.

**3. Dosage form and strength**

Dosage Form: Film coated tablets

Strength: 20 mg + 5 mg + 12.5 mg/40 mg + 5 mg + 12.5 mg

## **4. Clinical particulars**

### **4.1 Therapeutic indication**

TRI-OLMETOR used for treatment of essential hypertension.

### **4.2 Posology and method of administration**

#### **Posology**

##### **Adults**

The recommended dose of TRI-OLMETOR is 1 tablet per day.

##### **Elderly (age 65 years or over)**

Caution, including more frequent monitoring of blood pressure, is recommended in elderly people.

An increase of the dosage should take place with care in elderly people.

Very limited data are available on the use in patients aged 75 years or older. Extreme caution, including more frequent monitoring of blood pressure, is recommended.

##### **Renal impairment**

The maximum dose in patients with mild to moderate renal impairment (creatinine clearance of 30 – 60 mL/min) is TRI-OLMETOR 20 mg/5 mg/12.5 mg, owing to limited experience of the 40 mg olmesartan medoxomil dosage in this patient group.

Monitoring of serum concentrations of potassium and creatinine is advised in patients with moderate renal impairment.

Use in patients with severe renal impairment (creatinine clearance < 30 mL/min) is contraindicated.

##### **Hepatic impairment**

TRI-OLMETOR should be used with caution in patients with mild hepatic impairment.

In patients with moderate hepatic impairment the maximum dose should not exceed 20 mg/5 mg/12.5 mg once daily. Close monitoring of blood pressure and renal function is advised in patients with hepatic impairment.

As with all calcium antagonists, amlodipine's half-life is prolonged in patients with impaired liver function and dosage recommendations have not been established. TRI-OLMETOR should therefore be administered with caution in these patients. The pharmacokinetics of amlodipine have not been studied in severe hepatic impairment. Amlodipine should be initiated at the lowest dose and titrated slowly in patients with impaired liver function.

Use in patients with severe hepatic impairment, cholestasis or biliary obstruction is contraindicated.

##### **Paediatric population**

TRI-OLMETOR is not recommended for use in patients aged below 18 years due to a lack of data on safety and efficacy.

### **Method of administration:**

The tablet should be swallowed with a sufficient amount of fluid (e. g. one glass of water). The tablet should not be chewed and should be taken at the same time each day.

TRI-OLMETOR can be taken with or without food.

### **4.3 Contraindications**

- Hypersensitivity to the active substances, to dihydropyridine derivatives or to sulfonamide-derived substances (since hydrochlorothiazide is a sulfonamide-derived drug) or to any of the excipients listed.
- Severe renal impairment
- Refractory hypokalaemia, hypercalcaemia, hyponatraemia and symptomatic hyperuricaemia.
- Severe hepatic insufficiency, cholestasis and biliary obstructive disorders.
- 2nd and 3rd trimester of pregnancy (see sections 4.4 and 4.6).
- The concomitant use of TRI-OLMETOR with aliskiren-containing products is contraindicated in patients with diabetes mellitus or renal impairment (GFR < 60 mL/min/1.73 m<sup>2</sup>).
- Due to the amlodipine component, TRI-OLMETOR is contraindicated in patients with:
  - Shock (including cardiogenic shock).
  - Severe hypotension
  - Obstruction of the outflow tract of the left ventricle (e.g. high grade aortic stenosis).
  - Haemodynamically unstable heart failure after acute myocardial infarction.

### **4.4 Special warnings and precautions for use**

#### **Patients with hypovolaemia or sodium depletion:**

Symptomatic hypotension may occur in patients who are volume and/or sodium depleted as a result of vigorous diuretic therapy, dietary salt restriction, diarrhoea or vomiting, especially after the first dose. Correction of this condition prior to administration of medication or close medical supervision at the start of the treatment is recommended.

#### **Other conditions with stimulation of the renin-angiotensin-aldosterone system:**

In patients whose vascular tone and renal function depend predominantly on the activity of the renin-angiotensin-aldosterone system (e. g. patients with severe congestive heart failure or underlying renal disease, including renal artery stenosis), treatment with medicinal products that affect this system has been associated with acute hypotension, azotaemia, oliguria or, rarely, acute renal failure.

#### **Renovascular hypertension:**

There is an increased risk of severe hypotension and renal insufficiency when patients with bilateral renal artery stenosis or stenosis of the artery to a single functioning kidney are treated with medicinal products that affect the renin-angiotensin-aldosterone system.

**Renal impairment and kidney transplantation:**

When used in patients with impaired renal function, periodic monitoring of serum concentrations of potassium and creatinine is recommended.

Use of TRI-OLMETOR is not recommended in patients with severe renal impairment (creatinine clearance < 30 mL/min).

Thiazide diuretic-associated azotaemia may occur in patients with impaired renal function.

If progressive renal impairment becomes evident, careful reappraisal of therapy is necessary, with consideration given to discontinuing diuretic therapy.

There is no experience in patients with a recent kidney transplant or in patients with end-stage renal impairment (i. e. creatinine clearance < 12 mL/min).

**Dual blockade of the renin-angiotensin-aldosterone system (RAAS):**

There is evidence that the concomitant use of ACE-inhibitors, angiotensin II receptor blockers or aliskiren increases the risk of hypotension, hyperkalaemia and decreased renal function (including acute renal failure). Dual blockade of RAAS through the combined use of ACE-inhibitors, angiotensin II receptor blockers or aliskiren is therefore not recommended.

If dual blockade therapy is considered absolutely necessary, this should only occur under specialist supervision and subject to frequent close monitoring of renal function, electrolytes and blood pressure.

ACE-inhibitors and angiotensin II receptor blockers should not be used concomitantly in patients with diabetic nephropathy.

**Hepatic impairment:**

Exposure to amlodipine and olmesartan medoxomil is increased in patients with hepatic impairment.

Furthermore, minor alterations of fluid and electrolyte balance during thiazide therapy may precipitate hepatic coma in patients with impaired hepatic function or progressive liver disease.

Care should be taken when TRI-OLMETOR is administered in patients with mild to moderate hepatic impairment.

In patients with moderate hepatic impairment, the dose of olmesartan medoxomil should not exceed 20 mg.

In patients with impaired hepatic function, amlodipine should be initiated at the lower end of the dosing range and caution should be used, both on initial treatment and when increasing the dose.

Use of TRI-OLMETOR is contraindicated in patients with severe hepatic impairment, cholestasis or biliary obstruction.

**Aortic and mitral valve stenosis, obstructive hypertrophic cardiomyopathy:**

Due to the amlodipine component of TRI-OLMETOR, as with other vasodilators, special caution is indicated in patients suffering from aortic or mitral stenosis, or obstructive hypertrophic cardiomyopathy.

**Primary aldosteronism:**

Patients with primary aldosteronism generally will not respond to anti-hypertensive medicinal products acting through inhibition of the renin-angiotensin system. Therefore, the use of TRI-OLMETOR is not recommended in such patients.

**Metabolic and endocrine effects:**

Thiazide therapy may impair glucose tolerance. In diabetic patients dosage adjustments of insulin or oral hypoglycaemic agents may be required. Latent diabetes mellitus may become manifest during thiazide therapy.

Increases in cholesterol and triglyceride levels are undesirable effects known to be associated with thiazide diuretic therapy.

Hyperuricaemia may occur or frank gout may be precipitated in some patients receiving thiazide therapy.

**Electrolyte imbalance:**

As for any patient receiving diuretic therapy, periodic determination of serum electrolytes should be performed at appropriate intervals.

Thiazides, including hydrochlorothiazide, can cause fluid or electrolyte imbalance (including hypokalaemia, hyponatraemia and hypochloraemic alkalosis). Warning signs of fluid or electrolyte imbalance are dryness of the mouth, thirst, weakness, lethargy, drowsiness, restlessness, muscle pain or cramps, muscle fatigue, hypotension, oliguria, tachycardia, and gastrointestinal disturbances such as nausea or vomiting.

The risk of hypokalaemia is greatest in patients with cirrhosis of the liver, in patients experiencing brisk diuresis, in patients who are receiving inadequate oral intake of electrolytes and in patients receiving concomitant therapy with corticosteroids or ACTH.

Conversely, due to antagonism at the angiotensin-II receptors (AT1) through the olmesartan medoxomil component of TRI-OLMETOR hyperkalaemia may occur, especially in the presence of renal impairment and/or heart failure, and diabetes mellitus. Close monitoring of serum potassium in patients at risk is recommended. Potassium-sparing diuretics, potassium supplements or potassium-containing salt substitutes and other medicinal products that may increase serum potassium levels (e. g. heparin) should be co-administered cautiously with TRI-OLMETOR and with frequent monitoring of potassium levels.

There is no evidence that olmesartan medoxomil would reduce or prevent diuretic-induced hyponatraemia. Chloride deficit is generally mild and usually does not require treatment.

Thiazides may decrease urinary calcium excretion and cause an intermittent and slight elevation of serum calcium in the absence of known disorders of calcium metabolism.

Hypercalcaemia may be evidence of hidden hyperparathyroidism. Thiazides should be discontinued before carrying out tests for parathyroid function.

Thiazides have been shown to increase the urinary excretion of magnesium, which may result in hypomagnesaemia.

Dilutional hyponatraemia may occur in oedematous patients in hot weather.

**Lithium:**

As with other angiotensin II receptor antagonists, the coadministration of TRI-OLMETOR and lithium is not recommended.

**Heart failure:**

As a consequence of the inhibition of the renin-angiotensin-aldosterone system, changes in renal function may be anticipated in susceptible individuals.

In patients with severe heart failure whose renal function may depend on the activity of the renin-angiotensin-aldosterone system, treatment with angiotensin-converting enzyme (ACE) inhibitors and angiotensin receptor antagonists has been associated with oliguria and/or progressive azotaemia and (rarely) with acute renal failure and/or death.

Patients with heart failure should be treated with caution. In a long-term, placebo controlled study of amlodipine in patients with severe heart failure (NYHA III and IV), the reported incidence of pulmonary oedema was higher in the amlodipine group than in the placebo group. Calcium channel blockers, including amlodipine, should be used with caution in patients with congestive heart failure, as they may increase the risk of future cardiovascular events and mortality.

**Sprue-like enteropathy:**

In very rare cases severe, chronic diarrhoea with substantial weight loss has been reported in patients taking olmesartan few months to years after drug initiation, possibly caused by a localized delayed hypersensitivity reaction. Intestinal biopsies of patients often demonstrated villous atrophy. If a patient develops these symptoms during treatment with olmesartan, and in the absence of other apparent etiologies, olmesartan treatment should be immediately discontinued and should not be restarted. If diarrhoea does not improve during the week after the discontinuation, further specialist (e.g. a gastro-enterologist) advice should be considered.

**Choroidal Effusion, Acute Myopia and Secondary Angle-Closure Glaucoma:**

Hydrochlorothiazide, a sulfonamide, can cause an idiosyncratic reaction, resulting in choroidal effusion with visual field defect, acute transient myopia and acute angle-closure glaucoma. Symptoms include acute onset of decreased visual acuity or ocular pain and typically occur within hours to weeks of drug initiation. Untreated acute angle-closure glaucoma can lead to permanent vision loss. The primary treatment is to discontinue hydrochlorothiazide as rapidly as possible. Prompt medical or surgical treatments may need to be considered if the intraocular pressure remains uncontrolled. Risk factors for developing acute angle-closure glaucoma may include a history of sulfonamide or penicillin allergy.

**Pregnancy:**

Angiotensin II receptor antagonists should not be initiated during pregnancy. Unless continued angiotensin II receptor antagonists therapy is considered essential, patients planning pregnancy should be changed to alternative anti-hypertensive treatments which have an established safety profile for use in pregnancy. When pregnancy is diagnosed, treatment with angiotensin II receptor antagonists should be stopped immediately, and, if appropriate, alternative therapy should be started.

**Paediatric population:**

TRI-OLMETOR is not indicated in children and adolescents under the age of 18 years.

**Elderly:**

In the elderly, increase of the dosage should take place with care.

**Photosensitivity:**

Cases of photosensitivity reactions have been reported with thiazide diuretics. If photosensitivity reaction occurs during treatment with TRI-OLMETOR, it is recommended to stop the treatment. If re-administration of the diuretic is deemed necessary, it is recommended to protect the areas exposed to the sun or to artificial UVA.

**Non-melanoma skin cancer:**

An increased risk of non-melanoma skin cancer (NMSC) [basal cell carcinoma (BCC) and squamous cell carcinoma (SCC)] with increasing cumulative dose of hydrochlorothiazide (HCTZ) exposure has been observed in two epidemiological studies based on the Danish National Cancer Registry. Photosensitizing actions of HCTZ could act as a possible mechanism for NMSC.

Patients taking HCTZ should be informed of the risk of NMSC and advised to regularly check their skin for any new lesions and promptly report any suspicious skin lesions. Possible preventive measures such as limited exposure to sunlight and UV rays and, in case of exposure, adequate protection should be advised to the patients in order to minimize the risk of skin cancer. Suspicious skin lesions should be promptly examined potentially including histological examinations of biopsies. The use of HCTZ may also need to be reconsidered in patients who have experienced previous NMSC.

**Other:**

As with any antihypertensive agent, excessive blood pressure reduction in patients with ischaemic heart disease or ischaemic cerebrovascular disease could result in a myocardial infarction or stroke.

Hypersensitivity reactions to hydrochlorothiazide may occur in patients with or without a history of allergy or bronchial asthma, but are more likely in patients with such a history.

Exacerbation or activation of systemic lupus erythematosus has been reported with the use of thiazide diuretics.

As with all other angiotensin II receptor antagonists, the blood pressure lowering effect of olmesartan is somewhat less in black patients than in non-black patients, however, this effect was not seen in one of the three clinical trials with Olmesartan, Amlodipine and Hydrochlorothiazide that included black patients (30 %).

## 4.5 Drugs interactions

### **Potential interactions related to the TRI-OLMETOR combination:**

#### ***Concomitant use not recommended***

##### *Lithium:*

Reversible increases in serum lithium concentrations and toxicity have been reported during concomitant administration of lithium with angiotensin converting enzyme inhibitors and, rarely, with angiotensin II receptor antagonists. In addition, renal clearance of lithium is reduced by thiazides and consequently the risk of lithium toxicity may be increased. Therefore use of TRI-OLMETOR and lithium in combination is not recommended. If use of the combination proves necessary, careful monitoring of serum lithium levels is recommended.

#### ***Concomitant use requiring caution***

##### *Baclofen:*

Potential of antihypertensive effect may occur.

##### *Non-steroidal anti-inflammatory medicinal products:*

NSAIDs (i.e. acetylsalicylic acid (> 3 g/day), COX-2 inhibitors and non-selective NSAIDs) may reduce the antihypertensive effect of thiazide diuretics and angiotensin II receptor antagonists.

In some patients with compromised renal function (e. g. dehydrated patients or elderly people with compromised renal function) the co-administration of angiotensin II receptor antagonists and agents that inhibit cyclooxygenase may result in further deterioration of renal function, including possible acute renal failure, which is usually reversible. Therefore, the combination should be administered with caution, especially in the elderly. Patients should be adequately hydrated and consideration should be given to monitoring of renal function after initiation of concomitant therapy and periodically thereafter.

#### ***Concomitant use to be taken into account***

##### *Amifostine:*

Potential of antihypertensive effect may occur.

##### *Other antihypertensive agents:*

The blood pressure lowering effect of TRI-OLMETOR can be increased by concomitant use of other antihypertensive medicinal products.

##### *Alcohol, barbiturates, narcotics or antidepressants:*

Potential of orthostatic hypotension may occur.

### **Potential interactions related to olmesartan medoxomil:**

#### ***Concomitant use not recommended***

##### *ACE-inhibitors, angiotensin II receptor blockers or aliskiren:*

Clinical trial data has shown that dual blockade of the renin-angiotensin-aldosterone-system (RAAS) through the combined use of ACE-inhibitors, angiotensin II receptor blockers or



aliskiren is associated with a higher frequency of adverse events such as hypotension, hyperkalaemia and decreased renal function (including acute renal failure) compared to the use of a single RAAS-acting agent.

*Medicinal products affecting potassium levels:*

Concomitant use of potassium-sparing diuretics, potassium supplements, salt substitutes containing potassium or other medicinal products that may increase serum potassium levels (e. g. heparin, ACE inhibitors) may lead to increases in serum potassium. If medicinal products that affect potassium are to be prescribed in combination with TRI-OLMETOR, monitoring of serum potassium is advised.

***Additional information***

*Bile acid sequestering agent colesevelam:*

Concurrent administration of the bile acid sequestering agent colesevelam hydrochloride reduces the systemic exposure and peak plasma concentration of olmesartan and reduces t<sub>1/2</sub>. Administration of olmesartan medoxomil at least 4 hours prior to colesevelam hydrochloride decreased the drug interaction effect. Administering olmesartan medoxomil at least 4 hours before the colesevelam hydrochloride dose should be considered.

After treatment with antacid (aluminium magnesium hydroxide), a modest reduction in bioavailability of olmesartan was observed.

Olmesartan medoxomil had no significant effect on the pharmacokinetics or pharmacodynamics of warfarin or the pharmacokinetics of digoxin.

Coadministration of olmesartan medoxomil with pravastatin had no clinically relevant effects on the pharmacokinetics of either component in healthy subjects.

Olmesartan had no clinically relevant inhibitory effects on human cytochrome P450 enzymes 1A1/2, 2A6, 2C8/9, 2C19, 2D6, 2E1 and 3A4 in vitro, and had no or minimal inducing effects on rat cytochrome P450 activities. No clinically relevant interactions between olmesartan and medicinal products metabolised by the above cytochrome P450 enzymes are expected.

**Potential interactions related to amlodipine**

***Concomitant use requiring caution***

*Effects of other medicinal products on amlodipine*

CYP3A4 inhibitors:

Concomitant use of amlodipine with strong or moderate CYP3A4 inhibitors (protease inhibitors, azole antifungals, macrolides like erythromycin or clarithromycin, verapamil or diltiazem) may give rise to significant increase in amlodipine exposure. The clinical translation of these pharmacokinetic variations may be more pronounced in the elderly. There is an increased risk of hypotension. Close observation of patients is recommended and dose adjustment may thus be required.

CYP3A4 inducers:

Upon co-administration of known inducers of the CYP3A4, the plasma concentration of amlodipine may vary. Therefore, blood pressure should be monitored and dose regulation

considered both during and after concomitant medication particularly with strong CYP3A4 inducers (e.g. rifampicin, hypericum perforatum).

Administration of amlodipine with grapefruit or grapefruit juice is not recommended as bioavailability may be increased in some patients resulting in increased blood pressure lowering effects.

Dantrolene (infusion): In animals, lethal ventricular fibrillation and cardiovascular collapse are observed in association with hyperkalaemia after administration of verapamil and intravenous dantrolene. Due to risk of hyperkalaemia, it is recommended that the co-administration of calcium channel blockers such as amlodipine be avoided in patients susceptible to malignant hyperthermia and in the management of malignant hyperthermia.

#### *Effects of amlodipine on other medicinal products*

The blood pressure-lowering effect of amlodipine adds to the blood pressure-lowering effects of other antihypertensive agents.

In clinical interaction studies, amlodipine did not affect the pharmacokinetics of atorvastatin, digoxin or warfarin.

Simvastatin: Co-administration of multiple doses of 10 mg of amlodipine with 80 mg simvastatin resulted in a 77% increase in exposure to simvastatin compared to simvastatin alone. Limit the dose of simvastatin in patients on amlodipine to 20 mg daily.

Tacrolimus: There is a risk of increased tacrolimus blood levels when co-administered with amlodipine. In order to avoid toxicity of tacrolimus, administration of amlodipine in a patient treated with tacrolimus requires monitoring of tacrolimus blood levels and dose adjustment of tacrolimus when appropriate.

Cyclosporine: In a prospective study in renal transplant patients, an average 40% increase in trough cyclosporine levels was observed when used concomitantly with amlodipine. The co-administration of TRI-OLMETOR with cyclosporine may increase exposure to cyclosporine. Monitor trough cyclosporine levels during concomitant use and cyclosporine dose reductions should be made as necessary.

### **Potential interactions related to hydrochlorothiazide:**

#### ***Concomitant use not recommended***

##### *Medicinal products affecting potassium levels:*

The potassium-depleting effect of hydrochlorothiazide (see section 4.4) may be potentiated by the coadministration of other medicinal products associated with potassium loss and hypokalaemia (e. g. other kaliuretic diuretics, laxatives, corticosteroids, ACTH, amphotericin, carbenoxolone, penicillin G sodium or salicylic acid derivatives). Such concomitant use is therefore not recommended.

#### ***Concomitant use requiring caution***

##### *Calcium salts:*

Thiazide diuretics may increase serum calcium owing to decreased excretion. If calcium supplements must be prescribed, serum calcium should be monitored and calcium dosage adjusted accordingly.

*Cholestyramine and colestipol resins:*

Absorption of hydrochlorothiazide is impaired in the presence of anionic exchange resins.

*Digitalis glycosides:*

Thiazide-induced hypokalaemia or hypomagnesaemia may favour the onset of digitalis-induced cardiac arrhythmias.

*Medicinal products affected by serum potassium disturbances:*

Periodic monitoring of serum potassium and ECG is recommended when TRI-OLMETOR is administered with medicinal products affected by serum potassium disturbances (e. g. digitalis glycosides and antiarrhythmics) and with the following torsades de pointes (ventricular tachycardia)-inducing medicinal products (including some antiarrhythmics), hypokalaemia being a predisposing factor to torsades de pointes (ventricular tachycardia):

- Class Ia antiarrhythmics (e. g. quinidine, hydroquinidine, disopyramide).
- Class III antiarrhythmics (e. g. amiodarone, sotalol, dofetilide, ibutilide).
- Some antipsychotics (e. g. thioridazine, chlorpromazine, levomepromazine, trifluoperazine, cyamemazine, sulpiride, sultopride, amisulpride, tiapride, pimozide, haloperidol, droperidol).
- Others (e. g. bepridil, cisapride, diphemanil, erythromycin IV, halofantrin, mizolastin, pentamidine, sparfloxacin, terfenadine, vincamine IV).

*Non-depolarizing skeletal muscle relaxants (e. g. tubocurarine):*

The effect of nondepolarizing skeletal muscle relaxants may be potentiated by hydrochlorothiazide.

*Anticholinergic agents (e. g. atropine, biperiden):*

Increase of the bioavailability of thiazide-type diuretics by decreasing gastrointestinal motility and stomach emptying rate.

*Antidiabetic medicinal products (oral agents and insulin):*

The treatment with a thiazide may influence the glucose tolerance. Dosage adjustment of the antidiabetic medicinal product may be required.

*Metformin:*

Metformin should be used with caution because of the risk of lactic acidosis induced by possible functional renal failure linked to hydrochlorothiazide.

*Beta-blockers and diazoxide:*

The hyperglycaemic effect of beta-blockers and diazoxide may be enhanced by thiazides.

*Pressor amines (e. g. noradrenaline):*

The effect of pressor amines may be decreased.

*Medicinal products used in the treatment of gout (e. g. probenecid, sulfinpyrazone and allopurinol):*

Dosage adjustment of uricosuric medicinal products may be necessary since hydrochlorothiazide may raise the level of serum uric acid. Increase in dosage of probenecid or sulfinpyrazone may be necessary. Coadministration of a thiazide may increase the incidence of hypersensitivity reactions to allopurinol.

*Amantadine:*

Thiazides may increase the risk of adverse effects caused by amantadine.

*Cytotoxic agents (e. g. cyclophosphamide, methotrexate):*

Thiazides may reduce the renal excretion of cytotoxic medicinal products and potentiate their myelosuppressive effects.

*Salicylates:*

In case of high dosages of salicylates hydrochlorothiazide may enhance the toxic effect of the salicylates on the central nervous system.

*Methyldopa:*

There have been isolated reports of haemolytic anaemia occurring with concomitant use of hydrochlorothiazide and methyldopa.

*Cyclosporine:*

Concomitant treatment with cyclosporine may increase the risk of hyperuricaemia and gout-type complications.

*Tetracyclines:*

Concomitant administration of tetracyclines and thiazides increases the risk of tetracycline-induced increase in urea. This interaction is probably not applicable to doxycycline.

## **4.6 Use in special populations**

### **Pregnancy**

The use of TRI-OLMETOR is contra-indicated during the 2nd and 3rd trimester of pregnancy. Given the effects of the individual components in this combination product on pregnancy, the use of TRI-OLMETOR is not recommended during the first trimester of pregnancy.

*Olmесartan medoxomil*

The use of angiotensin II receptor antagonists is not recommended during the first trimester of pregnancy. The use of angiotensin II receptor antagonists is contra-indicated during the 2nd and 3rd trimester of pregnancy.

Epidemiological evidence regarding the risk of teratogenicity following exposure to ACE inhibitors during the first trimester of pregnancy has not been conclusive; however a small increase in risk cannot be excluded. Whilst there is no controlled epidemiological data on the risk with angiotensin II receptor antagonists, similar risks may exist for this class of drugs. Unless continued angiotensin receptor blocker therapy is considered essential, patients planning pregnancy should be changed to alternative anti-hypertensive treatments, which have an established safety profile for use in pregnancy. When pregnancy is diagnosed, treatment with angiotensin II receptor antagonists should be stopped immediately, and, if appropriate,

alternative therapy should be started.

Exposure to angiotensin II receptor antagonists therapy during the 2nd and 3rd trimesters is known to induce human fetotoxicity (decreased renal function, oligohydramnios, skull ossification retardation) and neonatal toxicity (renal failure, hypotension, hyperkalaemia).

Should exposure to angiotensin II receptor antagonists have occurred from the 2nd trimester of pregnancy, ultrasound check of renal function and skull is recommended.

Infants, whose mothers have taken angiotensin II receptor antagonists should be closely observed for hypotension.

### *Hydrochlorothiazide*

There is limited experience with hydrochlorothiazide during pregnancy, especially during the first trimester. Animal studies are insufficient.

Hydrochlorothiazide crosses the placenta. Based on the pharmacological mechanism of action of hydrochlorothiazide its use during the 2nd and 3rd trimester may compromise foeto-placental perfusion and may cause foetal and neonatal effects like icterus, disturbance of electrolyte balance and thrombocytopenia.

Hydrochlorothiazide should not be used for gestational oedema, gestational hypertension or pre-eclampsia due to the risk of decreased plasma volume and placental hypoperfusion, without a beneficial effect on the course of the disease.

Hydrochlorothiazide should not be used for essential hypertension in pregnant women except in rare situations where no other treatment could be used.

### *Amlodipine*

Data on a limited number of exposed pregnancies do not indicate that amlodipine or other calcium receptor antagonists have a harmful effect on the health of the fetus. However, there may be a risk of prolonged delivery.

### **Breastfeeding**

During breastfeeding, TRI-OLMETOR is not recommended and alternative treatments with better established safety profiles during breastfeeding are preferable, especially while nursing a newborn or preterm infant.

Olmesartan is excreted into the milk of lactating rats. However, it is not known whether olmesartan passes into human milk.

Amlodipine is excreted in human milk. The proportion of the maternal dose received by the infant has been estimated with an interquartile range of 3 - 7%, with a maximum of 15%. The effect of amlodipine on infants is unknown.

Hydrochlorothiazide is excreted in human milk in small amounts. Thiazides in high doses causing intense diuresis can inhibit the milk production.

The use of TRI-OLMETOR during breastfeeding is not recommended. If TRI-OLMETOR is used during breastfeeding, doses should be kept as low as possible.

### **Fertility**

Reversible biochemical changes in the head of spermatozoa have been reported in some

patients treated by calcium channel blockers.

Clinical data are insufficient regarding the potential effect of amlodipine on fertility. In one rat study, adverse effects were found on male fertility

#### 4.7 Effects on ability to drive and use machines

No studies on the effects on the ability to drive and use machines have been performed.

However, it should be borne in mind that dizziness, headache, nausea or fatigue may occasionally occur in patients taking antihypertensive therapy and that these symptoms may impair the ability to react. Caution is recommended especially at the start of treatment.

#### 4.8 Undesirable effects

The safety of olmesartan, amlodipine and hydrochlorothiazide was investigated in reported clinical trials in 7826 patients receiving olmesartan medoxomil in combination with amlodipine and hydrochlorothiazide.

Adverse reactions from clinical trials, post-authorization safety studies and spontaneous reporting are summarized in table 1 for TRI-OLMETOR as well as for the individual components olmesartan medoxomil, amlodipine and hydrochlorothiazide based on the known safety profile of the single components.

The most commonly reported adverse reactions during treatment with TRI-OLMETOR are peripheral oedema, headache and dizziness.

The following terminologies have been used in order to classify the occurrence of undesirable effects:

Very common ( $\geq 1/10$ )

Common ( $\geq 1/100$  to  $< 1/10$ )

Uncommon ( $\geq 1/1,000$  to  $< 1/100$ )

Rare ( $\geq 1/10,000$  to  $< 1/1,000$ )

Very rare ( $< 1/10,000$ )

Not known (cannot be estimated from the available data)

Table 1: Overview of adverse reactions with TRI-OLMETOR and the single components

MedDRA System Organ Class	Adverse reactions	Frequency			
		Olmesartan+Aml odipine+HCTZ	Olmesartan	Amlodipine	HCTZ
Infections and infestations	Upper respiratory tract infection	Common			
	Nasopharyngitis	Common			

MedDRA System Organ Class	Adverse reactions	Frequency			
		Olmesartan+Amlodipine+HCTZ	Olmesartan	Amlodipine	HCTZ
	Urinary tract infection	Common	Common		
	Sialadenitis				Rare
Neoplasms benign, malignant and unspecified (incl cysts and polyps)	Non-melanoma skin cancer (Basal cell carcinoma and Squamous cell carcinoma)				Not known
Blood and lymphatic system disorders	Leucopenia			Very rare	Rare
	Thrombocytopenia		Uncommon	Very rare	Rare
	Bone marrow depression				Rare
	Neutropenia/Aggranulocytosis				Rare
	Haemolytic anaemia				Rare
	Aplastic anaemia				Rare
Immune system disorders	Anaphylactic reaction		Uncommon		
	Drug hypersensitivity			Very rare	
Metabolism and nutrition	Hyperkalaemia	Uncommon	Rare		
	Hypokalaemia	Uncommon			Common

MedDRA System Organ Class disorders	Adverse reactions	Frequency			
		Olmesartan+Aml odipine+HCTZ	Olmesartan	Amlodipine	HCTZ
	Anorexia				Uncommon
	Glycosuria				Common
	Hypercalcaemia				Common
	Hyperglycaemia			Very rare	Common
	Hypomagnesaemia				Common
	Hyponatramia				Common
	Hypochloraemia				Common
	Hypertriglyceridaemia		Common		Very common
	Hypercholesterolaemia				Very common
	Hyperuricaemia		Common		Very common
	Hypochloraemic alkalosis				Very rare
	Hyperamylasaemia				Common
Psychiatric disorders	Confusional state			Rare	Common
	Depression			Uncommon	Rare
	Apathy				Rare
	Irritability			Uncommon	



MedDRA System Organ Class	Adverse reactions	Frequency			
		Olmesartan+Aml odipine+HCTZ	Olmesartan	Amlodipine	HCTZ
	Restlessness				Rare
	Mood changes (including anxiety)			Uncommon	
	Sleep disorders (including insomnia)			Uncommon	Rare
Nervous system disorders	Dizziness	Common	Common	Common	Common
	Headache	Common	Common	Common	Rare
	Postural dizziness	Uncommon			
	Presyncope	Uncommon			
	Dysgeusia			Uncommon	
	Hypertonia			Very rare	
	Hypoaesthesia			Uncommon	
	Paraesthesia			Uncommon	Rare
	Peripheral neuropathy			Very rare	
	Somnolence			Common	
	Syncope			Uncommon	
	Convulsions				Rare
	Loss of appetite				Uncommon
	Tremor			Uncommon	

MedDRA System Organ Class	Adverse reactions	Frequency			
		Olmesartan+Amlodipine+HCTZ	Olmesartan	Amlodipine	HCTZ
	Extrapyramidal disorder			Not known	
Eye disorders	Visual disturbance (including diplopia, blurred vision)			Common	Rare
	Lacrimation decreased				Rare
	Worsening of myopia				Uncommon
	Xanthopsia				Rare
	Acute myopia, acute angleclosure glaucoma				Not known
	Choroidal effusion				Not known
Ear and labyrinth disorders	Vertigo	Uncommon	Uncommon		Rare
	Tinnitus			Uncommon	
Cardiac disorders	Palpitations	Common		Common	
	Tachycardia	Uncommon			
	Myocardial infarction			Very rare	
	Arrhythmia (including bradycardia, ventricular			Uncommon	Rare

MedDRA System Organ Class	Adverse reactions	Frequency			
		Olmesartan+Amlodipine+HCTZ	Olmesartan	Amlodipine	HCTZ
	tachycardia and atrial fibrillation)				
	Angina pectoris		Uncommon	Uncommon (incl. aggravation of angina pectoris)	
Vascular disorders	Hypotension	Common	Rare	Uncommon	
	Flushing	Uncommon		Common	
	Orthostatic hypotension				Uncommon
	Vasculitis (including necrotising angiitis)			Very rare	Rare
	Thrombosis				Rare
	Embolism				Rare
Respiratory, thoracic and mediastinal disorders	Cough	Uncommon	Common	Uncommon	
	Bronchitis		Common		
	Dyspnoea			Common	Rare
	Pharyngitis		Common		
	Rhinitis		Common	Uncommon	
	Acute interstitial pneumonia				Rare

MedDRA System Organ Class	Adverse reactions	Frequency			
		Olmesartan+Aml odipine+HCTZ	Olmesartan	Amlodipine	HCTZ
	Respiratory distress				Uncommon
	Pulmonary oedema				Rare
Gastrointestinal disorders	Diarrhoea	Common	Common		Common
	Nausea	Common	Common	Common	Common
	Constipation	Common			Common
	Dry mouth	Uncommon		Uncommon	
	Abdominal pain		Common	Common	Common
	Altered bowel habits (including diarrhoea and constipation)			Common	
	Meteorism				Common
	Dyspepsia		Common		
	Gastritis			Very rare	
	Gastric irritation				Common
	Gastroenteritis		Common		
	Gingival hyperplasia			Very rare	
	Paralytic ileus				Very rare
	Pancreatitis			Very rare	Rare
	Vomiting		Uncommon	Uncommon	Common

MedDRA System Organ Class	Adverse reactions	Frequency			
		Olmesartan+Amlodipine+HCTZ	Olmesartan	Amlodipine	HCTZ
	Sprue-like enteropathy		Very rare		
Hepato-biliary disorders	Hepatitis			Very rare	
	Jaundice (intrahepatic cholestatic icterus)			Very rare	Rare
	Acute cholecystitis				Rare
Skin and subcutaneous tissue disorders	Alopecia			Uncommon	
	Angioedema		Rare	Very rare	
	Allergic dermatitis		Uncommon		
	Erythema multiforme			Very rare	
	Erythema				Uncommon
	Cutaneous lupus erythematoses-like reactions				Rare
	Exanthema		Uncommon	Uncommon	
	Exfoliative dermatitis			Very rare	
	Hyperhidrosis			Uncommon	
	Photosensitivity reactions			Very rare	Uncommon
	Pruritus		Uncommon	Uncommon	Uncommon

MedDRA System Organ Class	Adverse reactions	Frequency			
		Olmesartan+Aml odipine+HCTZ	Olmesartan	Amlodipine	HCTZ
	Purpura			Purpura	Purpura
	Quincke oedema			Very rare	
	Rash		Uncommon	Uncommon	Uncommon
	Reactivation of cutaneous lupus erythematoses				Rare
	Toxic epidermal necrolysis			Not known	Rare
	Skin discoloration			Uncommon	
	Stevens-Johnson syndrome			Very rare	
	Urticaria		Uncommon	Uncommon	Uncommon
Musculoskeletal and connective tissue disorders	Muscle spasm	Common	Rare	Common	
	Joint swelling	Common			
	Muscular weakness	Uncommon			Rare
	Ankle swelling			Common	
	Arthralgia			Uncommon	
	Arthritis		Common		
	Back pain		Common	Uncommon	
	Paresia				Rare
	Myalgia		Uncommon	Uncommon	

MedDRA System Organ Class	Adverse reactions	Frequency			
		Olmesartan+Amlodipine+HCTZ	Olmesartan	Amlodipine	HCTZ
	Skeletal pain		Common		
Renal and urinary disorders	Pollakiuria	Common			
	Increased urinary frequency			Uncommon	
	Acute renal failure		Rare		
	Haematuria		Common		
	Micturition disorder			Uncommon	
	Nocturia			Uncommon	
	Interstitial nephritis				Rare
	Renal insufficiency		Rare		Rare
Reproductive system and breast disorders	Erectile dysfunction	Uncommon		Uncommon	Uncommon
	Gynaecomastia			Uncommon	
General disorders and administration site conditions	Asthenia	Common	Uncommon	Common	
	Peripheral oedema	Common	Common		
	Fatigue	Common	Common	Common	
	Chest pain		Common	Uncommon	
	Fever				Rare
	Influenza-like symptoms		Common		

MedDRA System Organ Class	Adverse reactions	Frequency			
		Olmesartan+Aml odipine+HCTZ	Olmesartan	Amlodipine	HCTZ
	Lethargy		Rare		
	Malaise		Uncommon	Uncommon	
	Oedema			Very common	
	Pain		Common	Uncommon	
	Face oedema		Uncommon		
Investigations	Blood creatinine increased	Common	Rare		Common
	Blood urea increased	Common	Common		Common
	Blood uric acid increased	Common			
	Blood potassium decreased	Uncommon			
	Gamma glytamyl transferase increased	Uncommon			
	Alanine aminotransferase increased	Uncommon			
	Aspartate aminotransferase increased	Uncommon			
	Blood creatine		Common		



MedDRA System Organ Class	Adverse reactions	Frequency			
		Olmesartan+Amlodipine+HCTZ	Olmesartan	Amlodipine	HCTZ
	phosphokinase increased				
	Weight decrease			Uncommon	
	Weight increase			Uncommon	

Single cases of rhabdomyolysis have been reported in temporal association with the intake of angiotensin II receptor blockers. Single cases of extrapyramidal syndrome have been reported in patients treated with amlodipine.

Non-melanoma skin cancer: Based on available data from epidemiological studies, cumulative dose-dependent association between HCTZ and NMSC has been observed.

Further adverse reactions reported in clinical trials or from post marketing experience with a fixed-dose combination of olmesartan medoxomil and amlodipine, olmesartan medoxomil monotherapy or amlodipine monotherapy or reported in a higher frequency for the dual combination (Table 2):

System Organ Class	Frequency	Adverse reactions
<b>Immune system disorders</b>	Rare	Drug hypersensitivity
<b>Gastrointestinal disorders</b>	Uncommon	Upper abdominal pain
<b>Reproductive system and breast disorders</b>	Uncommon	Libido decreased
<b>General disorders and administration site conditions</b>	Common	Pitting oedema
	Uncommon	Lethargy
<b>Musculoskeletal and connective tissue disorders</b>	Uncommon	Pain in extremity

Further adverse reactions reported in clinical trials or from post marketing experience with a fixed-dose combination of olmesartan medoxomil and hydrochlorothiazide, olmesartan medoxomil monotherapy or hydrochlorothiazide monotherapy or reported in a higher frequency for the dual combination (Table 3):

<b>Table 3: Combination of olmesartan medoxomil and hydrochlorothiazide</b>		
<b>System Organ Class</b>	<b>Frequency</b>	<b>Adverse reactions</b>
<b>Nervous system disorders</b>	Rare	Disturbances in consciousness (such as loss of consciousness)
<b>Skin and subcutaneous tissue disorders</b>	Uncommon	Eczema
<b>Musculoskeletal and connective tissue disorders</b>	Uncommon	Pain in extremity
<b>Investigations</b>	Rare	Minor decreases in mean haemoglobin and haematocrit values

### **Reporting of side effects**

If you get any side effects, talk to your doctor or pharmacist. This includes any possible side effects not listed in this leaflet. You can also report side effects directly via any point of contact of Torrent Pharma available at: [https://www.torrentpharma.com/index.php/site/info/adverse\\_event\\_reporting](https://www.torrentpharma.com/index.php/site/info/adverse_event_reporting). By reporting side effects, you can help provide more information on the safety of this medicine.

### **4.9 Overdose**

#### Symptoms:

The maximum dose of TRI-OLMETOR is 40 mg/10 mg/25 mg once daily. There is no information on overdosage with TRI-OLMETOR in humans. The most likely effect of TRI-OLMETOR overdosage is hypotension.

The most likely effects of olmesartan medoxomil overdosage are hypotension and tachycardia; bradycardia could be encountered if parasympathetic (vagal) stimulation occurred.

Amlodipine overdosage can be expected to lead to excessive peripheral vasodilatation with marked hypotension and possibly a reflex tachycardia. Marked and potentially prolonged systemic hypotension, up to and including shock with fatal outcome, has been reported.

Overdosage with hydrochlorothiazide is associated with electrolyte depletion (hypokalaemia, hypochloraemia) and dehydration resulting from excessive diuresis.

The most common signs and symptoms of overdose are nausea and somnolence. Hypokalaemia may result in muscle spasm and/or accentuate cardiac arrhythmias associated with the concomitant use of digitalis glycosides or certain anti-arrhythmic medicinal products.

Treatment:

In the event of overdosage with TRI-OLMETOR, treatment should be symptomatic and supportive. Management depends upon the time since ingestion and the severity of the symptoms.

If intake is recent, gastric lavage may be considered. In healthy subjects, the administration of activated charcoal immediately or up to 2 hours after ingestion of amlodipine has been shown to reduce substantially the absorption of amlodipine.

Clinically significant hypotension due to an overdose of TRI-OLMETOR requires active support of the cardiovascular system, including close monitoring of heart and lung function, elevation of the extremities, and attention to circulating fluid volume and urine output. A vasoconstrictor may be helpful in restoring vascular tone and blood pressure, provided that there is no contraindication to its use. Intravenous calcium gluconate may be beneficial in reversing the effects of calcium channel blockade.

Serum electrolytes and creatinine should be monitored frequently. If hypotension occurs, the patient should be placed in a supine position, with salt and volume replacements given quickly.

Since amlodipine is highly protein-bound, dialysis is not likely to be of benefit. The dialysability of olmesartan or hydrochlorothiazide is unknown.

The degree to which olmesartan and hydrochlorothiazide are removed by haemodialysis has not been established.

## **5. Pharmacological properties**

### **5.1 Mechanism of Action**

TRI-OLMETOR is a combination of an angiotensin II receptor antagonist, olmesartan medoxomil, a calcium channel blocker, amlodipine besilate and a thiazide diuretic, hydrochlorothiazide. The combination of these ingredients has an additive antihypertensive effect, reducing blood pressure to a greater degree than each component alone.

### **5.2 Pharmacodynamic properties**

Pharmacotherapeutic group: Angiotensin II antagonists, calcium channel blockers and diuretics.

ATC code: C09DX03

Olmesartan medoxomil is an orally active, selective angiotensin II receptor (type AT1) antagonist. Angiotensin II is the primary vasoactive hormone of the renin-angiotensin-aldosterone system and plays a significant role in the pathophysiology of hypertension. The effects of angiotensin II include vasoconstriction, stimulation of the synthesis and release of aldosterone, cardiac stimulation and renal reabsorption of sodium. Olmesartan blocks the vasoconstrictor and aldosterone-secreting effects of angiotensin II by blocking its binding to

the AT<sub>1</sub> receptor in tissues including vascular smooth muscle and the adrenal gland. The action of olmesartan is independent of the source or route of synthesis of angiotensin II. The selective antagonism of the angiotensin II (AT<sub>1</sub>) receptors by olmesartan results in increases in plasma Renin levels and angiotensin I and II concentrations, and some decrease in plasma aldosterone concentrations.

In hypertension, olmesartan medoxomil causes a dose-dependent, long-lasting reduction in arterial blood pressure. There has been no evidence of first-dose hypotension, of tachyphylaxis during long-term treatment, or of rebound hypertension after abrupt cessation of therapy.

Once daily dosing with olmesartan medoxomil provides an effective and smooth reduction in blood pressure over the 24-hour dose interval. Once daily dosing produced similar decreases in blood pressure as twice daily dosing at the same total daily dose.

With continuous treatment, maximum reductions in blood pressure are achieved by 8 weeks after the initiation of therapy, although a substantial proportion of the blood pressure lowering effect is already observed after 2 weeks of treatment.

The effect of olmesartan medoxomil on mortality and morbidity is not yet known.

The reported Randomised Olmesartan and Diabetes Microalbuminuria Prevention (ROADMAP) study in 4447 patients with type 2 diabetes, normoalbuminuria and at least one additional cardiovascular risk factor, investigated whether treatment with olmesartan could delay the onset of microalbuminuria. During the median follow-up duration of 3.2 years, patients received either olmesartan or placebo in addition to other antihypertensive agents, except ACE inhibitors or ARBs.

For the primary endpoint, the study demonstrated a significant risk reduction in the time to onset of microalbuminuria, in favour of olmesartan. After adjustment for BP differences this risk reduction was no longer statistically significant. 8.2% (178 of 2160) of the patients in the olmesartan group and 9.8% (210 of 2139) in the placebo group developed microalbuminuria.

For the secondary endpoints, cardiovascular events occurred in 96 patients (4.3%) with olmesartan and in 94 patients (4.2%) with placebo. The incidence of cardiovascular mortality was higher with olmesartan compared to placebo treatment (15 patients (0.7%) vs. 3 patients (0.1%)), despite similar rates for non-fatal stroke (14 patients (0.6%) vs. 8 patients (0.4%)), non-fatal myocardial infarction (17 patients (0.8%) vs. 26 patients (1.2%)) and non-cardiovascular mortality (11 patients (0.5%) vs. 12 patients (0.5%)). Overall mortality with olmesartan was numerically increased (26 patients (1.2%) vs. 15 patients (0.7%)), which was mainly driven by a higher number of fatal cardiovascular events.

The reported Olmesartan Reducing Incidence of End-stage Renal Disease in Diabetic Nephropathy Trial (ORIENT) investigated the effects of olmesartan on renal and cardiovascular outcomes in 577 randomized Japanese and Chinese type 2 diabetic patients with overt nephropathy. During a median follow-up of 3.1 years, patients received either olmesartan or placebo in addition to other antihypertensive agents including ACE inhibitors.

The primary composite endpoint (time to first event of the doubling of serum creatinine, end-stage renal disease, all-cause death) occurred in 116 patients in the olmesartan group (41.1%) and 129 patients in the placebo group (45.4%) (HR 0.97 (95% CI 0.75 to 1.24); p=0.791). The composite secondary cardiovascular endpoint occurred in 40 olmesartan-treated patients

(14.2%) and 53 placebo-treated patients (18.7%). This composite cardiovascular endpoint included cardiovascular death in 10 (3.5%) patients receiving olmesartan versus 3 (1.1%) receiving placebo, overall mortality 19 (6.7%) versus 20 (7.0%), non-fatal stroke 8 (2.8%) versus 11 (3.9%) and non-fatal myocardial infarction 3 (1.1%) versus 7 (2.5%), respectively.

Amlodipine component of TRI-OLMETOR is a calcium channel blocker that inhibits the transmembrane influx of calcium ions through the potential-dependent L-type channels into the heart and smooth muscle. Experimental data indicate that amlodipine binds to both dihydropyridine and non-dihydropyridine binding sites. Amlodipine is relatively vessel-selective, with a greater effect on vascular smooth muscle cells than on cardiac muscle cells. The antihypertensive effect of amlodipine derives from a direct relaxant effect on arterial smooth muscle, which leads to a lowering of peripheral resistance and hence of blood pressure.

In hypertensive patients, amlodipine causes a dose-dependent, long-lasting reduction in arterial blood pressure. There has been no evidence of first-dose hypotension, of tachyphylaxis during long-term treatment, or of rebound hypertension after abrupt cessation of therapy.

Following administration of therapeutic doses to patients with hypertension, amlodipine produces an effective reduction in blood pressure in the supine, sitting and standing positions. Chronic use of amlodipine is not associated with significant changes in heart rate or plasma catecholamine levels. In hypertensive patients with normal renal function, therapeutic doses of amlodipine reduce renal vascular resistance and increase glomerular filtration rate and effective renal plasma flow, without changing filtration fraction or proteinuria.

In reported haemodynamic studies in patients with heart failure and in clinical studies based on exercise tests in patients with NYHA class II-IV heart failure, amlodipine was found not to cause any clinical deterioration, as measured by exercise tolerance, left ventricular ejection fraction and clinical signs and symptoms.

A reported placebo-controlled study (PRAISE) designed to evaluate patients with NYHA class III-IV heart failure receiving digitalis, diuretics and ACE inhibitors, has shown that amlodipine did not lead to an increase in the risk of mortality and morbidity in patients with heart failure.

In a follow-up, long-term, placebo controlled study (PRAISE-2) of amlodipine in patients with NYHA III and IV heart failure without clinical symptoms or objective findings suggestive of underlying ischaemic disease, on stable doses of ACE inhibitors, digitalis, and diuretics, amlodipine had no effect on total or cardiovascular mortality. In this same population amlodipine was associated with increased reports of pulmonary oedema despite no significant difference in the incidence of worsening heart failure as compared to placebo.

A reported randomized double-blind morbidity-mortality study called the Antihypertensive and Lipid-Lowering Treatment to Prevent Heart Attack Trial (ALLHAT) was performed to compare newer drug therapies: amlodipine 2.5-10 mg/d (calcium channel blocker) or lisinopril 10-40 mg/d (ACE-inhibitor) as first-line therapies to that of the thiazide-diuretic, chlorthalidone 12.5-25 mg/d in mild to moderate hypertension.”

A total of 33,357 hypertensive patients aged 55 or older were randomized and followed for a mean of 4.9 years. The patients had at least one additional CHD risk factor, including: previous myocardial infarction or stroke (> 6 months prior to enrollment) or documentation of other atherosclerotic CVD (overall 51.5%), type 2 diabetes (36.1%), HDL-C < 35 mg/dL (11.6%),

left ventricular hypertrophy diagnosed by electrocardiogram or echocardiography (20.9%), current cigarette smoking (21.9%).

The primary endpoint was a composite of fatal CHD or non-fatal myocardial infarction. There was no significant difference in the primary endpoint between amlodipine-based therapy and chlorthalidone-based therapy: RR 0.98 95% CI (0.90-1.07) p=0.65. Among secondary endpoints, the incidence of heart failure (component of a composite combined cardiovascular endpoint) was significantly higher in the amlodipine group as compared to the chlorthalidone group (10.2% vs. 7.7%, RR 1.38, 95% CI [1.25-1.52] p<0.001). However, there was no significant difference in all-cause mortality between amlodipine-based therapy and chlorthalidone-based therapy. RR 0.96 95% CI [0.89-1.02] p=0.20.

Hydrochlorothiazide is a thiazide diuretic. The mechanism of the antihypertensive effect of thiazide diuretics is not fully known. Thiazides affect the renal tubular mechanisms of electrolyte reabsorption, directly increasing excretion of sodium and chloride in approximately equivalent amounts. The diuretic action of hydrochlorothiazide reduces plasma volume, increases plasma renin activity and increases aldosterone secretion, with consequent increases in urinary potassium and bicarbonate loss, and decreases in serum potassium. The renin-aldosterone link is mediated by angiotensin II and therefore coadministration of an angiotensin II receptor antagonist tends to reverse the potassium loss associated with thiazide diuretics. With hydrochlorothiazide, onset of diuresis occurs at about 2 hours and peak effect occurs at about 4 hours post-dose, whilst the action persists for approximately 6-12 hours.

Reported epidemiological studies have shown that long-term treatment with hydrochlorothiazide monotherapy reduces the risk of cardiovascular mortality and morbidity.

#### Results of reported Clinical Studies

In a 12-week, double-blind, randomised, parallel-group study in 2492 patients (67% Caucasian patients), treatment with olmesartan plus amlodipine plus hydrochlorothiazide 40 mg/10 mg/25 mg resulted in significantly greater reductions in diastolic and systolic blood pressures than treatment with either of the corresponding dual combinations, olmesartan medoxomil 40 mg plus amlodipine 10 mg, olmesartan medoxomil 40 mg plus hydrochlorothiazide 25 mg and amlodipine 10 mg plus hydrochlorothiazide 25 mg, respectively.

The additional blood pressure lowering effect from olmesartan plus amlodipine plus hydrochlorothiazide 40 mg/10 mg/25 mg compared to the analogous dual combinations was between -3.8 and -6.7 mmHg for seated diastolic and between -7.1 and -9.6 mmHg for seated systolic blood pressure and occurred within the first 2 weeks.

The proportions of patients reaching blood pressure goal (< 140/90 mmHg for non-diabetic patients and < 130/80 mmHg for diabetic patients) at week 12 ranged from 34.9% to 46.6% for the dual combination treatment groups compared to 64.3% for olmesartan plus amlodipine plus hydrochlorothiazide 40 mg/10 mg/25 mg.

In a reported second double-blind, randomised, parallel-group study in 2690 patients (99.9% Caucasian patients), treatment with olmesartan plus amlodipine plus hydrochlorothiazide (20 mg/5 mg/12.5 mg, 40 mg/5 mg/12.5 mg, 40 mg/5 mg/25 mg, 40 mg/10 mg/12.5 mg, 40 mg/10 mg/25 mg) resulted in significantly greater reductions in diastolic and systolic blood pressure compared to the corresponding dual combinations, olmesartan medoxomil 20 mg plus

amlodipine 5 mg, olmesartan medoxomil 40 mg plus 5 mg amlodipine and olmesartan medoxomil 40 mg plus 10 mg amlodipine, respectively, after 10 weeks of treatment.

The additional blood pressure lowering effect from triple combinations compared to the corresponding dual combinations was between -1.3 and -1.9 mmHg for seated diastolic and between -2.7 and -4.9 mmHg for seated systolic blood pressure.

The proportions of patients reaching blood pressure goal (< 140/90 mmHg for non-diabetic patients and < 130/80 mmHg for diabetic patients) at week 10 ranged from 42.7% to 49.6% for the dual combination treatment groups compared to 52.4% to 58.8% for olmesartan plus amlodipine plus hydrochlorothiazide.

In a reported randomised, double-blind, add-on study in 808 patients (99.9 % Caucasian patients) not adequately controlled after 8-weeks therapy with olmesartan medoxomil 40 mg plus amlodipine 10 mg dual combination treatment with olmesartan plus amlodipine plus hydrochlorothiazide resulted in numerically additional seated blood pressure reduction of 1.8/-1.0 mmHg when treated with olmesartan plus amlodipine plus hydrochlorothiazide 40 mg/10 mg/12.5 mg and a statistically significant additional seated blood pressure reduction of -3.6/-2.8 mmHg when treated with olmesartan plus amlodipine plus hydrochlorothiazide 40 mg/10 mg/25 mg compared to the olmesartan medoxomil 40 mg plus amlodipine 10 mg dual combination.

Treatment with olmesartan plus amlodipine plus hydrochlorothiazide 40 mg/10 mg/25 mg triple-combination therapy resulted in a statistically significantly greater percentage of subjects reaching their blood pressure goal compared to olmesartan medoxomil 40 mg plus amlodipine 10 mg dual combination therapy (41.3% vs. 24.2%); while the treatment with olmesartan plus amlodipine plus hydrochlorothiazide 40 mg/10 mg/12.5 mg triple-combination therapy resulted in a numerically greater percentage of subjects reaching their blood pressure goal compared to olmesartan medoxomil 40 mg plus amlodipine 10 mg dual combination therapy (29.5% vs. 24.2%) in subjects not adequately controlled on dual-combination therapy.

The antihypertensive effect of olmesartan plus amlodipine plus hydrochlorothiazide was similar irrespective of age and gender, and was similar in patients with and without diabetes.

#### Other information:

Two reported large randomised, controlled trials (ONTARGET (ONgoing Telmisartan Alone and in combination with Ramipril Global Endpoint Trial) and VA NEPHRON-D (The Veterans Affairs Nephropathy in Diabetes)) have examined the use of the combination of an ACE-inhibitor with an angiotensin II receptor blocker.

ONTARGET was a study conducted in patients with a history of cardiovascular or cerebrovascular disease, or type 2 diabetes mellitus accompanied by evidence of end-organ damage. VA NEPHRON-D was a study in patients with type 2 diabetes mellitus and diabetic nephropathy.

These studies have shown no significant beneficial effect on renal and/or cardiovascular outcomes and mortality, while an increased risk of hyperkalaemia, acute kidney injury and/or hypotension as compared to monotherapy was observed. Given their similar pharmacodynamics properties, these results are also relevant for other ACE-inhibitors and angiotensin II receptor blockers.

ACE-inhibitors and angiotensin II receptor blockers should therefore not be used concomitantly in patients with diabetic nephropathy.

ALTITUDE (Aliskiren Trial in Type 2 Diabetes Using Cardiovascular and Renal Disease Endpoints) was a reported study designed to test the benefit of adding aliskiren to a standard therapy of an ACE-inhibitor or an angiotensin II receptor blocker in patients with type 2 diabetes mellitus and chronic kidney disease, cardiovascular disease, or both. The study was terminated early because of an increased risk of adverse outcomes. Cardiovascular death and stroke were both numerically more frequent in the aliskiren group than in the placebo group and adverse events and serious adverse events of interest (hyperkalaemia, hypotension and renal dysfunction) were more frequently reported in the aliskiren group than in the placebo group.

#### Non-melanoma skin cancer:

Based on available data from reported epidemiological studies, cumulative dose-dependent association between HCTZ and NMSC has been observed. One study included a population comprised of 71,533 cases of BCC and of 8,629 cases of SCC matched to 1,430,833 and 172,462 population controls, respectively. High HCTZ use ( $\geq 50,000$  mg cumulative) was associated with an adjusted OR of 1.29 (95% CI: 1.23-1.35) for BCC and 3.98 (95% CI: 3.68-4.31) for SCC. A clear cumulative dose response relationship was observed for both BCC and SCC. Another study showed a possible association between lip cancer (SCC) and exposure to HCTZ: 633 cases of lip-cancer were matched with 63,067 population controls, using a risk-set sampling strategy. A cumulative dose-response relationship was demonstrated with an adjusted OR 2.1 (95% CI: 1.7-2.6) increasing to OR 3.9 (3.0-4.9) for high use ( $\sim 25,000$  mg) and OR 7.7 (5.7-10.5) for the highest cumulative dose ( $\sim 100,000$  mg) (see also section 4.4).

Concomitant administration of olmesartan medoxomil, amlodipine and hydrochlorothiazide had no clinically-relevant effects on the pharmacokinetics of either component in healthy subjects.

Following oral administration of olmesartan plus amlodipine plus hydrochlorothiazide in normal healthy adults, peak plasma concentrations of olmesartan, amlodipine and hydrochlorothiazide are reached in about 1.5 to 3 hours, 6 to 8 hours, and 1.5 to 2 hours, respectively. The rate and extent of absorption of olmesartan medoxomil, amlodipine and hydrochlorothiazide from olmesartan plus amlodipine plus hydrochlorothiazide are the same as when administered as a dual-fixed combination of olmesartan medoxomil and amlodipine together with a hydrochlorothiazide single-component tablet or when administered as a dual-fixed combination of olmesartan medoxomil and hydrochlorothiazide together with an amlodipine single-component tablet with the same dosages. Food does not affect the bioavailability of olmesartan plus amlodipine plus hydrochlorothiazide.

### **5.3 Pharmacokinetic properties**

#### Olmesartan medoxomil:

##### *Absorption and distribution:*

Olmesartan medoxomil is a prodrug. It is rapidly converted to the pharmacologically active metabolite, olmesartan, by esterases in the gut mucosa and in portal blood during absorption from the gastrointestinal tract. No intact olmesartan medoxomil or intact side chain medoxomil



moiety have been detected in plasma or excreta. The mean absolute bioavailability of olmesartan from a tablet formulation was 25.6%.

The mean peak plasma concentration (C<sub>max</sub>) of olmesartan is reached within about 2 hours after oral dosing with olmesartan medoxomil, and olmesartan plasma concentrations increase approximately linearly with increasing single oral doses up to about 80 mg.

Food had minimal effect on the bioavailability of olmesartan and therefore olmesartan medoxomil may be administered with or without food.

No clinically relevant gender-related differences in the pharmacokinetics of olmesartan have been observed.

Olmesartan is highly bound to plasma protein (99.7%), but the potential for clinically significant protein binding displacement interactions between olmesartan and other highly bound co-administered active substances is low (as confirmed by the lack of a clinically significant interaction between olmesartan medoxomil and warfarin). The binding of olmesartan to blood cells is negligible. The mean volume of distribution after intravenous dosing is low (16 – 29 L).

#### *Biotransformation and elimination:*

Total plasma clearance of olmesartan was typically 1.3 L/h (CV 19%) and was relatively slow compared to hepatic blood flow (ca 90 L/h). Following a single oral dose of <sup>14</sup>C-labelled olmesartan medoxomil, 10 - 16% of the administered radioactivity was excreted in the urine (the vast majority within 24 hours of dose administration) and the remainder of the recovered radioactivity was excreted in the faeces. Based on the systemic availability of 25.6%, it can be calculated that absorbed olmesartan is cleared by both renal excretion (ca 40%) and hepatobiliary excretion (ca 60%). All recovered radioactivity was identified as olmesartan. No other significant metabolite was detected.

Enterohepatic recycling of olmesartan is minimal. Since a large proportion of olmesartan is excreted via the biliary route, use in patients with biliary obstruction is contraindicated.

The terminal elimination half-life of olmesartan varied between 10 and 15 hours after multiple oral dosing. Steady state was reached after 2-5 days of dosing and no further accumulation was evident after 14 days of repeated dosing. Renal clearance was approximately 0.5 – 0.7 L/h and was independent of dose.

#### *Drug interactions:*

Bile acid sequestering agent colesevelam:

Concomitant administration of 40 mg olmesartan medoxomil and 3750 mg colesevelam hydrochloride in healthy subjects resulted in 28% reduction in C<sub>max</sub> and 39% reduction in AUC of olmesartan. Lesser effects, 4% and 15% reduction in C<sub>max</sub> and AUC respectively, were observed when olmesartan medoxomil was administered 4 hours prior to colesevelam hydrochloride. Elimination half-life of olmesartan was reduced by 50 – 52% irrespectively of whether administered concomitantly or 4 hours prior to colesevelam hydrochloride.

#### Amlodipine:

*Absorption and distribution:*

After oral administration of therapeutic doses, amlodipine is well absorbed with peak blood levels between 6-12 hours post dose. Absolute bioavailability has been estimated to be between 64 and 80%. The volume of distribution is approximately 21 l/kg. In vitro studies have shown that approximately 97.5% of circulating amlodipine is bound to plasma proteins.

The absorption of amlodipine is unaffected by the concomitant intake of food

*Biotransformation and elimination:*

The terminal plasma elimination half-life is about 35-50 hours and is consistent with once daily dosing.

Amlodipine is extensively metabolised by the liver to inactive metabolites with 10% of the parent compound and 60% of metabolites excreted in the urine.

Hydrochlorothiazide:

*Absorption and distribution:*

Following oral administration of olmesartan medoxomil and hydrochlorothiazide in combination, the median time to peak concentrations of hydrochlorothiazide was 1.5 to 2 hours after dosing. Hydrochlorothiazide is 68% protein bound in the plasma and its apparent volume of distribution is 0.83 – 1.14 L/kg.

*Biotransformation and elimination:*

Hydrochlorothiazide is not metabolised in man and is excreted almost entirely as unchanged active substance in urine. About 60% of the oral dose is eliminated as unchanged active substance within 48 hours. Renal clearance is about 250 – 300 mL/min. The terminal elimination half-life of hydrochlorothiazide is 10 – 15 hours.

**Pharmacokinetics in special populations**

*Paediatric Population:*

The European Medicines Agency has waived the obligation to submit the results of studies with olmesartan plus amlodipine plus hydrochlorothiazide in all subsets of the paediatric population in essential hypertension.

*Elderly (age 65 years or over):*

In hypertensive patients, the olmesartan AUC at steady state was increased by ca 35% in elderly people (65 – 75 years old) and by ca 44% in very elderly people ( $\geq$  75 years old) compared with the younger age group.

This may be at least in part related to a mean decrease in renal function in this group of patients. The recommended dosage regimen for elderly people is, however, the same, although caution should be exercised when increasing the dosage.

The time to reach peak plasma concentrations of amlodipine is similar in elderly and younger subjects. Amlodipine clearance tends to be decreased with resulting increases in AUC and elimination half-life in elderly people. Increases in AUC and elimination half-life in patients with congestive heart failure were as expected for the patient age group in this study.

Limited data suggest that the systemic clearance of hydrochlorothiazide is reduced in both healthy and hypertensive elderly people compared to young healthy volunteers.

### *Renal impairment:*

In renally impaired patients, the olmesartan AUC at steady state increased by 62%, 82% and 179% in patients with mild, moderate and severe renal impairment, respectively, compared to healthy controls. The pharmacokinetics of olmesartan medoxomil in patients undergoing haemodialysis has not been studied.

Amlodipine is extensively metabolised to inactive metabolites. Ten percent of the substance is excreted unchanged in the urine. Changes in amlodipine plasma concentration are not correlated with the degree of renal impairment. In these patients, amlodipine may be administered at the normal dosage. Amlodipine is not dialysable.

The half-life of hydrochlorothiazide is prolonged in patients with impaired renal function.

### *Hepatic impairment:*

After single oral administration, olmesartan AUC values are 6% and 65% higher in mildly and moderately hepatically impaired patients, respectively, than in their corresponding matched healthy controls. The unbound fraction of olmesartan at 2 hours post-dose in healthy subjects, in patients with mild hepatic impairment and in patients with moderate hepatic impairment is 0.26%, 0.34% and 0.41%, respectively.

Following repeated dosing in patients with moderate hepatic impairment, olmesartan mean AUC is again about 65% higher than in matched healthy controls. Olmesartan mean C<sub>max</sub> values are similar in hepatically-impaired and healthy subjects. Olmesartan medoxomil has not been evaluated in patients with severe hepatic impairment.

Very limited clinical data are available regarding amlodipine administration in patients with hepatic impairment. The clearance of amlodipine is decreased and the half-life is prolonged in patients with impaired hepatic function, resulting in an increase in AUC of about 40% – 60%.

Hepatic impairment does not significantly influence the pharmacokinetics of hydrochlorothiazide.

## **6. Nonclinical properties**

### **6.1 Animal Toxicology or Pharmacology**

#### *Olmesartan medoxomil/ Amlodipine /Hydrochlorothiazide combination*

Repeated dose toxicity study in rats demonstrated that the combined administration of olmesartan medoxomil, amlodipine and hydrochlorothiazide neither augmented any of the previously reported and existing toxicities of the individual agents, nor induced any new toxicity, and no toxicologically synergistic effects were observed.

No additional mutagenicity, carcinogenicity, and reproductive toxicity studies for olmesartan medoxomil/ amlodipine /hydrochlorothiazide combination have been conducted based on the wellunderstood safety profile of the individual active ingredients.

#### *Olmesartan medoxomil*

In chronic toxicity studies in rats and dogs, olmesartan medoxomil showed similar effects to other AT<sub>1</sub> receptor antagonists and ACE inhibitors: raised blood urea (BUN) and creatinine; reduction in heart weight; reduction of red cell parameters (erythrocytes, haemoglobin,

haematocrit); histological indications of renal damage (regenerative lesions of the renal epithelium, thickening of the basal membrane, dilatation of the tubules). These adverse effects caused by the pharmacological action of olmesartan medoxomil have also occurred in preclinical trials on other AT1 receptor antagonists and ACE inhibitors and can be reduced by simultaneous oral administration of sodium chloride.

Like other AT1 receptor antagonists olmesartan medoxomil was found to increase the incidence of chromosome breaks in cell cultures in vitro, but not in vivo. The overall data of a comprehensive genotoxicity testing programme suggest that olmesartan is very unlikely to exert genotoxic effects under conditions of clinical use.

Olmesartan medoxomil was not carcinogenic in rats or transgenic mice.

In reproductive studies in rats, olmesartan medoxomil did not affect fertility and there was no evidence of a teratogenic effect. In common with other angiotensin II antagonists, survival of offspring was reduced and pelvic dilatation of the kidney was seen after exposure of the dams in late pregnancy and lactation. In rabbits there was no indication of a fetotoxic effect.

### *Amlodipine*

#### Reproductive toxicology

Reproductive studies in rats and mice have shown delayed date of delivery, prolonged duration of labour and decreased pup survival at dosages approximately 50 times greater than the maximum recommended dosage for humans based on mg/kg.

#### Impairment of fertility

There was no effect on the fertility of rats treated with amlodipine (males for 64 days and females 14 days prior to mating) at doses up to 10 mg/kg/day (8 times\* the maximum recommended human dose of 10 mg on a mg/m<sup>2</sup> basis). In another rat study in which male rats were treated with amlodipine besilate for 30 days at a dose comparable with the human dose based on mg/kg, decreased plasma folliclestimulating hormone and testosterone were found as well as decreases in sperm density and in the number of mature spermatids and Sertoli cells.

#### Carcinogenesis, mutagenesis

Rats and mice treated with amlodipine in the diet for two years, at concentrations calculated to provide daily dosage levels of 0.5, 1.25, and 2.5 mg/kg/day showed no evidence of carcinogenicity. The highest dose (for mice, similar to, and for rats twice\* the maximum recommended clinical dose of 10 mg on a mg/m<sup>2</sup> basis) was close to the maximum tolerated dose for mice but not for rats.

Mutagenicity studies revealed no drug related effects at either the gene or chromosome levels.

### *Hydrochlorothiazide*

Studies with hydrochlorothiazide have shown equivocal evidence for a genotoxic or carcinogenic effect in some experimental models.

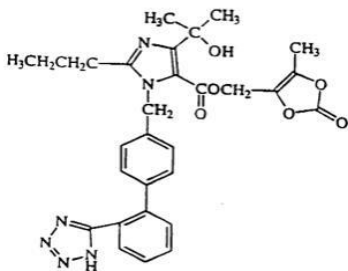
However, the extensive human experience with hydrochlorothiazide has failed to show an association between its use and an increase in neoplasma.

## 7. Description

### Olmesartan Medoxomil

Olmesartan Medoxomil, a prodrug, is hydrolyzed to olmesartan during absorption from the gastrointestinal tract. Olmesartan medoxomil is chemically described as 2,3-dihydroxy-2-butenyl

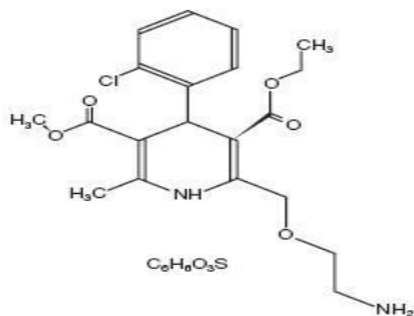
4-(1-hydroxy-1-methylethyl)-2-propyl-1-[p-(o-1H-tetrazol-5-ylphenyl)benzyl]imidazole-5-carboxylate, cyclic 2,3-carbonate. Its empirical formula is  $C_{29}H_{30}N_6O_6$  and molecular weight is 558.6. The structural formula for olmesartan medoxomil is:



Olmesartan Medoxomil is a white or almost white crystalline powder which is slightly soluble in ethanol 95% and practically insoluble in heptane and water.

### Amlodipine Besilate

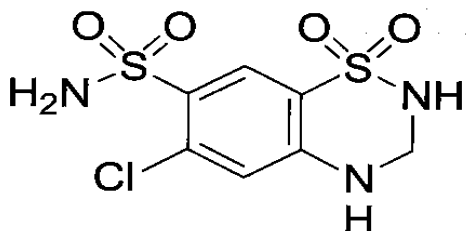
Amlodipine besilate is chemically described as 3-Ethyl-5-methyl ( $\pm$ )-2-[(2-aminoethoxy)methyl]-4-(2-chlorophenyl)-1,4-dihydro-6-methyl-3,5-pyridinedicarboxylate, monobenzenesulphonate. Its molecular formula is  $C_{20}H_{25}ClN_2O_5 \cdot C_6H_6O_3S$ , and its structural formula is:



Amlodipine besilate is a white or almost white powder with a molecular weight of 567.1. It is freely soluble in methanol; sparingly soluble in ethanol (95 percent); slightly soluble in 2-propanol and in water.

## **Hydrochlorothiazide**

Hydrochlorothiazide is 6-chloro-3,4-dihydro-2H-1,2,4-benzothiadiazine-7-sulphonamide 1,1-dioxide. Its molecular formula is  $C_7H_8ClN_3O_4S_2$ , Molecular weight 297.7 and its structural formula is:



Hydrochlorothiazide is white or almost white, crystalline powder odourless. Soluble in acetone; sparingly soluble in ethanol (95 per cent); very slightly soluble in water. It dissolves in dilute solutions of alkali hydroxides.

### **8. Pharmaceutical particulars**

#### **8.1 Incompatibilities**

None stated

#### **8.2 Shelf-life**

Do not use later than date of expiry

#### **8.3 Packaging information**

TRI-OLMETOR is available in Blister Strip of 10 Tablets.

#### **8.4 Storage and handing instructions**

Store at a temperature not exceeding 30° c, protected from light and moisture.

Keep all tablets out of reach of children.

## 9. Patient counselling information

### Package leaflet: Information for the user

#### TRI-OLMETOR

**Read all of this leaflet carefully before you start taking this medicine because it contains important information for you.**

- Keep this leaflet. You may need to read it again.
- If you have any further questions, ask your doctor or pharmacist.
- This medicine has been prescribed for you only. Do not pass it on to others. It may harm them, even if their signs of illness are the same as yours.
- If you get any side effects, talk to your doctor or pharmacist. This includes any possible side effects not listed in this leaflet.

#### **What is in this leaflet?**

9.1. What TRI-OLMETOR is and what it is used for

9.2. What you need to know before you take TRI-OLMETOR

9.3. How to take TRI-OLMETOR

9.4. Possible side effects

9.5. How to store TRI-OLMETOR

9.6. Contents of the pack and other information

#### **9.1 What TRI-OLMETOR is and what it is used for**

TRI-OLMETOR contains three active substances called olmesartan medoxomil, amlodipine (as amlodipine besilate) and hydrochlorothiazide. All three substances help to control high blood pressure.

- Olmesartan medoxomil belongs to a group of medicines called “angiotensin-II receptor antagonists”, which lowers blood pressure by relaxing the blood vessels.
- Amlodipine belongs to a group of substances called “calcium channel blockers”. Amlodipine also lowers blood pressure by relaxing blood vessels.
- Hydrochlorothiazide is one of a group of medicines called thiazide diuretics (“water tablets”). It lowers blood pressure by helping the body to get rid of extra fluid by making your kidneys produce more urine.

The actions of these substances contribute to decrease your blood pressure.

#### **9.2 What you need to know before you take TRI-OLMETOR**

##### **Do not take TRI-OLMETOR if:**

- you are allergic to olmesartan medoxomil, to amlodipine or a special group of calcium channel blockers (the dihydropyridines) to hydrochlorothiazide or to substances similar to hydrochlorothiazide (sulfonamides) or to any of the other ingredients of this medicine. If you think you may be allergic talk to your doctor before taking TRI-OLMETOR.

- you have severe kidney problems.
- you have diabetes or impaired kidney function and you are treated with a blood pressure lowering medicine containing aliskiren.
- you have low potassium, low sodium, high calcium or high uric acid (with symptoms of gout or kidney stones) levels in your blood that have not got better when treated.
- you are more than 3 months pregnant. (It is also better to avoid TRI-OLMETOR in early pregnancy - see section “Pregnancy and breast-feeding”.)
- you have severe liver problems, if bile secretion is impaired or drainage of bile from the gall bladder is blocked (e. g. by gallstones), or if you are jaundiced (yellowing of the skin and eyes).
- you have a poor blood supply to your tissues with symptoms such as low blood pressure, low pulse, fast heartbeat or shock (including cardiogenic shock, which means shock due to severe heart troubles).
- you have very low blood pressure.
- the blood flow from your heart is slow or blocked. This may happen if the blood vessel or valve that takes blood away from your heart becomes narrow (aortic stenosis).
- you have a low heart output after a heart attack (acute myocardial infarction). Low heart output may make you feel short of breath or have swelling in your feet and ankles.

Do not take TRI-OLMETOR if any of the above applies to you.

### **Warnings and precautions**

#### **Talk to your doctor or pharmacist before using TRI-OLMETOR.**

**Tell your doctor** if you are taking any of the following medicines used to treat high blood pressure:

- an ACE-inhibitor (for example enalapril, lisinopril, ramipril), in particular if you have diabetes-related kidney problems,
- aliskiren.

Your doctor may check your kidney function, blood pressure, and the amount of electrolytes (e.g. potassium) in your blood at regular intervals.

See also information under the heading “Do not take TRI-OLMETOR if:”

**Tell your doctor** if you have any of the following health problems:

- Kidney problems or a kidney transplant.
- Liver disease.
- Heart failure or problems with your heart valves or heart muscle.
- Severe vomiting, diarrhoea, treatment with high doses of “water tablets” (diuretics) or if you are on a low salt diet.
- Increased levels of potassium in your blood.



- Problems with your adrenal glands (hormone-producing glands on top of the kidneys).
- Diabetes.
- Lupus erythematosus (an autoimmune disease).
- Allergies or asthma.
- Skin reactions such as sunburn or rash after being in the sun or using a sunbed.
- If you have had skin cancer or if you develop an unexpected skin lesion during the treatment. Treatment with hydrochlorothiazide, particularly long term use with high doses, may increase the risk of some types of skin and lip cancer (non-melanoma skin cancer). Protect your skin from sun exposure and UV rays while taking TRI-OLMETOR.

**Contact your doctor** if you experience any of the following symptoms:

- diarrhoea that is severe, persistent and causes substantial weight loss. Your doctor may evaluate your symptoms and decide on how to continue your blood pressure medication.
- decrease in vision or eye pain. These could be symptoms of fluid accumulation in the vascular layer of the eye (choroidal effusion) or an increase of pressure in your eye and can happen within hours to weeks of taking TRI-OLMETOR. This can lead to permanent vision impairment, if not treated.

As with any medicine, which reduces blood pressure, an excessive drop in blood pressure in patients with blood flow disturbances of the heart or brain could lead to a heart attack or stroke. Your doctor will therefore check your blood pressure carefully.

TRI-OLMETOR may cause a rise in blood fat levels and uric acid levels (the cause of gout – painful swelling of the joints). Your doctor will probably want to do a blood test from time to time to check these.

It may change the levels of certain chemicals in your blood called electrolytes. Your doctor will probably want to do a blood test from time to time to check these. Signs of electrolyte changes are: thirst, dryness of the mouth, muscle pain or cramps, tired muscles, low blood pressure (hypotension), feeling weak, sluggish, tired, sleepy or restless, nausea, vomiting, less need to pass urine, a rapid heart rate. **Tell your doctor if you notice these symptoms.**

If you are due to have tests for parathyroid function you should stop taking TRI-OLMETOR before these tests are carried out.

You must tell your doctor if you think that you are (or might become) pregnant. TRI-OLMETOR is not recommended in early pregnancy, and must not be taken if you are more than 3 months pregnant, as it may cause serious harm to your baby if used at that stage (see section “Pregnancy and breast-feeding”).

### **Children and adolescents (under 18)**

TRI-OLMETOR is not recommended for children and adolescents under the age of 18.

### **Other medicines and TRI-OLMETOR**

Tell your doctor or pharmacist if you are taking, have recently taken or might take any of the following:

- **Other blood pressure lowering medicines**, as the effect of TRI-OLMETOR can be increased. Your doctor may need to change your dose and/or to take other precautions:

If you are taking an ACE-inhibitor or aliskiren (see also information under the headings “Do not take TRI-OLMETOR if:” and “Warnings and precautions”).

- **Lithium** (a medicine used to treat mood swings and some types of depression), used at the same time as TRI-OLMETOR may increase the toxicity of lithium. If you have to take lithium your doctor will measure your lithium blood levels.
- **Diltiazem, verapamil**, used for heart rhythm problems and high blood pressure.
- **Rifampicin, erythromycin, clarithromycin, tetracyclines or sparfloxacin**, antibiotics used for tuberculosis and other infections.
- **St. John’s wort** (*Hypericum perforatum*), a herbal remedy for treatment of depression.
- **Cisapride**, used to increase food movement in the stomach and gut.
- **Diphemanil**, used to treat a slow heartbeat or reduce sweating.
- **Halofantrine**, used for malaria.
- **Vincamine IV**, used to improve circulation to the nervous system.
- **Amantadine**, used for Parkinson’s disease.
- **Potassium supplements, salt substitutes containing potassium, “water tablets”** (diuretics), **heparin** (for thinning the blood and prevention of blood clots), ACE inhibitors (for blood pressure lowering), laxatives, steroids, adrenocorticotrophic hormone (ACTH), carbenoxolone (a medicine used to treat mouth and stomach ulcers), penicillin G sodium (also called benzylpenicillin sodium, an antibiotic), certain pain killers such as acetylsalicylic acid (“aspirin”) or salicylates. Using these medicines at the same time as TRI-OLMETOR may alter the levels of potassium in your blood.
- **Non-Steroidal Anti-Inflammatory Drugs** (NSAIDs, medicines used to relieve pain, swelling and other symptoms of inflammation, including arthritis), used at the same time as TRI-OLMETOR may increase the risk of kidney failure. The effect of TRI-OLMETOR can be decreased by NSAIDs. In case of high dosages of salicylate the toxic effect on central nervous system may be increased.
- **Sleeping tablets, sedatives and anti-depressant medicines** as using these medicines together with TRI-OLMETOR may cause a sudden drop in blood pressure when standing up.
- **Colesevelam hydrochloride**, a drug that lowers the level of cholesterol in your blood, as the effect of TRI-OLMETOR may be decreased. Your doctor may advise you to take TRI-OLMETOR at least 4 hours before colesevelam hydrochloride.
- **Certain antacids** (indigestion or heartburn remedies) as the effect of TRI-OLMETOR can be slightly decreased.
- **Certain muscle relaxing medicines** such as baclofen and tubocurarine.
- **Anticholinergic agents** such as atropine and biperiden.

- **Calcium supplements.**
- **Dantrolene** (infusion for severe body temperature abnormalities).
- **Simvastatin**, used to lower levels of cholesterol and fats (triglycerides) in the blood.
- **Medicines used to control your body's immune response** (such as tacrolimus, cyclosporine), enabling your body to accept the transplanted organ.

Also, tell your doctor or pharmacist if you are taking, have recently taken or might take any of the following medicines to:

- **Treat certain mental health problems** such as thioridazine, chlorpromazine, levomepromazine, trifluoperazine, cyamemazine, sulpiride, amisulpride, pimozide, sultopride, tiapride, droperidol or haloperidol.
- **Treat low blood sugar** (e. g. diazoxide) or **high blood pressure** (e. g. beta-blockers, methyldopa) as TRI-OLMETOR can affect how these drugs work.
- **Treat heart rhythm problems** such as mizolastine, pentamidine, terfenadine, dofetilide, ibutilide or erythromycin injections.
- **Treat HIV/AIDS** (e. g. ritonavir, indinavir, nelfinavir)
- **Treat fungal infections** (e. g. ketoconazole, itraconazole, amphotericin).
- **Treat heart problems** such as quinidine, hydroquinidine, disopyramide, amiodarone, sotalol, bepridil or digitalis.
- **Treat cancers** such as amifostine, cyclophosphamide or methotrexate.
- **Increase blood pressure and slow heart rate** such as noradrenaline.
- **Treat gout** such as probenecid, sulfinpyrazone and allopurinol.
- **Lower blood fat levels** such as colestyramine and colestipol.
- **Lower blood sugar** such as metformin or insulin.

Tell your doctor or pharmacist if you are taking, have recently taken or might take any other medicines.

### **TRI-OLMETOR with food and drink**

TRI-OLMETOR can be taken with or without food.

Grapefruit juice and grapefruit should not be consumed by people who are taking TRI-OLMETOR. This is because grapefruit and grapefruit juice can lead to an increase in the blood levels of the active ingredient amlodipine, which can cause an unpredictable increase in the blood pressure lowering effect of TRI-OLMETOR.

Take care when drinking alcohol while you are taking TRI-OLMETOR as some people feel faint or dizzy. If this happens to you, do not drink any alcohol.

## **Elderly**

If you are over 65 years of age your doctor will regularly check your blood pressure at any dose increase, to make sure that your blood pressure does not become too low.

## **Pregnancy and breast-feeding**

### **Pregnancy**

You must tell your doctor if you think that you are (or might become) pregnant. Your doctor will normally advise you to stop taking TRI-OLMETOR before you become pregnant or as soon as you know you are pregnant and will advise you to take another medicine instead of TRI-OLMETOR. TRI-OLMETOR is not recommended during pregnancy, and must not be taken when more than 3 months pregnant as it may cause serious harm to your baby if used after the third month of pregnancy.

If you become pregnant during therapy with TRI-OLMETOR please inform and see your physician without delay.

### **Breast-feeding**

Tell your doctor if you are breast-feeding or about to start breast-feeding. Amlodipine and hydrochlorothiazide have been shown to pass into breast milk in small amounts. TRI-OLMETOR is not recommended for mothers, who are breast-feeding, and your doctor may choose another treatment for you if you wish to breast-feed.

If you are pregnant or breast-feeding, think you may be pregnant or are planning to have a baby, ask your doctor or pharmacist for advice before taking this medicine.

### **Driving and using machines**

You may feel sleepy, sick or dizzy or get a headache while being treated for your high blood pressure. If this happens do not drive or use machines until the symptoms wear off. Ask your doctor for advice.

## **9.3 How to take TRI-OLMETOR**

Always take this medicine exactly as your doctor or pharmacist has told you. Check with your doctor or pharmacist if you are not sure.

- The recommended dose of TRI-OLMETOR is one tablet per day.
- The tablet can be taken with or without food. Swallow the tablet with some fluid (such as a glass of water). The tablet should not be chewed. Do not take the tablet with grapefruit juice.
- If possible, take your daily dose at the same time each day, for example at breakfast time

### **If you take more TRI-OLMETOR than you should**

If you take more tablets than you should you may experience low blood pressure with symptoms such as dizziness, fast or slow heartbeat.

If you take more tablets than you should or if a child accidentally swallows some go to your doctor or nearest emergency department immediately and take your medicine pack or this leaflet with you.

### **If you forget to take TRI-OLMETOR**

If you forget to take a dose take your normal dose the following day as usual. Do not take a double dose to make up for a forgotten dose.

### **If you stop taking TRI-OLMETOR**

It is important to continue to take TRI-OLMETOR unless your doctor tells you to stop.

If you have any further questions on the use of this medicine, ask your doctor or pharmacist.

## **9.4 Possible side effects**

Like all medicines, this medicine can cause side effects, although not everybody gets them. If side effects do occur they are often mild and do not require treatment to be stopped.

### **Although not many people may get them, the following two side effects can be serious:**

Allergic reactions with swelling of the face, mouth and/or larynx (voice box) together with itching and rash may occur during treatment with TRI-OLMETOR. **If this happens stop taking TRI-OLMETOR and contact your doctor immediately.**

Severe light-headedness or fainting because TRI-OLMETOR can cause the blood pressure to fall too low in susceptible individuals. **If this happens stop taking TRI-OLMETOR, contact your doctor immediately and lay down flat.**

TRI-OLMETOR is a combination of three active substances. The following information firstly gives the other side effects reported so far with the combination TRI-OLMETOR (besides those already mentioned above) and, secondly, those side effects, which are known for each of the separate substances or when two substances are given together.

To give you an idea of how many patients might get side effects, they have been listed as common, uncommon, rare and very rare.

### **These are the other side effects known about so far with TRI-OLMETOR:**

If these side effects occur they are often mild and **you do not need to stop your treatment.**

#### **Common**

(may affect less than 1 in 10 people)

Upper respiratory tract infection; sore throat and nose; urinary tract infection; dizziness; headache; awareness of heartbeat; low blood pressure; nausea; diarrhoea; constipation; cramps; joint swelling; feeling more of an urge to pass urine; weakness; ankle swelling; tiredness; abnormal laboratory values.

#### **Uncommon**

(may affect less than 1 in 100 people)

Dizziness on standing up; vertigo; fast heartbeat; feeling faint; redness and warm feeling of the face; cough; dry mouth; muscular weakness; inability to get or maintain an erection.

**These are the side effects, which are known for each of the separate substances or when two substances are given together:**

They may be side effects for TRI-OLMETOR, even if they have not been seen so far with TRI-OLMETOR.

**Very common**

(may affect more than 1 in 10 people)

Oedema (fluid retention)

**Common**

(may affect less than 1 in 10 people)

Bronchitis; stomach and gut infection; vomiting; increased blood sugar; sugar in urine; confusion; feeling sleepy; visual disturbance (including double vision and blurred vision); runny or stuffy nose; sore throat; difficult breathing; cough; abdominal pain; heartburn; stomach discomfort; flatulence; pain in the joints or bones; back pain; skeletal pain; blood in the urine; flu-like symptoms; chest pain; pain.

**Uncommon**

(may affect less than 1 in 100 people)

Reduced number of a type of blood cells known as platelets, which can result in bruising easily or a prolonged bleeding time; anaphylactic reactions; abnormally reduced appetite (anorexia); problems sleeping; irritability; mood changes including feeling anxious; feeling “down” or depressed; shiver; sleep disturbances; distorted sense of taste; loss of consciousness; reduced sense of touch; tingling sensations; worsening of shortsightedness; ringing in the ears (tinnitus); angina (pain or uncomfortable feeling in the chest, known as angina pectoris); irregular heart beat; rash; loss of hair; allergic inflammation of the skin; redness of skin; purplish spots or patches on the skin due to small haemorrhages (purpura); discolouration of the skin; red itchy bumps (hives); increased sweating; itching; eruption of the skin; skin reactions to light such as sunburn or rash; muscle pain; problems to pass urine; feeling urge to pass urine at night; breast enlargement in men; decreased sexual desire; swelling of the face; feeling unwell; weight increase or decrease; exhaustion.

**Rare**

(may affect less than 1 in 1,000 people)

Swollen and sore salivary glands; reduced number of white cells in the blood, which could increase the risk of infections; low red blood cell count (anaemia); bone marrow damage; restlessness; feeling uninterested (apathy); fits (convulsions); objects you look at appearing yellow; dry eyes; blood clots (thrombosis, embolism); fluid accumulation in the lungs; pneumonia; inflammation of blood vessels and small blood vessels in the skin; inflammation of the pancreas; yellowing of the skin and eyes; acute inflammation of the gall bladder; symptoms of lupus erythematosus such as rash, joint pains and cold hands and fingers; severe skin reactions including intense skin rash, hives, reddening of the skin over your whole body, severe itching, blistering, peeling and swelling of the skin, inflammation of mucous membranes (Stevens Johnson Syndrome, toxic epidermal necrolysis), sometimes life-

threatening; impaired movement; acute kidney failure; non-infectious kidney inflammation; poor kidney function; fever.

### **Very Rare**

(may affect less than 1 in 10,000 people)

High muscle tension; numbness of hands or feet; heart attack; inflammation of the stomach; thickening of the gums; blockage in the gut; inflammation of the liver.

**Not Known** (frequency cannot be estimated from the available data)

Decrease in vision or eye pain (possible signs of fluid accumulation in the vascular layer of the eye (choroidal effusion) or acute angle-closure glaucoma).

Trembling, rigid posture, mask-like face, slow movements and a shuffling, unbalanced walk.

Skin and lip cancer (Non-melanoma skin cancer)

### **Reporting of side effects**

If you get any side effects, talk to your doctor or pharmacist. This includes any possible side effects not listed in this leaflet. You can also report side effects directly via any point of contact of **Torrent Pharma** available at: [https://www.torrentpharma.com/index.php/site/info/adverse\\_event\\_reporting](https://www.torrentpharma.com/index.php/site/info/adverse_event_reporting). By reporting side effects, you can help provide more information on the safety of this medicine.

## **9.5 How to store TRI-OLMETOR**

Store protected from light and moisture, at a temperature not exceeding 30°C.

Keep all tablets out of reach of children.

Do not use this medicine after the expiry date, which is stated on the carton, bottle and blister after EXP.

Do not throw away any medicines via wastewater or household waste. Ask your pharmacist how to throw away medicines you no longer use. These measures will help protect the environment.

## **9.6 Contents of the pack and other information**

### **What TRI-OLMETOR contains**

The active substances are Olmesartan Medoxomil, Amlodipine & Hydrochlorothiazide.

### **TRI-OLMETOR 20**

Each film coated tablet contains:

Olmesartan medoxomil I.P. 20 mg

Amlodipine Besilate I.P.

Equivalent to Amlodipine 5 mg

Hydrochlorothiazide I.P. 12.5 mg

Colours: Red oxide of Iron, Yellow oxide of Iron, Black oxide of iron and Titanium dioxide I.P.

The excipients used are Silicified Microcrystalline Cellu, Croscarmellose Sodium, Starch, Pregel, Colloidal Silicon Dioxide, Magnesium Stearate, Starlac, Talc, Opadry II Pink.

### **TRI-OLMETOR 40**

Each film coated tablet contains:

Olmesartan medoxomil I.P. 40 mg

Amlodipine Besilate I.P.

Equivalent to Amlodipine 5 mg

Hydrochlorothiazide I.P. 12.5 mg

Colours: Yellow oxide of Iron and Titanium dioxide I.P.

The excipients used are Silicified Microcrystalline Cellu, Croscarmellose Sodium, Starch, Pregel, Colloidal Silicon Dioxide, Magnesium Stearate, Starlac, Talc, Opadry II Yellow.

### **10. Details of manufacturer**

TORRENT PHARMACEUTICALS LTD.

Indrad-382 721, Dist. Mehsana, INDIA.

At: 19, 20,21, Sector-6A, I.I.E;

SIDCUL, Ranipur, Haridwar- 249 403.

### **11. Details of permission or licence number with date**

Mfg Lic No. 5/UA/LL/2014 issued on 23.05.2014

### **12. Date of revision**

Mar/2021

### **MARKETED BY**



TORRENT PHARMACEUTICALS LTD.

**IN/TRI-OLMETOR 20, 40 mg/Mar-21/06/PI**