

**For the use of a Registered Medical Practitioner or Hospital or a Laboratory only**

---

---

**CANTHEX CAPSULES**

---

---

**1. Generic Name**

Alpha Lipoic Acid, Biotin, Chromium polynicotinate and Zinc Capsules.

**2. Qualitative and quantitative Composition:**

Each Hard Gelatin Capsule Contains:

Alpha Lipoic Acid IP (as granule form).....200 mg

Biotin IP.....5 mg

Chromium Polynicotinate.....200 mg

Zinc Sulphate Monohydrate IP.....25 mg

The Excipient used are Microcrystalline Cellulose Powder, Croscarmellose Sodium, Colloidal Silicon Dioxide, Polyplasdone, Sodium Lauryl Sulphate and Orange /White colour.

**3. Dosage form and strength**

**Dosage form:** Capsule

**Strength:** Alpha Lipoic Acid (200 mg), Biotin (5 mg), Chromium Polynicotinate (200 mg) and Zinc Sulphate Monohydrate (25 mg).

**4. Clinical particulars**

**4.1 Therapeutic indication**

As a Nutraceuticals it is formulated with specific ingredients to resolve dark patches on neck, armpits, knuckles and other skin folds

**4.2 Posology and method of administration**

**Posology**

As directed by physician

**Method of administration**

Orally

**4.3 Contraindications**

It is contraindicated in persons who have shown hypersensitivity to Alpha Lipoic Acid, Biotin, Chromium polynicotinate, Zinc or any of its ingredients.

**4.4 Special warnings and precautions for use**

Talk to your doctor before taking CANTHEX, if you:have stomach or intestinal ulcers, heart, liver or kidney disease or any other medical conditions

**4.5 Drugs interactions**

No data available.

#### **4.6 Use in special populations (such as pregnant women, lactating women, paediatric patients, etc.)**

##### Pregnancy

It is not known whether Canthex Capsule is safe for use during pregnancy. Hence, it is better to consult your doctor before taking this medicine.

##### Breast-feeding

It is not known whether Canthex Capsule is safe for use while breastfeeding. Hence, it is better to consult your doctor before taking this medicine.

##### Use in children

Canthex Capsule is not recommended for use in children below 18 years as the safety and efficacy data are not established.

#### **4.7 Effects on ability to drive and use machines**

CANTHEX will usually not affect your ability to drive and use machines

#### **4.8 Undesirable effects**

CANTHEX may cause nausea, vomiting, stomach upset, headache, skin rashes or other allergic reactions, although not everybody gets them.

##### **Reporting of adverse reactions**

If you get any side effects, talk to your doctor, pharmacist or nurse. This includes any possible side effects not listed in this leaflet. You can also report side effects directly via any point of contact of Torrent Pharma available at: [https://www.torrentpharma.com/index.php/site/info/adverse\\_event\\_reporting](https://www.torrentpharma.com/index.php/site/info/adverse_event_reporting) By reporting side effects, you can help provide more information on the safety of this medicine.

#### **4.9 Overdose**

No data available.

### **5 Pharmacological properties**

#### **5.1 Pharmacodynamic properties**

NA

#### **5.2 Pharmacokinetic properties**

NA

### **6 Nonclinical properties**

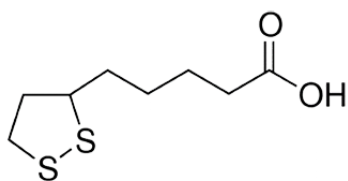
#### **6.1 Animal Toxicology or Pharmacology**

NA

### **7 Description**

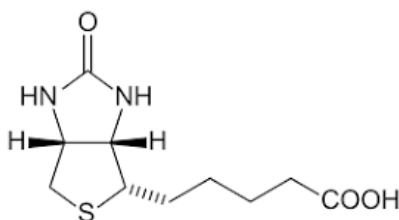
#### **Alpha Lipoic Acid :**

Alpha Lipoic Acid is 1,2-Dithiolane -3-Pentanoic acid; 1,2- Dithiolane-3-valeric acid. The empirical formula is C<sub>8</sub>H<sub>14</sub>O<sub>2</sub>S<sub>2</sub> and its molecular weight is 206.3 g/mol. The structural formula is:



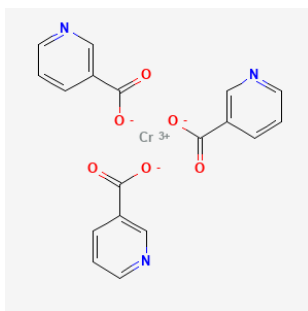
**Biotin:**

Biotin is 1*H*-Thieno [3,4-*d*]imidazole-4-pentanoic acid. Hexahydro-2-oxo-, [3*aS*-(3*aα*, 4*β*,6*aα*)]; (3*aS*,4*S*,6*aR*)- Hexahydro-2-oxo-1*H*-thieno[3,4-*d*]imidazole-4-valeric acid. The empirical formula is C<sub>10</sub>H<sub>16</sub>N<sub>2</sub>O<sub>3</sub>S and its molecular weight is 244.3 g/mol. The structural formula is:



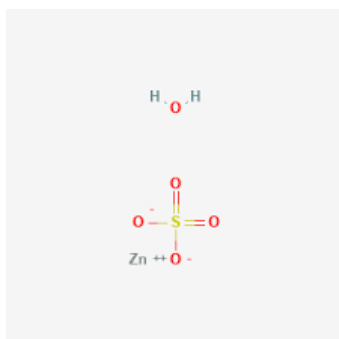
**Chromium Polynicotinate:**

Chromium Polynicotinate is chromium(3+);pyridine-3-carboxylate. The empirical formula is C<sub>18</sub>H<sub>12</sub>CrN<sub>3</sub>O<sub>6</sub> and its molecular weight is 418.3 g/mol. The structural formula is:



**Zinc Sulphate Monohydrate:**

Zinc Sulphate Monohydrate empirical formula is ZnSO<sub>4</sub>·H<sub>2</sub>O and its molecular weight is 179.5g/mol. The structural formula is:



**CANTHEX CAPSULES:**

Alpha Lipoic Acid, Biotin, Chromium polynicotinate and Zinc Capsules are Orange/White coloured '0' Size hard gelatin capsule filled with yellow colour granular powder. The Excipient

used are Microcrystalline Cellulose Powder, Croscarmellose Sodium, Colloidal Silicon Dioxide, Polyplasdone, Sodium Lauryl Sulphate and Orange /White colour.

## **8 Pharmaceutical particulars**

### **8.1 Incompatibilities**

Not applicable

### **8.2 Shelf-life**

Do not use later than date of expiry.

### **8.3 Packaging information**

**CANTHEX CAPSULES** is available in pack of 30 & 60 Capsules

### **8.4 Storage and handing instructions**

Do not store above 30°C. Store protected from light and moisture.

Keep out of reach of children.

Appropriate overage are added to compensate the loss on storage.

## **9. Patient Counselling Information**

Ask the patients to inform the treating physicians in case of any of the below:

- Have any allergies
- Are pregnant or plan to become pregnant
- Are breastfeeding or plan to breastfeed
- Have any serious illness
- Are taking any medicines (prescription, over-the-counter, vitamins, or herbal products)

## **10 Details of manufacturer**

Safetab Life Science,

Plot No.: A-67 to 72,

PIPDIC Electronic Park,

Thirubuvanai, Puducherry – 605 107.

## **11 Details of permission or licence number with date**

Mfg. Licence. No.:07 22 1907 Issued on: 11.01.2023

## **12. Date of revision**

NA

### **MARKETED BY**



**TORRENT PHARMACEUTICALS LTD.**

Torrent House, Off Ashram Road,

Ahmedabad-380 009, INDIA

**IN/ CANTHEX CAPSULES/ Feb-2024/01/PI**