

For the use of a Registered Medical Practitioner or a Hospital or a Laboratory only

METOCARD AMT 50

Warning: Fetal Toxicity

When pregnancy is detected discontinue the product as soon as possible, Drug that act directly on the renin – angiotensin system can cause injury and death to developing fetus.

1. Generic Name

Metoprolol (ER), Amlodipine & Telmisartan Tablets (50 mg + 5 mg + 40 mg)

2. Qualitative and quantitative composition

METOCARD AMT 50

Each Film Coated Bilayered Tablet Contains:

Metoprolol Succinate I.P.....47.5 mg

Eq. to Metoprolol Tartrate.....50 mg

(As Extended Release form)

Amlodipine Besilate I.P.

Eq. to Amlodipine.....5 mg

Telmisartan I.P.....40 mg

Colours: Ferric Oxide USPNF Red, Ferric Oxide USPNF Yellow & Titanium Dioxide I.P.

The excipients used are Microcrystalline Cellulose, Iron Oxide Yellow, Iron Oxide Red, Dibasic Calcium Phosphate, Sodium Starch Glycolate, Polyvinyl Pyrrolidone, Collodial Silicon Dioxide, Magnesium Stearate, Metoprolol Succinate, Xanthan Gum, Methocel K 100 M, Hydroxy Propyl Cellulose, Isopropyl Alcohol, Sodium Stearyl Fumarate, Akoat 512.

3. Dosage form and strength

Dosage form: Film Coated Bilayered Tablet

Strength: Metoprolol (ER) 50 mg, Amlodipine 5 mg and Telmisartan 40 mg

4. Clinical particulars

4.1 Therapeutic indication

It is indicated for the treatment of uncontrolled essential hypertension with stable coronary artery disease.

4.2 Posology and method of administration

Posology

Once daily, with or without food.

Method of administration

Tablet for oral administration.

4.3 Contraindications

Metoprolol

- Hypersensitivity to the active substance or to any of the excipients or other betablockers, in patients with severe asthma or history of severe bronchospasm, in patients with atrioventricular block of second or third degree, in patients with cardiogenic shock, uncontrolled heart failure, sick sinus syndrome (unless a pacemaker is in situ), hypotension, untreated phaeochromocytoma, severe peripheral circulatory disturbances, clinically relevant sinus bradycardia (<45-50 bpm), after prolonged fasting, and in metabolic acidosis (e.g. in some diabetics).
- Metoprolol is also contraindicated when myocardial infarction is complicated by significant bradycardia, first degree heart block, systolic hypotension (less than 100 mmHg) and/or severe heart failure.

Amlodipine

- Hypersensitivity to dihydropyridine derivatives, amlodipine or to any of the excipients.
- Severe hypotension.
- Shock (including cardiogenic shock).
- Obstruction of the outflow tract of the left ventricle (e.g., high grade aortic stenosis).
- Haemodynamically unstable heart failure after acute myocardial infarction.

Telmisartan

- Hypersensitivity to the active substance or other excipients.
- Second and third trimesters of pregnancy
- Biliary obstructive disorders
- Severe hepatic impairment
- The concomitant use of Telmisartan with aliskiren-containing products is contraindicated in patients with diabetes mellitus or renal impairment (GFR < 60 ml/min/1.73 m²)

4.4 Special warnings and precautions for use

Fetal Toxicity

When pregnancy is detected discontinue the product as soon as possible, Drug that act directly on the renin – angiotensin system can cause injury and death to developing fetus.

Metoprolol

Abrupt cessation of therapy with a beta-blocker should be avoided especially in patients with ischaemic heart disease. When possible, metoprolol should be withdrawn gradually over a period of 10 days. If necessary, at the same time, initiating replacement therapy, to prevent exacerbation of angina pectoris. In addition, hypertension and arrhythmias may develop. When it has been decided to interrupt a beta-blockade in preparation for surgery, therapy should be discontinued for at least 24 hours. Continuation of beta-blockade reduces the risk

of arrhythmias during induction and intubation, however the risk of hypertension may be increased as well. If treatment is continued, caution should be observed with the use of certain anaesthetic drugs. The patient may be protected against vagal reactions by intravenous administration of atropine. During its withdrawal the patient should be kept under close surveillance.

Although cardio selective beta blockers may have less effect on lung function than non-selective beta blockers these should be avoided in patients with reversible obstructive airways disease unless there are compelling clinical reasons for their use. Although metoprolol has proved safe in a large number of asthmatic patients, it is advisable to exercise care in the treatment of patients with chronic obstructive pulmonary disease. Therapy with a beta₂-stimulant may become necessary or current therapy require adjustment. Therefore, non-selective beta blockers should not be used for these patients, and beta₁-selective blockers only with the utmost care.

Discontinuation of the drug should be considered if any such reaction is not otherwise explicable. Cessation of therapy with a beta blocker should be gradual.

Metoprolol may not be administered to patients with untreated congestive heart failure. The congestive heart failure needs to be brought under control first of all. If concomitant digoxin treatment is taking place, it must be borne in mind that both medicinal products slow AV conduction and that there is therefore a risk of AV dissociation. In addition, mild cardiovascular complications may occur, manifesting as dizziness, bradycardia, and a tendency to collapse.

When a beta blocker is being taken, a serious, sometimes even life-threatening deterioration in cardiac function can occur, in particular in patients in whom the action of the heart is dependent on the presence of sympathetic system support. This is due less to an excessive beta-blocking effect and more to the fact that patients with marginal heart function tolerate poorly a reduction in sympathetic nervous system activity, even where this reduction is slight. This causes contractility to become weaker and the heart rate to reduce and slows down AV conduction. The consequence of this can be pulmonary oedema, AV block, and shock. Occasionally, an amlodipine g AV conduction disturbance can deteriorate, which can lead to AV block. In patients with a phaeochromocytoma, an alpha blocker should be given concomitantly.

Before a patient undergoes an operation, the anaesthetist must be informed that metoprolol is being taken. Acute initiation of high-dose metoprolol to patients undergoing non-cardiac surgery should be avoided, since it has been associated with bradycardia, hypotension and stroke including fatal outcome in patients with cardiovascular risk factors.

Beta-blockers mask some of the clinical signs of thyrotoxicosis. Therefore, Metoprolol should be administered with caution to patients having, or suspected of developing, thyrotoxicosis, and both thyroid and cardiac function should be monitored closely. Simultaneous administration of adrenaline (epinephrine), noradrenaline (norepinephrine) and β blockers may lead to increase in blood pressure and bradycardia.

Metoprolol may induce or aggravate bradycardia, symptoms of peripheral arterial circulatory disorders and anaphylactic shock. If the pulse rate decreases to less than 50-55 beats per minute at rest and the patient experiences symptoms related to the bradycardia, the dosage should be reduced.

Metoprolol may be administered when heart failure has been controlled. Digitalisation and/or diuretic therapy should also be considered for patients with a history of heart failure or patients known to have a poor cardiac reserve.

Metoprolol may reduce the effect of diabetes treatment and mask the symptoms of hypoglycaemia. The risk of a carbohydrate metabolism disorder or masking of the symptoms of hypoglycaemia is lower when using metoprolol prolonged release tablets than when using regular tablet forms for beta₁ selective beta blockers and significantly lower than when using nonselective beta blockers. In labile and insulin-dependent diabetes, it may be necessary to adjust the hypoglycaemic therapy.

In case of unstable or insulin dependent diabetes mellitus, it may be necessary to adjust the hypoglycaemic treatment (because of the likelihood of severe hypoglycaemic conditions).

In patients with significant hepatic dysfunction it may be necessary to adjust the dosage because metoprolol undergoes biotransformation in the liver. Patients with hepatic or renal insufficiency may need a lower dosage, and metoprolol is contraindicated in patients with hepatic or renal disease/failure. The elderly should be treated with caution, starting with a lower dosage but tolerance is usually good in the elderly. It may be necessary to use a lower strength formulation in elderly patients and patients with hepatic or renal impairment and an alternative product should be prescribed.

Patients with anamnesticly known psoriasis should take beta-blockers only after careful consideration as the medicine may cause aggravation of psoriasis.

Beta blockers may increase both the sensitivity towards allergens and the seriousness of anaphylactic reactions. Adrenaline (epinephrine) treatment does not always give the desired therapeutic effect in individuals receiving beta blockers.

Beta blockers may unmask myasthenia gravis.

In the presence of liver cirrhosis, the bioavailability of metoprolol may be increased, and dosage should be adjusted accordingly.

Patients with rare hereditary problems of galactose intolerance, the Lapp lactase deficiency or glucose galactose mal-absorption should not take this medicine.

Dry eyes either alone or, occasionally, with skin rashes has occurred. In most cases the symptoms cleared when metoprolol treatment was withdrawn. Patients should be observed carefully for potential ocular effects. If such effects occur, discontinuation of metoprolol should be considered.

Amlodipine

The safety and efficacy of amlodipine in hypertensive crisis has not been established.

Patients with cardiac failure

Patients with heart failure should be treated with caution. In a long-term, placebo controlled study in patients with severe heart failure (NYHA class III and IV) the reported incidence of pulmonary oedema was higher in the amlodipine treated group than in the placebo group. Calcium channel blockers, including amlodipine, should be used with caution in patients with congestive heart failure, as they may increase the risk of future cardiovascular events and mortality.

Patients with hepatic impairment

The half-life of amlodipine is prolonged and AUC values are higher in patients with impaired liver function; dosage recommendations have not been established. Amlodipine should therefore be initiated at the lower end of the dosing range and caution should be used, both on initial treatment and when increasing the dose. Slow dose titration and careful monitoring may be required in patients with severe hepatic impairment.

Elderly patients

In the elderly increase of the dosage should take place with care.

Patients with renal impairment

Amlodipine may be used in such patients at normal doses. Changes in amlodipine plasma concentrations are not correlated with degree of renal impairment. Amlodipine is not dialysable.

Telmisartan

Pregnancy

Angiotensin II receptor antagonists should not be initiated during pregnancy. Unless continued angiotensin II receptor antagonist therapy is considered essential, patients planning pregnancy should be changed to alternative antihypertensive treatments which have an established safety profile for use in pregnancy. When pregnancy is diagnosed, treatment with angiotensin II receptor antagonists should be stopped immediately, and, if appropriate, alternative therapy should be started.

Hepatic impairment

Telmisartan is not to be given to patients with cholestasis, biliary obstructive disorders or severe hepatic impairment since telmisartan is mostly eliminated with the bile. These patients can be expected to have reduced hepatic clearance for telmisartan. Telmisartan should be used only with caution in patients with mild to moderate hepatic impairment.

Renovascular hypertension

There is an increased risk of severe hypotension and renal insufficiency when patients with bilateral renal artery stenosis or stenosis of the artery to a single functioning kidney are treated with medicinal products that affect the renin-angiotensin aldosterone system.

Renal impairment and kidney transplantation

When Telmisartan is used in patients with impaired renal function, periodic monitoring of potassium and creatinine serum levels is recommended. There is no experience regarding the administration of Telmisartan in patients with recent kidney transplantation.

Intravascular hypovolaemia

Symptomatic hypotension, especially after the first dose of Telmisartan, may occur in patients who are volume and/or sodium depleted by vigorous diuretic therapy, dietary salt restriction, diarrhoea, or vomiting. Such conditions should be corrected before the administration of Telmisartan. Volume and/or sodium depletion should be corrected prior to administration of Telmisartan.

Dual blockade of the renin-angiotensin-aldosterone system (RAAS)

There is evidence that the concomitant use of ACE-inhibitors, angiotensin II receptor blockers or aliskiren increases the risk of hypotension, hyperkalaemia and decreased renal function (including acute renal failure). Dual blockade of RAAS through the combined use of ACE-inhibitors, angiotensin II receptor blockers or aliskiren is therefore not recommended. If dual blockade therapy is considered absolutely necessary, this should only occur under specialist supervision and subject to frequent close monitoring of renal function, electrolytes and blood pressure.

ACE-inhibitors and angiotensin II receptor blockers should not be used concomitantly in patients with diabetic nephropathy.

Other conditions with stimulation of the renin-angiotensin-aldosterone system

In patients whose vascular tone and renal function depend predominantly on the activity of the renin-angiotensin aldosterone system (e.g. patients with severe congestive heart failure or underlying renal disease, including renal artery stenosis), treatment with medicinal products that affect this system such as telmisartan has been associated with acute hypotension, hyperazotaemia, oliguria, or rarely acute renal failure.

Primary aldosteronism

Patients with primary aldosteronism generally will not respond to antihypertensive medicinal products acting through inhibition of the renin-angiotensin system. Therefore, the use of telmisartan is not recommended.

Aortic and mitral valve stenosis, obstructive hypertrophic cardiomyopathy

As with other vasodilators, special caution is indicated in patients suffering from aortic or mitral stenosis, or obstructive hypertrophic cardiomyopathy.

Diabetic patients treated with insulin or antidiabetics

In these patients hypoglycaemia may occur under telmisartan treatment. Therefore, in these patients an appropriate blood glucose monitoring should be considered; a dose adjustment of insulin or antidiabetics may be required, when indicated.

Hyperkalaemia

The use of medicinal products that affect the renin-angiotensin-aldosterone system may cause hyperkalaemia.

In the elderly, in patients with renal insufficiency, in diabetic patients, in patients concomitantly treated with other medicinal products that may increase potassium levels, and/or in patients with intercurrent events, hyperkalaemia may be fatal.

Before considering the concomitant use of medicinal products that affect the renin-angiotensin-aldosterone system, the benefit risk ratio should be evaluated.

The main risk factors for hyperkalaemia to be considered are:

- Diabetes mellitus, renal impairment, age (>70 years)
- Combination with one or more other medicinal products that affect the renin-angiotensin-aldosterone system and/or potassium supplements. Medicinal products or therapeutic classes of medicinal products that may provoke hyperkalaemia are salt substitutes containing potassium, potassium-sparing diuretics, ACE inhibitors, angiotensin II receptor antagonists, non-steroidal anti-inflammatory medicinal products (NSAIDs, including selective COX-2 inhibitors), heparin, immunosuppressives (cyclosporin or tacrolimus), and trimethoprim.
- Intercurrent events, in particular dehydration, acute cardiac decompensation, metabolic acidosis, worsening of renal function, sudden worsening of the renal condition (e.g. infectious diseases), cellular lysis (e.g. acute limb ischemia, rhabdomyolysis, extend trauma).

Close monitoring of serum potassium in at risk patients is recommended.

Sodium

This medicine contains less than 1 Mmol sodium (23 mg) per tablet, that is to say essentially 'sodium-free'.

Ethnic differences

As observed for angiotensin converting enzyme inhibitors, telmisartan and the other angiotensin II receptor antagonists are apparently less effective in lowering blood pressure in black people than in non-blacks, possibly because of higher prevalence of low-renin states in the black hypertensive population.

Other

As with any antihypertensive agent, excessive reduction of blood pressure in patients with ischaemic cardiopathy or ischaemic cardiovascular disease could result in a myocardial infarction or stroke.

4.5 Drugs interactions

Metoprolol

Anaesthetic drugs may attenuate reflex tachycardia and increase the risk of hypotension. Metoprolol therapy should be reported to the anaesthetist before the administration of a

general anaesthetic. If possible, withdrawal of metoprolol should be completed at least 48 hours before anaesthesia. However, for some patients undergoing elective surgery, it may be desirable to employ a beta-blocker as premedication. By shielding the heart against the effect of stress, metoprolol may prevent excessive sympathetic stimulation which is liable to provoke such cardiac disturbance as arrhythmias or acute coronary insufficiency during induction and intubation. Anaesthetic agents causing myocardial depression, such as cyclopropane and trichloroethylene, are best avoided. In a patient under beta-blockade an anaesthetic with as little negative inotropic activity as possible (halothane/nitrous oxide) should be selected.

-It may be necessary to adjust the dose of the hypoglycaemic agent in labile or insulin-dependent diabetes. Beta-adrenergic blockade may prevent the appearance of signs of hypoglycaemia (tachycardia).

-Like all beta-blockers, metoprolol should not be given in combination with calcium channel blockers i.e. verapamil and to a lesser extent diltiazem since this may cause bradycardia, hypotension, heart failure and asystole and may increase auriculoventricular conduction time. However, combinations of antihypertensive drugs may often be used with benefit to improve control of hypertension. Calcium blockers of the verapamil type should not be administered intravenously to patients receiving beta blockers.

-Care should also be taken when beta-blockers are given in combination with sympathetic ganglion blocking agents, other beta blockers or MAO inhibitors. Concomitant administration of tricyclic antidepressants, barbiturates and phenothiazines as well as other antihypertensive agents may increase the blood pressure lowering effect.

Calcium channel blockers (such as dihydropyridine derivatives e.g. nifedipine) should not be given in combination with metoprolol because of the increased risk of hypotension and heart failure. In patients with latent cardiac insufficiency, treatment with beta-blocking agents may lead to cardiac failure. Beta-blockers used in conjunction with clonidine increase the risk of "rebound hypertension". If combination treatment with clonidine is to be discontinued, metoprolol should be withdrawn several days before clonidine.

The effects of metoprolol and other antihypertensive drugs on blood pressure are usually additive, and care should be taken to avoid hypotension.

NSAIDs (especially indomethacin) may reduce the antihypertensive effects of beta-blockers possibly by inhibiting renal prostaglandin synthesis and/or causing sodium and fluid retention.

Digitalis Glycosides and/or diuretics should be considered for patients with a previous history of heart failure or in patients known to have a poor cardiac reserve. Digitalis glycosides in association with beta-blockers may increase in auriculo-ventricular conduction time.

The administration of adrenaline (epinephrine) or noradrenaline (norepinephrine) to patients undergoing beta-blockade can result in an increase in blood pressure and bradycardia, although this is less likely to occur with beta1-selective drugs. As beta-blockers may affect the peripheral circulation, care should be exercised when drugs with similar activity e.g.

ergotamine are given concurrently. Concurrent use of moxislyte may result in possible severe postural hypotension.

The effect of adrenaline (epinephrine) in the treatment of anaphylactic reactions may be weakened in patients receiving beta blockers.

Metoprolol will antagonise the beta₁-effects of sympathomimetic agents but should have little influence on the bronchodilator effects of beta₂-agonists at normal therapeutic doses.

Enzyme inducing agents (e.g. rifampicin) may reduce plasma concentrations of metoprolol, whereas enzyme inhibitors (e.g. cimetidine, hydralazine and alcohol), selective serotonin reuptake inhibitors (SSRIs) as paroxetine, fluoxetine and sertraline, diphenhydramine, hydroxychloroquine, celecoxib, terbinafine may increase plasma concentrations of hepatically metabolized beta blockers.

As with all beta-blockers particular caution is called for when metoprolol is administered together with prazosin for the first time as the co-administration of metoprolol and prazosin may produce a first dose hypotensive effect.

Class 1 antiarrhythmic drugs, e.g. disopyramide, quinidine and amiodarone may have potentiating effects on atrial conduction time and induce negative inotropic effect. Concurrent use of propafenone may result in significant increases in plasma concentrations and half-life of metoprolol. Plasma propafenone concentrations are unaffected. Dosage reduction of metoprolol may be necessary.

During concomitant ingestion of alcohol and metoprolol the concentration of blood alcohol may reach higher levels and may decrease more slowly. The concomitant ingestion of alcohol may enhance hypotensive effects.

Metoprolol may impair the elimination of lidocaine.

Prostaglandin synthetase inhibiting drugs may decrease the hypotensive effects of beta-blockers.

Concurrent use of oestrogens may decrease the antihypertensive effect of beta-blockers because oestrogen induced fluid retention may lead to increased blood pressure.

Concurrent use of xanthines, especially aminophylline or theophylline, may result in mutual inhibition of therapeutic effects.

Xanthine clearance may also be decreased especially in patients with increased theophylline clearance induced by smoking.

Concurrent use requires careful monitoring.

Concurrent use of aldesleukin may result in an enhanced hypotensive effect.

Concurrent use of alprostadil may result in an enhanced hypotensive effect.

There is an increased risk of bradycardia following concomitant use of mefloquine with metoprolol.

Concomitant use with anxiolytics and hypnotics may result in an enhanced hypotensive effect.

Concomitant use with corticosteroids may result in antagonism of the hypotensive effect.

The manufacturer of tropisetron advises caution in concomitant administration due to the risk of ventricular arrhythmias.

Amlodipine

CYP3A4 inhibitors

Concomitant use of amlodipine with strong or moderate CYP3A4 inhibitors (protease inhibitors, azole antifungals, macrolides like erythromycin or clarithromycin, verapamil or diltiazem) may give rise to significant increase in amlodipine exposure resulting in an increased risk of hypotension. The clinical translation of these PK variations may be more pronounced in the elderly. Clinical monitoring and dose adjustment may thus be required.

CYP3A4 inducers

Upon co-administration of known inducers of the CYP3A4, the plasma concentration of amlodipine may vary. Therefore, blood pressure should be monitored and dose regulation considered both during and after concomitant medication particularly with strong CYP3A4 inducers (e.g. rifampicin, hypericum perforatum).

Administration of amlodipine with grapefruit or grapefruit juice is not recommended as bioavailability may be increased in some patients resulting in increased blood pressure lowering effects.

Dantrolene (infusion)

In animals, lethal ventricular fibrillation and cardiovascular collapse are observed in association with hyperkalemia after administration of verapamil and intravenous dantrolene. Due to risk of hyperkalemia, it is recommended that the co-administration of calcium channel blockers such as amlodipine be avoided in patients susceptible to malignant hyperthermia and in the management of malignant hyperthermia.

Effects of amlodipine on other medicinal products

The blood pressure lowering effects of amlodipine adds to the blood pressure-lowering effects of other medicinal products with antihypertensive properties.

Tacrolimus

There is a risk of increased tacrolimus blood levels when co-administered with amlodipine but the pharmacokinetic mechanism of this interaction is not fully understood. In order to avoid toxicity of tacrolimus, administration of amlodipine in a patient treated with tacrolimus requires monitoring of tacrolimus blood levels and dose adjustment of tacrolimus when appropriate.

Mechanistic Target of Rapamycin (mTOR) Inhibitors

mTOR inhibitors such as sirolimus, temsirolimus, and everolimus are CYP3A substrates. Amlodipine is a weak CYP3A inhibitor. With concomitant use of mTOR inhibitors, amlodipine may increase exposure of mTOR inhibitors.

Cyclosporine

No drug interaction studies have been conducted with cyclosporine and amlodipine in healthy volunteers or other populations with the exception of renal transplant patients, where variable trough concentration increases (average 0% - 40%) of cyclosporine were observed. Consideration should be given for monitoring cyclosporine levels in renal transplant patients on amlodipine, and cyclosporine dose reductions should be made as necessary.

Simvastatin

Co-administration of multiple doses of 10 mg of amlodipine with 80 mg simvastatin resulted in a 77% increase in exposure to simvastatin compared to simvastatin alone. Limit the dose of simvastatin in patients on amlodipine to 20 mg daily.

In clinical interaction studies, amlodipine did not affect the pharmacokinetics of atorvastatin, digoxin or warfarin.

Telmisartan

Digoxin

When telmisartan was co-administered with digoxin, median increases in digoxin peak plasma concentration (49%) and in trough concentration (20%) were observed. When initiating, adjusting, and discontinuing telmisartan, monitor digoxin levels in order to maintain levels within the therapeutic range.

As with other medicinal products acting on the renin-angiotensin-aldosterone system, telmisartan may provoke hyperkalaemia (see section 4.4). The risk may increase in case of treatment combination with other medicinal products that may also provoke hyperkalaemia (salt substitutes containing potassium, potassium-sparing diuretics, ACE inhibitors, angiotensin II receptor antagonists, non-steroidal anti-inflammatory medicinal products (NSAIDs, including selective COX-2 inhibitors), heparin, immune suppressives (cyclosporin or tacrolimus), and trimethoprim).

The occurrence of hyperkalaemia depends on associated risk factors. The risk is increased in case of the abovementioned treatment combinations. The risk is particularly high in combination with potassium sparing-diuretics, and when combined with salt substitutes containing potassium. A combination with ACE inhibitors or NSAIDs, for example, presents a lesser risk provided that precautions for use are strictly followed.

Concomitant use not recommended.

Potassium sparing diuretics or potassium supplements

Angiotensin II receptor antagonists such as telmisartan, attenuate diuretic induced potassium loss. Potassium sparing diuretics e.g. spirinolactone, eplerenone, triamterene, or amiloride,

potassium supplements, or potassium-containing salt substitutes may lead to a significant increase in serum potassium. If concomitant use is indicated because of documented hypokalaemia, they should be used with caution and with frequent monitoring of serum potassium.

Lithium

Reversible increases in serum lithium concentrations and toxicity have been reported during concomitant administration of lithium with angiotensin converting enzyme inhibitors, and with angiotensin II receptor antagonists, including telmisartan. If use of the combination proves necessary, careful monitoring of serum lithium levels is recommended.

Concomitant use requiring caution.

Non-steroidal anti-inflammatory medicinal products

NSAIDs (i.e. acetylsalicylic acid at anti-inflammatory dosage regimens, COX-2 inhibitors and non-selective NSAIDs) may reduce the antihypertensive effect of angiotensin II receptor antagonists.

In some patients with compromised renal function (e.g. dehydrated patients or elderly patients with compromised renal function), the co-administration of angiotensin II receptor antagonists and agents that inhibit cyclo-oxygenase may result in further deterioration of renal function, including possible acute renal failure, which is usually reversible. Therefore, the combination should be administered with caution, especially in the elderly. Patients should be adequately hydrated and consideration should be given to monitoring of renal function after initiation of concomitant therapy and periodically thereafter.

In one study the co-administration of telmisartan and ramipril led to an increase of up to 2.5 fold in the AUC_{0-24} and C_{max} of ramipril and ramiprilat. The clinical relevance of this observation is not known.

Diuretics (thiazide or loop diuretics)

Prior treatment with high dose diuretics such as furosemide (loop diuretic) and hydrochlorothiazide (thiazide diuretic) may result in volume depletion, and in a risk of hypotension when initiating therapy with telmisartan.

To be taken into account with concomitant use.

Other antihypertensive agents

The blood pressure lowering effect of telmisartan can be increased by concomitant use of other antihypertensive medicinal products.

Clinical trial data has shown that dual blockade of the renin-angiotensin-aldosterone system (RAAS) through the combined use of ACE-inhibitors, angiotensin II receptor blockers or aliskiren is associated with a higher frequency of adverse events such as hypotension, hyperkalaemia and decreased renal function (including acute renal failure) compared to the use of a single RAAS-acting agent.

Based on their pharmacological properties it can be expected that the following medicinal products may potentiate the hypotensive effects of all antihypertensives including telmisartan: Baclofen, amifostine. Furthermore, orthostatic hypotension may be aggravated by alcohol, barbiturates, narcotics, or antidepressants.

Corticosteroids (systemic route)

Reduction of the antihypertensive effect.

4.6 Use in special populations (such as pregnant women, lactating women, paediatric patients, Fertility etc.)

Metoprolol

Pregnancy

It is recommended that metoprolol should not be administered during pregnancy or lactation unless it is considered that the benefit outweighs the possible risk to the foetus/infant. Should therapy with metoprolol be employed, special attention should be paid to the foetus, neonate and breast fed infant for any undesirable effects such as slowing of the heart rate.

Metoprolol has, however, been used in pregnancy associated hypertension under close supervision after 20 weeks' gestation. Although the drug crosses the placental barrier and is present in cord blood no evidence of foetal abnormalities has been reported. However, there is an increased risk of cardiac and pulmonary complications in the neonate in the postnatal period.

Beta blockers reduce placental perfusion and may cause foetal death and premature birth. Intrauterine growth retardation has been observed after long time treatment of pregnant women with mild to moderate hypertension. Beta blockers have been reported to cause bradycardia in the foetus and the newborn child, there are also reports of hypoglycaemia and hypotension in newborn children.

Animal experiments have shown neither teratogenic potential nor other adverse events on the embryo and/or foetus relevant to the safety assessment of the product. Treatment with metoprolol should be discontinued 48-72 hours before the calculated birth date. If this is not possible, the newborn child should be monitored for 24-48 hours' post-partum for signs and symptoms of beta blockade (e.g. cardiac and pulmonary complications).

Lactation

The concentration of metoprolol in breast milk is approximately three times higher than the one in the mother's plasma. The risk of adverse effects in the breastfeeding baby would appear to be low after administration of therapeutic doses of the medicinal product (except in individuals with poor metabolic capacity). Cases of neonatal hypoglycaemia and bradycardia have been described with beta-blockers with low plasma protein binding. Metoprolol is excreted in human milk. Even though the metoprolol concentration in milk is very low, breastfeeding should be discontinued during treatment with metoprolol. In case of treatment during breast feeding, infants should be monitored carefully for symptoms of beta blockade.

Amlodipine

Pregnancy

The safety of amlodipine in human pregnancy has not been established. In animal studies, reproductive toxicity was observed at high doses. Use in pregnancy is only recommended when there is no safer alternative and when the disease itself carries greater risk for the mother and foetus.

Lactation

Amlodipine is excreted in human milk. The proportion of the maternal dose received by the infant has been estimated with an interquartile range of 3-7%, with a maximum of 15%. The effect of amlodipine on infants is unknown. A decision on whether to continue/discontinue breast-feeding or to continue/discontinue therapy with amlodipine should be made taking into account the benefit of breast-feeding to the child and the benefit of amlodipine therapy to the mother.

Fertility

Reversible biochemical changes in the head of spermatozoa have been reported in some patients treated by calcium channel blockers. Clinical data are insufficient regarding the potential effect of amlodipine on fertility. In one rat study, adverse effects were found on male fertility

Telmisartan

Pregnancy

The use of angiotensin II receptor antagonists is not recommended during the first trimester of pregnancy (see section 4.4). The use of angiotensin II receptor antagonists is contraindicated during the second and third trimesters of pregnancy

There are no adequate data from the use of Telmisartan in pregnant women. Studies in animals have shown reproductive toxicity.

Epidemiological evidence regarding the risk of teratogenicity following exposure to ACE inhibitors during the first trimester of pregnancy has not been conclusive; however a small increase in risk cannot be excluded. Whilst there is no controlled epidemiological data on the risk with angiotensin II receptor antagonists, similar risks may exist for this class of drugs. Unless continued angiotensin II receptor antagonist therapy is considered essential, patients planning pregnancy should be changed to alternative antihypertensive treatments which have an established safety profile for use in pregnancy. When pregnancy is diagnosed, treatment with angiotensin II receptor antagonists should be stopped immediately, and, if appropriate, alternative therapy should be started.

Exposure to angiotensin II receptor antagonist therapy during the second and third trimesters is known to induce human fetotoxicity (decreased renal function, oligohydramnios, skull ossification retardation) and neonatal toxicity (renal failure, hypotension, and hyperkalaemia).

Should exposure to angiotensin II receptor antagonists have occurred from the second trimester of pregnancy, ultrasound check of renal function and skull is recommended.

Infants whose mothers have taken angiotensin II receptor antagonists should be closely observed for hypotension.

Breast-feeding

Because no information is available regarding the use of Telmisartan during breastfeeding, Telmisartan is not recommended and alternative treatments with better established safety profiles during breast-feeding are preferable, especially while nursing a newborn or preterm infant.

Fertility

In preclinical studies, no effects of telmisartan on male and female fertility were observed.

4.7 Effects on ability to drive and use machines

Metoprolol

As with all beta-blockers, metoprolol can affect patient's ability to drive and operate machinery. It should be taken into account that occasionally dizziness and fatigue may occur. Patient should be warned accordingly. If affected, patients should not drive or operate machinery.

Amlodipine

Amlodipine can have minor or moderate influence on the ability to drive and use machines. If patients taking amlodipine suffer from dizziness, headache, fatigue or nausea the ability to react may be impaired. Caution is recommended especially at the start of treatment.

Telmisartan

When driving vehicles or operating machinery it should be taken into account that dizziness or drowsiness may occasionally occur when taking antihypertensive therapy such as Telmisartan.

4.8 Undesirable effects

Metoprolol, Amlodipine & Telmisartan

Tabulated list of adverse reactions

The following adverse reactions have been observed and reported during treatment with Metoprolol, amlodipine and telmisartan with the following frequencies: Very common ($\geq 1/10$); common ($\geq 1/100$ to $< 1/10$); uncommon ($\geq 1/1,000$ to $< 1/100$); rare ($\geq 1/10,000$ to $< 1/1,000$); very rare ($< 1/10,000$); not known (cannot be estimated from the available data).

Within each frequency grouping, adverse reactions are presented in order of decreasing seriousness.

System Organ Class	Very common (≥1/10)	Common (≥1/100 to <1/10)	Uncommon (≥1/1,000 to <1/100)	Rare (≥1/10,000 to <1/1,000)	Very rare (<1/10,000)	Not known (cannot be estimated from the available data)
Infections and infestations			Urinary tract infection including cystitis, upper respiratory tract infection including pharyngitis and sinusitis	Sepsis including fatal outcome ¹		
Blood and lymphatic system disorders			Anaemia	Eosinophilia , thrombocytopenia	Thrombocytopenia, leukocytopenia, agranulocytosis.	
Immune system disorders				Anaphylactic reaction, hypersensitivity	Allergic reactions	
Metabolism and nutrition disorders			Hyperkalaemia	Hypoglycaemia (in diabetic patients)	Hyperglycaemia	
Psychiatric disorders			Insomnia, mood changes (including anxiety), depression	Nightmares, Nervousness, anxiety, impotence, confusion	Hallucinations, personality disorder, Amnesia/ memory impairment	

Nervous system disorders		Somnolence, dizziness, headache (especially at the beginning of the treatment)	Tremor, dysgeusia, syncope, hypoesthesia, paraesthesia	Alertness decrease, insomnia, paraesthesia.	Hypertonia, peripheral neuropathy	Extrapyramidal disorder
Eye disorders		Visual disturbance (including diplopia)			Visual disturbances (e.g. blurred vision), dry eye and/ or eye irritation	
Ear and labyrinth disorders			Vertigo, Tinnitus		Tinnitus, and in doses exceeding those recommended "hearing disorders (e.g. hypoacusis or deafness)	
Cardiac disorders		Bradycardia, palpitations	Arrhythmia (including bradycardia, ventricular tachycardia and atrial fibrillation)	Heart failure, cardiac arrhythmia, palpitations, tachycardia	Cardiac conduction disorder, precordial pain, myocardial infarction.	Increase in existing intermittent claudication

Vascular disorders		Orthostatic hypotension, occasionally with syncope, flushing	Hypotension ² , orthostatic hypotension.	Oedema, Raynaud's syndrome.	Gangrene in patients with pre-existing severe peripheral circulatory disorders, vasculitis	
Respiratory, thoracic and mediastinal disorders		Exertional dyspnoea.	Cough, rhinitis	Bronchospasms (which may occur in patients without a history of obstructive lung disease)	Rhinitis, interstitial lung disease ⁴ .	
Gastrointestinal disorders		Abdominal pain, nausea and vomiting, dyspepsia, altered bowel habits (including diarrhoea and constipation).	Dry mouth	Diarrhoea or constipation	Pancreatitis, gastritis, gingival hyperplasia	Retroperitoneal fibrosis *
Hepatobiliary disorders				Hepatic function abnormal/liver disorder ³	Hepatitis, jaundice, hepatic enzymes increased*	

Skin and subcutaneous tissue disorders			Alopecia, purpura, skin discoloration, hyperhidrosis, pruritus, Skin rash (in the form of urticaria, psoriasiform and dystrophic skin lesions), exanthema, urticaria	Angioedema (also with fatal outcome), eczema, erythema, urticaria, drug eruption, toxic skin eruption	Photosensitivity, worsening of psoriasis, angioedema, erythema, multiforme, exfoliative dermatitis, Stevens-Johnson syndrome, Quincke's oedema	Occurrence of antinuclear antibodies (not associated with SLE), Toxic Epidermal Necrolysis.
Musculoskeletal and connective tissue disorders		Ankle swelling, muscle cramps	Arthralgia, myalgia, back pain (e.g. sciatica),	Pain in extremity, tendon pain (tendinitis like symptoms)	Arthritis	
Reproductive system and breast disorders			Impotence, gynaecomastia		Disturbances of libido and potency	Peyronie's disease *
Renal and urinary disorders			Renal impairment including acute renal failure, Micturition disorder, nocturia, increased urinary frequency			

General disorders and administration site conditions	Oedema	Fatigue, asthenia	Chest pain, pain, malaise, asthenia (weakness)	Influenza-like illness	Dysgeusia (Taste disturbances)	
Investigations			Blood creatinine increased, weight increase, weight decrease	Haemoglobin decreased, blood uric acid increased, hepatic enzyme increased, blood creatine phosphokinase increased	Liver function test abnormal	

* (relationship to Metoprolol has not been definitely established).

Beta-blockers may mask the symptoms of thyrotoxicosis or hypoglycaemia.

*mostly consistent with cholestasis

^{1,2,3,4}:for further descriptions, please see sub-section “*Description of selected adverse reactions*”

Description of selected adverse reactions

Sepsis

In the PROfESS trial, an increased incidence of sepsis was observed with telmisartan compared with placebo. The event may be a chance finding or related to a mechanism currently not known.

Hypotension

This adverse reaction was reported as common in patients with controlled blood pressure who were treated with telmisartan for the reduction of cardiovascular morbidity on top of standard care.

Hepatic function abnormal / liver disorder

Most cases of hepatic function abnormal / liver disorder from post-marketing experience occurred in Japanese patients. Japanese patients are more likely to experience these adverse reactions.

Interstitial lung disease

Cases of interstitial lung disease have been reported from post-marketing experience in temporal association with the intake of telmisartan. However, a causal relationship has not been established.

Post Marketing Experience

Metoprolol

The following adverse reactions have been reported during post-approval use of metoprolol: confusional state, an increase in blood triglycerides and a decrease in high density lipoprotein (HDL). Because these reports are from a population of uncertain size and are subject to confounding factors, it is not possible to reliably estimate their frequency.

Telmisartan

The adverse reactions listed have been accumulated from controlled clinical trials in patients treated for hypertension and from post-marketing reports. The listing also takes into account serious adverse reactions and adverse reactions leading to discontinuation reported in three clinical long-term studies including 21,642 patients treated with telmisartan for the reduction of cardiovascular morbidity for up to six years.

Reporting of suspected adverse reactions

If you get any side effects, talk to your doctor, pharmacist or nurse. This includes any possible side effects not listed in this leaflet. You can also report side effects directly via any point of contact of Torrent Pharma available at: https://torrentpharma.com/index.php/site/info/adverse_event_reporting By reporting side effects, you can help provide more information on the safety of this medicine

4.9 Overdose

Metoprolol

Poisoning due to an overdose of metoprolol may lead to severe hypotension, sinus bradycardia, atrioventricular block, heart failure, cardiogenic shock, cardiac arrest, bronchospasm, impairment of consciousness, coma, nausea, vomiting, cyanosis, hypoglycaemia and, occasionally, hyperkalaemia. The first manifestations usually appear 20 minutes to two hours after drug ingestion.

After ingestion of an overdose or in case of hypersensitivity, the patient should be kept under close supervision and be treated in an intensive-care ward. Absorption of any drug material still present in the gastrointestinal tract can be prevented by induction of vomiting, gastric lavage, administration of activated charcoal and a laxative. Artificial respiration may be required.

Bradycardia or extensive vagal reactions should be treated by administering atropine or methyl atropine. Hypotension and shock should be treated with plasma/plasma substitutes and, if necessary, catecholamines. The beta-blocking effect can be counteracted by slow intravenous administration of isoprenaline hydrochloride, starting with a dose of approximately 5 micrograms/minute, or dobutamine, starting with a dose of

2.5micrograms/minute, until required effect has been obtained. In refractory cases isoprenaline can be combined with dopamine. If this does not produce the desired effect either, intravenous administration of 8-10mg glucagon may be considered. If required the injection should be repeated within one hour, to be followed – if required – by an i.v. infusion of glucagon at an administration rate of 1-3mg/hour. Administration of calcium ions, or the use of a cardiac pacemaker may also be considered. In patients intoxicated with hydrophilic beta-blocking agents haemodialysis or Haemoperfusion may be considered.

Amlodipine

In humans experience with intentional overdose is limited.

Symptoms

Available data suggest that gross overdosage could result in excessive peripheral vasodilatation and possibly reflex tachycardia. Marked and probably prolonged systemic hypotension up to and including shock with fatal outcome have been reported.

Treatment

Clinically significant hypotension due to amlodipine overdosage calls for active cardiovascular support including frequent monitoring of cardiac and respiratory function, elevation of extremities and attention to circulating fluid volume and urine output.

A vasoconstrictor may be helpful in restoring vascular tone and blood pressure, provided that there is no contraindication to its use. Intravenous calcium gluconate may be beneficial in reversing the effects of calcium channel blockade.

Gastric lavage may be worthwhile in some cases. In healthy volunteers the use of charcoal up to 2 hours after administration of amlodipine 10 mg has been shown to reduce the absorption rate of amlodipine.

Since amlodipine is highly protein-bound, dialysis is not likely to be of benefit.

Telmisartan

There is limited information available with regard to overdose in humans.

Symptoms

The most prominent manifestations of telmisartan overdose were hypotension and tachycardia; bradycardia dizziness, increase in serum creatinine, and acute renal failure have also been reported.

Management

Telmisartan is not removed by haemodialysis. The patient should be closely monitored, and the treatment should be symptomatic and supportive. Management depends on the time since ingestion and the severity of the symptoms. Suggested measures include induction of emesis and / or gastric lavage. Activated charcoal may be useful in the treatment of overdosage. Serum electrolytes and creatinine should be monitored frequently. If hypotension occurs, the patient should be placed in a supine position, with salt and volume replacement given quickly.

5. Pharmacological properties

5.1 Mechanism of action

Metoprolol

Pharmacotherapeutic category: Beta blocking agents, selective, ATC code: C07AB02
Metoprolol is a cardioselective beta-adrenergic blocking agent. It has a relatively greater blocking effect on beta₁-receptors (i.e. those mediating adrenergic stimulation of heart rate and contractility and release of free fatty acids from fat stores) than on beta₂-receptors, which are chiefly involved in broncho and vasodilation.

Amlodipine

Pharmacotherapeutic group: Calcium channel blockers, selective calcium channel blockers with mainly vascular effects. ATC Code: C08CA01.

Amlodipine is a calcium ion influx inhibitor of the dihydropyridine group (slow channel blocker or calcium ion antagonist) and inhibits the transmembrane influx of calcium ions into cardiac and vascular smooth muscle.

The mechanism of the antihypertensive action of amlodipine is due to a direct relaxant effect on vascular smooth muscle. The precise mechanism by which amlodipine relieves angina has not been fully determined but amlodipine reduces total ischaemic burden by the following two actions.

- 1) Amlodipine dilates peripheral arterioles and thus, reduces the total peripheral resistance (afterload) against which the heart works. Since the heart rate remains stable, this unloading of the heart reduces myocardial energy consumption and oxygen requirements.
- 2) The mechanism of action of amlodipine also probably involves dilatation of the main coronary arteries and coronary arterioles, both in normal and ischaemic regions. This dilatation increases myocardial oxygen delivery in patients with coronary artery spasm (Prinzmetal's or variant angina).

Telmisartan

Telmisartan is an orally active and specific angiotensin II receptor (type AT₁) antagonist. Telmisartan displaces angiotensin II with very high affinity from its binding site at the AT₁ receptor subtype, which is responsible for the known actions of angiotensin II. Telmisartan does not exhibit any partial agonist activity at the AT₁ receptor. Telmisartan selectively binds the AT₁ receptor. The binding is long-lasting. Telmisartan does not show affinity for other receptors, including AT₂ and other less characterised AT receptors. The functional role of these receptors is not known, nor is the effect of their possible overstimulation by angiotensin II, whose levels are increased by telmisartan. Plasma aldosterone levels are decreased by telmisartan. Telmisartan does not inhibit human plasma renin or block ion channels. Telmisartan does not inhibit angiotensin converting enzyme (kininase II), the enzyme which also degrades bradykinin. Therefore it is not expected to potentiate bradykinin-mediated adverse effects.

5.2 Pharmacodynamic properties

Metoprolol

Metoprolol is a cardioselective beta-adrenergic blocking agent. It has a relatively greater blocking effect on beta₁-receptors (ie those mediating adrenergic stimulation of heart rate and contractility and release of free fatty acids from fat stores) than on beta₂-receptors, which are chiefly involved in broncho and vasodilation.

Amlodipine

In patients with hypertension, once daily dosing provides clinically significant reductions of blood pressure in both the supine and standing positions throughout the 24 hour interval. Due to the slow onset of action, acute hypotension is not a feature of amlodipine administration.

In patients with angina, once daily administration of amlodipine increases total exercise time, time to angina onset, and time to 1 mm ST segment depression, and decreases both angina attack frequency and glyceryl trinitrate tablet consumption.

Amlodipine has not been associated with any adverse metabolic effects or changes in plasma lipids and is suitable for use in patients with asthma, diabetes, and gout.

Use in patients with coronary artery disease (CAD)

The effectiveness of amlodipine in preventing clinical events in patients with coronary artery disease (CAD) has been evaluated in an independent, multi-centre, randomized, double-blind, placebo-controlled study of 1997 patients; Comparison of Amlodipine vs. Enalapril to Limit Occurrences of Thrombosis (CAMELOT). Of these patients, 663 were treated with amlodipine 5-10 mg, 673 patients were treated with enalapril 10-20 mg, and 655 patients were treated with placebo, in addition to standard care of statins, beta-blockers, diuretics and aspirin, for 2 years. The key efficacy results are presented in Table 1. The results indicate that amlodipine treatment was associated with fewer hospitalizations for angina and revascularization procedures in patients with CAD.

Table 1. Incidence of significant clinical outcomes for CAMELOT					
Outcomes	<u>Cardiovascular event rates,</u>			<u>Amlodipine vs. Placebo</u>	
	No. (%)			Hazard Ratio (95% CI)	P Value
<u>Primary Endpoint</u>					
Adverse cardiovascular events	110 (16.6)	151 (23.1)	136 (20.2)	0.69 (0.54-0.88)	.003
<u>Individual Components</u>					

Coronary revascularization	78 (11.8)	103 (15.7)	95 (14.1)	0.73 (0.54-0.98)	.03
Hospitalization for angina	51 (7.7)	84 (12.8)	86 (12.8)	0.58 (0.41-0.82)	.002
Nonfatal MI	14 (2.1)	19 (2.9)	11 (1.6)	0.73 (0.37-1.46)	.37
Stroke or TIA	6 (0.9)	12 (1.8)	8 (1.2)	0.50 (0.19-1.32)	.15
Cardiovascular death	5 (0.8)	2 (0.3)	5 (0.7)	2.46 (0.48-12.7)	.27
Hospitalization for CHF	3 (0.5)	5 (0.8)	4 (0.6)	0.59 (0.14-2.47)	.46
Resuscitated cardiac arrest	0	4 (0.6)	1 (0.1)	NA	.04
New-onset peripheral vascular disease	5 (0.8)	2 (0.3)	8 (1.2)	2.6 (0.50-13.4)	.24

Abbreviations: CHF, congestive heart failure; CI, confidence interval; MI, myocardial infarction; TIA, transient ischemic attack.

Use in patients with heart failure

Haemodynamic studies and exercise based controlled clinical trials in NYHA Class II-IV heart failure patients have shown that Amlodipine did not lead to clinical deterioration as measured by exercise tolerance, left ventricular ejection fraction and clinical symptomatology.

A placebo controlled study (PRAISE) designed to evaluate patients in NYHA Class III-IV heart failure receiving digoxin, diuretics and ACE inhibitors has shown that Amlodipine did not lead to an increase in risk of mortality or combined mortality and morbidity with heart failure.

In a follow-up, long term, placebo controlled study (PRAISE-2) of Amlodipine in patients with NYHA III and IV heart failure without clinical symptoms or objective findings suggestive or underlying ischaemic disease, on stable doses of ACE inhibitors, digitalis, and diuretics, Amlodipine had no effect on total cardiovascular mortality. In this same population Amlodipine was associated with increased reports of pulmonary oedema.

Treatment to prevent heart attack trial (ALLHAT)

A randomised double-blind morbidity-mortality study called the Antihypertensive and Lipid-Lowering Treatment to Prevent Heart Attack Trial (ALLHAT) was performed to compare

newer drug therapies: amlodipine 2.5-10 mg/d (calcium channel blocker) or lisinopril 10-40 mg/d (ACE-inhibitor) as first-line therapies to that of the thiazide-diuretic, chlorthalidone 12.5-25 mg/d in mild to moderate hypertension.

A total of 33,357 hypertensive patients aged 55 or older were randomised and followed for a mean of 4.9 years. The patients had at least one additional CHD risk factor, including: previous myocardial infarction or stroke (> 6 months prior to enrolment) or documentation of other atherosclerotic CVD (overall 51.5%), type 2 diabetes (36.1%), HDL-C < 35 mg/dL (11.6%), left ventricular hypertrophy diagnosed by electrocardiogram or echocardiography (20.9%), current cigarette smoking (21.9%).

The primary endpoint was a composite of fatal CHD or non-fatal myocardial infarction. There was no significant difference in the primary endpoint between amlodipine-based therapy and chlorthalidone-based therapy: RR 0.98 95% CI (0.90-1.07) p=0.65. Among secondary endpoints, the incidence of heart failure (component of a composite combined cardiovascular endpoint) was significantly higher in the amlodipine group as compared to the chlorthalidone group (10.2% vs. 7.7%, RR 1.38, 95% CI [1.25-1.52] p<0.001). However, there was no significant difference in all-cause mortality between amlodipine-based therapy and chlorthalidone-based therapy. RR 0.96 95% CI [0.89-1.02] p=0.20.

Use in children (aged 6 years and older)

In a study involving 268 children aged 6-17 years with predominantly secondary hypertension, comparison of a 2.5 mg dose, and 5.0 mg dose of amlodipine with placebo, showed that both doses reduced Systolic Blood Pressure significantly more than placebo. The difference between the two doses was not statistically significant.

The long-term effects of amlodipine on growth, puberty and general development have not been studied. The long-term efficacy of amlodipine on therapy in childhood to reduce cardiovascular morbidity and mortality in adulthood has also not been established.

Telmisartan

Clinical efficacy and safety

Treatment of essential hypertension

After the first dose of telmisartan, the antihypertensive activity gradually becomes evident within 3 hours. The maximum reduction in blood pressure is generally attained 4 to 8 weeks after the start of treatment and is sustained during long-term therapy.

The antihypertensive effect persists constantly over 24 hours after dosing and includes the last 4 hours before the next dose as shown by ambulatory blood pressure measurements. This is confirmed by trough to peak ratios consistently above 80 % seen after doses of 40 and 80 mg of telmisartan in placebo controlled clinical studies. There is an apparent trend to a dose relationship to a time to recovery of baseline systolic blood pressure (SBP). In this respect data concerning diastolic blood pressure (DBP) are inconsistent.

In patients with hypertension telmisartan reduces both systolic and diastolic blood pressure without affecting pulse rate. The contribution of the medicinal product's diuretic and

natriuretic effect to its hypotensive activity has still to be defined. The antihypertensive efficacy of telmisartan is comparable to that of agents representative of other classes of antihypertensive medicinal products (demonstrated in clinical trials comparing telmisartan to amlodipine, atenolol, enalapril, hydrochlorothiazide, and lisinopril).

Upon abrupt cessation of treatment with telmisartan, blood pressure gradually returns to pre-treatment values over a period of several days without evidence of rebound hypertension.

The incidence of dry cough was significantly lower in patients treated with telmisartan than in those given angiotensin converting enzyme inhibitors in clinical trials directly comparing the two antihypertensive treatments.

Cardiovascular prevention

ONTARGET (ONgoing Telmisartan Alone and in Combination with Ramipril Global Endpoint Trial) compared the effects of telmisartan, ramipril and the combination of telmisartan and ramipril on cardiovascular outcomes in 25620 patients aged 55 years or older with a history of coronary artery disease, stroke, TIA, peripheral arterial disease, or type 2 diabetes mellitus accompanied by evidence of end-organ damage (e.g. retinopathy, left ventricular hypertrophy, macro- or microalbuminuria), which is a population at risk for cardiovascular events.

Patients were randomized to one of the three following treatment groups: telmisartan 80 mg (n = 8542), ramipril 10 mg (n = 8576), or the combination of telmisartan 80 mg plus ramipril 10 mg (n = 8502), and followed for a mean observation time of 4.5 years.

Telmisartan showed a similar effect to ramipril in reducing the primary composite endpoint of cardiovascular death, non-fatal myocardial infarction, non-fatal stroke, or hospitalization for congestive heart failure. The incidence of the primary endpoint was similar in the telmisartan (16.7 %) and ramipril (16.5 %) groups. The hazard ratio for telmisartan vs. ramipril was 1.01 (97.5 % CI 0.93 - 1.10, p (non-inferiority) = 0.0019 at a margin of 1.13). The all-cause mortality rate was 11.6 % and 11.8 % among telmisartan and ramipril treated patients, respectively.

Telmisartan was found to be similarly effective to ramipril in the pre-specified secondary endpoint of cardiovascular death, non-fatal myocardial infarction, and nonfatal stroke [0.99 (97.5 % CI 0.90 - 1.08), p (non-inferiority) = 0.0004], the primary endpoint in the reference study HOPE (The **H**eart **O**utcomes **P**revention **E**valuation Study), which had investigated the effect of ramipril vs. placebo.

TRANSCEND randomized ACE-I intolerant patients with otherwise similar inclusion criteria as ONTARGET to telmisartan 80 mg (n=2954) or placebo (n=2972), both given on top of standard care. The mean duration of follow up was 4 years and 8 months. No statistically significant difference in the incidence of the primary composite endpoint (cardiovascular death, non-fatal myocardial infarction, non-fatal stroke, or hospitalization for congestive heart failure) was found [15.7 % in the telmisartan and 17.0 % in the placebo groups with a hazard ratio of 0.92 (95 % CI 0.81 - 1.05, p = 0.22)]. There was evidence for a benefit of telmisartan compared to placebo in the pre-specified secondary composite endpoint of cardiovascular death, non-fatal myocardial infarction, and non-fatal stroke [0.87 (95 % CI 0.76 - 1.00, p =

0.048)]. There was no evidence for benefit on cardiovascular mortality (hazard ratio 1.03, 95 % CI 0.85 - 1.24).

Cough and angioedema were less frequently reported in patients treated with telmisartan than in patients treated with ramipril, whereas hypotension was more frequently reported with telmisartan.

Combining telmisartan with ramipril did not add further benefit over ramipril or telmisartan alone. CV mortality and all-cause mortality were numerically higher with the combination. In addition, there was a significantly higher incidence of hyperkalaemia, renal failure, hypotension and syncope in the combination arm. Therefore the use of a combination of telmisartan and ramipril is not recommended in this population.

In the "Prevention Regimen For Effectively avoiding Second Strokes" (PRoFESS) trial in patients 50 years and older, who recently experienced stroke, an increased incidence of sepsis was noted for telmisartan compared with placebo, 0.70 % vs. 0.49 % [RR 1.43 (95 % confidence interval 1.00 - 2.06)]; the incidence of fatal sepsis cases was increased for patients taking telmisartan (0.33 %) vs. patients taking placebo (0.16 %) [RR 2.07 (95 % confidence interval 1.14 - 3.76)]. The observed increased occurrence rate of sepsis associated with the use of telmisartan may be either a chance finding or related to a mechanism not currently known.

Two large randomised, controlled trials (ONTARGET (ONgoing Telmisartan Alone and in combination with Ramipril Global Endpoint Trial) and VA NEPHRON-D (The Veterans Affairs Nephropathy in Diabetes)) have examined the use of the combination of an ACE-inhibitor with an angiotensin II receptor blocker.

ONTARGET was a study conducted in patients with a history of cardiovascular or cerebrovascular disease, or type 2 diabetes mellitus accompanied by evidence of endorgan damage.

“Cardiovascular prevention”. VA NEPHRON-D was a study in patients with type 2 diabetes mellitus and diabetic nephropathy. These studies have shown no significant beneficial effect on renal and/or cardiovascular outcomes and mortality, while an increased risk of hyperkalaemia, acute kidney injury and/or hypotension as compared to monotherapy was observed. Given their similar pharmacodynamic properties, these results are also relevant for other ACE-inhibitors and angiotensin II receptor blockers. ACE-inhibitors and angiotensin II receptor blockers should therefore not be used concomitantly in patients with diabetic nephropathy.

ALTITUDE (Aliskiren Trial in Type 2 Diabetes Using Cardiovascular and Renal Disease Endpoints) was a study designed to test the benefit of adding aliskiren to a standard therapy of an ACE-inhibitor or an angiotensin II receptor blocker in patients with type 2 diabetes mellitus and chronic kidney disease, cardiovascular disease, or both. The study was terminated early because of an increased risk of adverse outcomes. Cardiovascular death and stroke were both numerically more frequent in the aliskiren group than in the placebo group and adverse events and serious adverse events of interest (hyperkalaemia, hypotension and

renal dysfunction) were more frequently reported in the aliskiren group than in the placebo group.

Paediatric population

The safety and efficacy of Telmisartan in children and adolescents aged below 18 years have not been established.

The blood pressure lowering effects of two doses of telmisartan were assessed in 76 hypertensive, largely overweight patients aged 6 to < 18 years (body weight \geq 20 kg and \leq 120 kg, mean 74.6 kg), after taking telmisartan 1 mg/kg (n = 29 treated) or 2 mg/kg (n = 31 treated) over a four-week treatment period. By inclusion the presence of secondary hypertension was not investigated. In some of the investigated patients the doses used were higher than those recommended in the treatment of hypertension in the adult population, reaching a daily dose comparable to 160 mg, which was tested in adults. After adjustment for age group effects mean SBP changes from baseline (primary objective) were -14.5 (1.7) mm Hg in the telmisartan 2 mg/kg group, -9.7 (1.7) mm Hg in the telmisartan 1 mg/kg group, and -6.0 (2.4) in the placebo group. The adjusted DBP changes from baseline were -8.4 (1.5) mm Hg, -4.5 (1.6) mm Hg and -3.5 (2.1) mm Hg respectively. The change was dose dependent. The safety data from this study in patients aged 6 to < 18 years appeared generally similar to that observed in adults. The safety of long term treatment of telmisartan in children and adolescents was not evaluated.

An increase in eosinophils reported in this patient population has not been recorded in adults. Its clinical significance and relevance is unknown. These clinical data do not allow to make conclusions on the efficacy and safety of telmisartan in hypertensive paediatric population.

5.3 Pharmacokinetic properties

Metoprolol

Absorption

Metoprolol is readily and completely absorbed from the gastrointestinal tract. Metoprolol is absorbed fully after oral administration. Within the therapeutic dosage range, the plasma concentrations increase in a linear manner in relation to dosage. Peak plasma levels are achieved after approx. 1.5–2 hours. Even though the plasma profile displays a broader interindividual variability, this appears to be easily reproducible on an individual basis. Due to the extensive first-pass effect, bioavailability after a single oral dose is approx. 50%. After repeated administration, the systemic availability of the dose increases to approx. 70%. After oral intake with food, the systemic availability of an oral dose increases by [SIC] approx. 30–40%.

Distribution

Peak plasma concentrations occur about 1½ hours after a single oral dose. Peak plasma metoprolol concentrations at steady state with usual doses have been reported as 20-340ng/ml. Metoprolol is widely distributed, it crosses the blood brain barrier, the placenta. It is slightly bound to plasma protein. The medicinal product is approx. 5–10% bound to plasma proteins.

Biotransformation

Metoprolol is metabolised through oxidation in the liver mainly by the CYP2D6 isoenzyme. Even though three main metabolites have been identified, none of them has a clinically significant beta-blocking effect. Generally, 95% of an oral dose is found in the urine. Only 5% of the dose is excreted unmodified via the kidneys; in isolated cases, this figure can reach as high as 30%. The elimination half-life of metoprolol averages 3.5 hours (with extremes of 1 and 9 hours). Total clearance is approx. 1 litre/minute. It is extensively metabolised in the liver; O-dealkylation followed by oxidation and aliphatic hydroxylation. The rate of hydroxylation to alpha-hydroxymetoprolol is reported to be determined by genetic polymorphism; The half-life of metoprolol in fast hydroxylators is stated to be 3-4 hours, whereas in poor hydroxylators it is about 7 hours.

Elimination

The metabolites are excreted in the urine together with only small amounts of unchanged metoprolol. Metoprolol is excreted in breast milk.

Special population

Elderly

In comparison with administration to younger patients, the pharmacokinetics of metoprolol when administered to older patients shows no significant differences.

Renal impairment

Renal dysfunction has barely any effect on the bioavailability of metoprolol. However, the excretion of metabolites is reduced. In patients with a glomerular filtration rate of less than 5 ml/minute, a significant accumulation of metabolites has been observed. This accumulation of metabolites, however, produces no increase in the beta blockade.

Hepatic impairment

The pharmacokinetics of metoprolol are influenced only minimally by reduced hepatic function. However, in patients with serious hepatic cirrhosis and a portacaval shunt, the bioavailability of metoprolol can increase, and the total clearance can be reduced. Patients with portacaval anastomosis had a total clearance of approx. 0.3 litres/minute and AUC values that were 6 times higher than those found in healthy persons.

Severe angina pectoris

Intrinsic sympathomimetic activity (ISA) may be a disadvantage for the patient with severe angina pectoris. There are however no indications that the efficacy in hypertensives is influenced by this characteristic. In exceptional cases, however, very high dosages can cause the ISA to predominate over the beta-adrenergic blocking capacity so that restriction of the maximum dosage is indicated.

Respiratory impairment

It has not been proven that beta-blockers with ISA give a lower risk for bronchospasm or enhancement of pre-existing bronchospastic complaints.

Amlodipine

Absorption, distribution, plasma protein binding: After oral administration of therapeutic doses, amlodipine is well absorbed with peak blood levels between 6-12 hours post dose. Absolute bioavailability has been estimated to be between 64 and 80%. The volume of distribution is approximately 21 l/kg. *In vitro* studies have shown that approximately 97.5% of circulating amlodipine is bound to plasma proteins.

The bioavailability of amlodipine is not affected by food intake.

Biotransformation/elimination

The terminal plasma elimination half-life is about 35-50 hours and is consistent with once daily dosing. Amlodipine is extensively metabolised by the liver to inactive metabolites with 10% of the parent compound and 60% of metabolites excreted in the urine.

Special population

Hepatic impairment

Very limited clinical data are available regarding amlodipine administration in patients with hepatic impairment. Patients with hepatic insufficiency have decreased clearance of amlodipine resulting in a longer half-life and an increase in AUC of approximately 40-60%.

Elderly population

The time to reach peak plasma concentrations of amlodipine is similar in elderly and younger subjects. Amlodipine clearance tends to be decreased with resulting increases in AUC and elimination half-life in elderly patients. Increases in AUC and elimination half-life in patients with congestive heart failure were as expected for the patient age group studied.

Paediatric population

A population PK study has been conducted in 74 hypertensive children aged from 1 to 17 years (with 34 patients aged 6 to 12 years and 28 patients aged 13 to 17 years) receiving amlodipine between 1.25 and 20 mg given either once or twice daily. In children 6 to 12 years and in adolescents 13-17 years of age the typical oral clearance (CL/F) was 22.5 and 27.4 L/hr respectively in males and 16.4 and 21.3 L/hr respectively in females. Large variability in exposure between individuals was observed. Data reported in children below 6 years is limited.

Telmisartan

Absorption

Absorption of telmisartan is rapid although the amount absorbed varies. The mean absolute bioavailability for telmisartan is about 50 %. When telmisartan is taken with food, the reduction in the area under the plasma concentration-time curve (AUC_{0-∞}) of telmisartan varies from approximately 6 % (40 mg dose) to approximately 19 % (160 mg dose). By 3 hours after administration, plasma concentrations are similar whether telmisartan is taken fasting or with food.

Linearity/non-linearity

The small reduction in AUC is not expected to cause a reduction in the therapeutic efficacy. There is no linear relationship between doses and plasma levels. C_{max} and to a lesser extent AUC increase disproportionately at doses above 40 mg.

Distribution

Telmisartan is largely bound to plasma protein (>99.5 %), mainly albumin and alpha-1 acid glycoprotein. The mean steady state apparent volume of distribution (V_{dss}) is approximately 500 l.

Biotransformation

Telmisartan is metabolised by conjugation to the glucuronide of the parent compound. No pharmacological activity has been shown for the conjugate.

Elimination

Telmisartan is characterised by biexponential decay pharmacokinetics with a terminal elimination half-life of >20 hours. The maximum plasma concentration (C_{max}) and, to a smaller extent, the area under the plasma concentration-time curve (AUC), increase disproportionately with dose. There is no evidence of clinically relevant accumulation of telmisartan taken at the recommended dose. Plasma concentrations were higher in females than in males, without relevant influence on efficacy.

After oral (and intravenous) administration, telmisartan is nearly exclusively excreted with the faeces, mainly as unchanged compound. Cumulative urinary excretion is <1 % of dose. Total plasma clearance (Cl_{tot}) is high (approximately 1,000 ml/min) compared with hepatic blood flow (about 1,500 ml/min).

Paediatric population

The pharmacokinetics of two doses of telmisartan were assessed as a secondary objective in hypertensive patients (n = 57) aged 6 to < 18 years after taking telmisartan 1 mg/kg or 2 mg/kg over a four-week treatment period. Pharmacokinetic objectives included the determination of the steady-state of telmisartan in children and adolescents, and investigation of age related differences. Although the study was too small for a meaningful assessment of the pharmacokinetics of children under 12 years of age, the results are generally consistent with the findings in adults and confirm the non-linearity of telmisartan, particularly for C_{max}.

Gender

Differences in plasma concentrations were observed, with C_{max} and AUC being approximately 3- and 2-fold higher, respectively, in females compared to males.

Elderly

The pharmacokinetics of telmisartan do not differ between the elderly and those younger than 65 years.

Renal impairment

In patients with mild to moderate and severe renal impairment, doubling of plasma concentrations was observed. However, lower plasma concentrations were observed in patients with renal insufficiency undergoing dialysis. Telmisartan is highly bound to plasma protein in renal-insufficient patients and cannot be removed by dialysis. The elimination half-life is not changed in patients with renal impairment.

Hepatic impairment

Pharmacokinetic studies in patients with hepatic impairment showed an increase in absolute bioavailability up to nearly 100 %. The elimination half-life is not changed in patients with hepatic impairment.

6. Nonclinical properties

6.1 Animal Toxicology or Pharmacology

Metoprolol

There are no preclinical data of relevance to the prescriber.

Amlodipine

Reproductive toxicology

Reproductive studies in rats and mice have shown delayed date of delivery, prolonged duration of labour and decreased pup survival at dosages approximately 50 times greater than the maximum recommended dosage for humans based on mg/kg.

Impairment of fertility

There was no effect on the fertility of rats treated with amlodipine (males for 64 days and females 14 days prior to mating) at doses up to 10 mg/kg/day (8 times* the maximum recommended human dose of 10 mg on a mg/m² basis). In another rat study in which male rats were treated with amlodipine besilate for 30 days at a dose comparable with the human dose based on mg/kg, decreased plasma follicle-stimulating hormone and testosterone were found as well as decreases in sperm density and in the number of mature spermatids and Sertoli cells.

Carcinogenesis, mutagenesis

Rats and mice treated with amlodipine in the diet for two years, at concentrations calculated to provide daily dosage levels of 0.5, 1.25, and 2.5 mg/kg/day showed no evidence of carcinogenicity. The highest dose (for mice, similar to, and for rats twice* the maximum recommended clinical dose of 10 mg on a mg/m² basis) was close to the maximum tolerated dose for mice but not for rats.

Mutagenicity studies revealed no drug related effects at either the gene or chromosome levels.

*Based on patient weight of 50 kg

Telmisartan

In preclinical safety studies, doses producing exposure comparable to that in the clinical therapeutic range caused reduced red cell parameters (erythrocytes, haemoglobin,

haematocrit), changes in renal haemodynamics (increased blood urea nitrogen and creatinine), as well as increased serum potassium in normotensive animals. In dogs, renal tubular dilation and atrophy were observed. Gastric mucosal injury (erosion, ulcers or inflammation) also was noted in rats and dogs. These pharmacologically-mediated undesirable effects, known from preclinical studies with both angiotensin converting enzyme inhibitors and angiotensin II receptor antagonists, were prevented by oral saline supplementation.

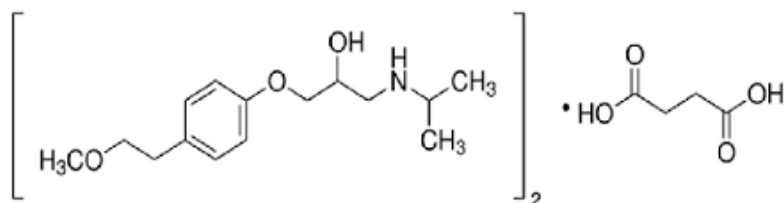
In both species, increased plasma renin activity and hypertrophy/hyperplasia of the renal juxtaglomerular cells were observed. These changes, also a class effect of angiotensin converting enzyme inhibitors and other angiotensin II receptor antagonists, do not appear to have clinical significance.

No clear evidence of a teratogenic effect was observed, however at toxic dose levels of telmisartan an effect on the postnatal development of the off springs such as lower body weight and delayed eye opening was observed. There was no evidence of mutagenicity and relevant clastogenic activity in *in vitro* studies and no evidence of carcinogenicity in rats and mice.

7. Description

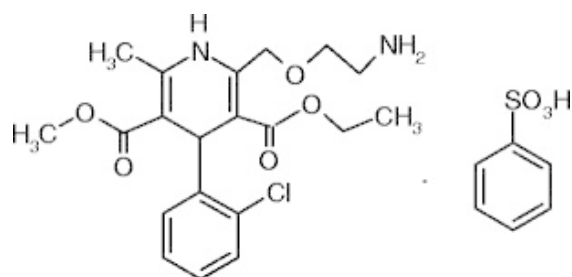
Metoprolol Succinate:

Metoprolol Succinate is (RS)-1-(Isopropylamino)-3-[4-(2-methoxyethyl)phenoxy]propan-2-ol succinate. The empirical formula is $(C_{15}H_{25}NO_3)_2 \cdot C_4H_6O_4$ and its molecular weight is 652.8 g/mol. The structural formula is:



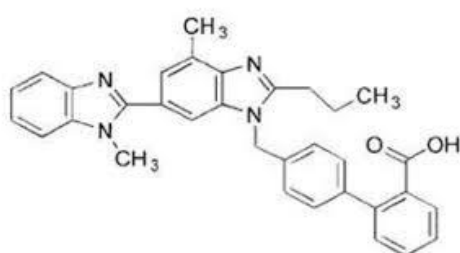
Amlodipine Besilate:

Amlodipine Besilate is 3-ethyl 5-methyl (4RS)-2-[2-aminoethoxy) methyl]-4-(2-chlorophenyl)-6-methyl-1,4-dihydropyridine-3,5-dicarboxylate benzene sulphonate. The empirical formula is $C_{26}H_{31}ClN_2O_8S$ and molecular weight is 567.1 g/mol. The structural formula is:



Telmisartan:

Telmisartan is 4'-{[4-methyl-6-(1-methyl-1H-benzimidazol-2-yl)-2-propyl-1H-benzimidazol-1-yl]methyl}-2-biphenyl-carboxylic acid. The empirical formula is 514.6 g/mol. The structural formula is:



METOCARD AMT 50

Metoprolol (ER), Amlodipine and Telmisartan are Reddish brown coloured, round, biconvex, both side plain and film coated bilayered tablets. The excipients used are Microcrystalline Cellulose, Iron Oxide Yellow, Iron Oxide Red, Dibasic Calcium Phosphate, Sodium Starch Glycolate, Polyvinyl Pyrrolidone, Colloidal Silicon Dioxide, Magnesium Stearate, Metoprolol Succinate, Xanthan Gum, Methocel K 100 M, Hydroxy Propyl Cellulose, Isopropyl Alcohol, Sodium Stearyl Fumarate, Akoat 512.

8. Pharmaceutical particulars

8.1 Incompatibilities

Not Available

8.2 Shelf-life

Do not use later than the date of expiry.

8.3 Packaging information

METOCARD AMT 50 is available in pack of 10 Tablets.

8.4 Storage and handing instructions

Store Protected from light & Moisture, at a temperature not exceeding 30⁰C.

Keep out of reach of children.

9. Patient counselling information

Ask the patients to inform the treating physicians in case of any of the below:

- Have any allergies
- Have kidney or liver problems
- Are pregnant or plan to become pregnant
- Are breastfeeding or plan to breastfeed
- Have any serious illness
- Are taking any medicines (prescription, over-the-counter, vitamins, or herbal products)

10. Details of manufacturer

Akums Drugs & Pharmaceuticals Ltd.
Plot No. 19, 20 & 21, Sector-6A,
I.I.E., SIDCUL, Ranipur,
Haridwar- 249 403, Uttarakhand.

11. Details of permission or licence number with date

Mfg Licence .No. 10/UA/2004 Issued on.: 29.04.2024

12. Date of revision

NA

13. MARKETED BY



TORRENT PHARMACEUTICALS LTD.

IN/METOCARD AMT (50+ 5+40 mg)/JUL 24/01/PI